

HAIR
COLLECTION



SEMIDA

Hair Design



NEW MIRELLE ★



- 1B
- 4/6
- L8
- 10/16/27+10
- 20/25-14
- LR14/88H+8
- L16/25
- 23/22+14
- N30/33
- 30/130/2
- 33/29/28+33



LORA
★★★

- 1B
- 4/6
- 6/8
- 10/16/27+10
- 20/25-14
- L16/25
- LR14/88H+8
- L22+4
- 30/130+4
- 33/FIRE/131



ZUZA



- 1B
- 4
- 6
- 6/8
- 8/27-6

- 12
- 8/27/26+8
- 10/16/27+10
- 12/26T
- 20/25-14
- LR14/88H+8

- L16/25
- 20/22
- L22+4
- 23/22+14
- GMS101
- 33/130/2

- NT33/FIRE/131
- 30/130+4
- 38
- 44 (SALT PEPPER)
- 17/101
- 51/60
- 305K
- 60

ANNA
★



- 1B
- 6
- 6/8
- 8/27-6
- 12
- 12/26/27
- 8/27/26+8
- 10/16/27+10
- 12/26T
- 20/25-14
- LR14/88H+8
- L22+4
- 20/22
- 16/25
- GMS101
- 30/130+4
- 33/fire/131
- 131-131V FLAME AUBERGINE
- 33/130/2
- 38
- Salt Pepper
- 17/101
- 51/60
- 305K

NEW FINESSE



• 4/6/30

• 20/25-14

• 22/16+14

• 305K

• 8/27/26+8

• LR14/88H+8

• 23/1001/14+14

LIZZY



- 1B
- 4/6
- 27/4-4
- 8/27-6
- 6/8
- 12
- 10/16/27+10
- 8/27/26+8
- 12/26/27
- 12/14/23+12
- 14/26
- 20/25-14
- LR14/88H+8
- L16/25
- 26/25
- L22+4
- 23/22+14
- GMS101
- red hot cooper
- orange red
- 33/fire/131
- 33/29/28+33
- 131/v-2-2
- 133-131V flame aubergine
- 33/130/2
- salt & pepper
- 305K
- 60

CLASSIC JOY



- 1B
- 4/6
- L8
- L12
- 10/16/27+10
- 8/27/26+8
- 20/25-14
- L16/25
- LR14/88H+8
- 14/23+14
- 22/16+14
- LG130+8
- 23/1001

MONZA II



- 1B
- 6
- 27/4-4
- 8/27-6
- 10/16/27+10
- 20/25-14
- LR14/88H+8
- Darksand rooted
- 14/88
- L22+4
- 23/26+12
- 1001/22-20+14
- 130/29-30
- 33/fire/131

MERCEDES



- 1B
- 8-10H
- 20/25-14
- 23/22+14
- 33/29/28+33
- 4/6
- 10/16/27+10
- L16/25
- 14/23+14
- LG130+8
- 27/4-4
- 4/29/25+8
- LR14/88H+8
- 33C/135

LENA





SARA

ELIZA



WERA



IGA





CELESTYNA



SEMIDA

Hair Design



KOSMETYKI I AKCESORIA



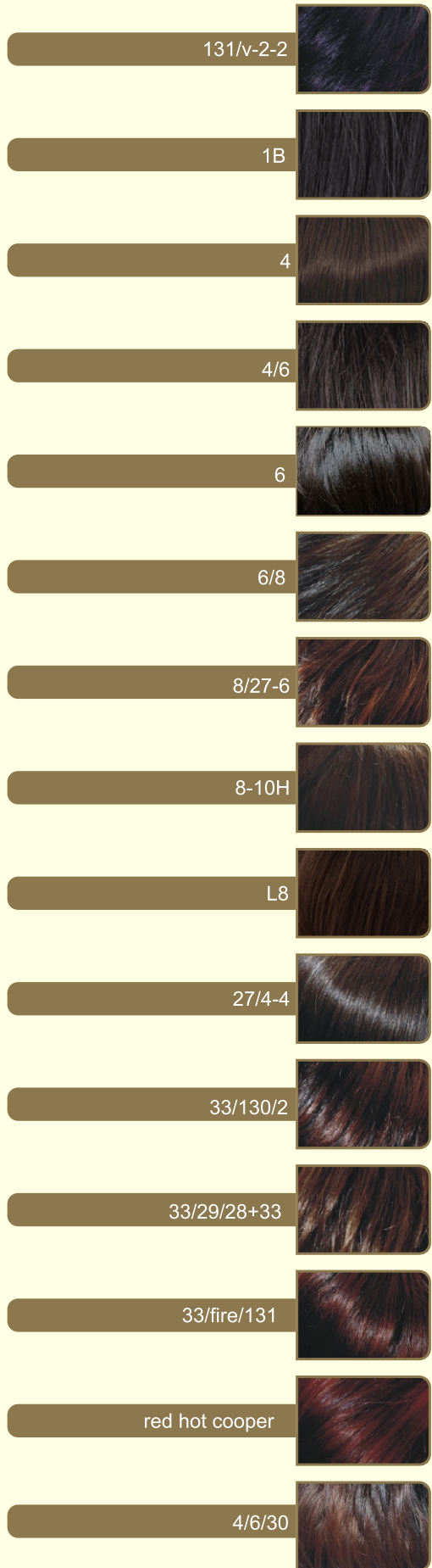
LEGENDA

dotycząca wykonania peruk:

- * maszynowa
- ** ręczna
- *** przedziałek

60	
23/1001/14+14	
51/60	
305K	
14/23+14	
22/16+14	
23/26+12	
23/22+14	
17/101	
L22+4	
44	
salt & pepper	

23/1001	
1001/22-20+14	
14/88	
14/26	
L16/25	
20/25-14	
26/25	
30/130+4	
orange red	
131-131V FLAME AUBERGINE	
N30/33	
130/29-30	
LG130+8	
33C/135	





SEMIDA

Hair Design

SEMIDA PINGOT Sp.j.
ul. Św Huberta 47b
PL 44-105 Gliwice
Tel. 0048 32 231 73 58
www.semida.com.pl
semida@semida.com.pl

