

GISELA



SUPREME

MAYER

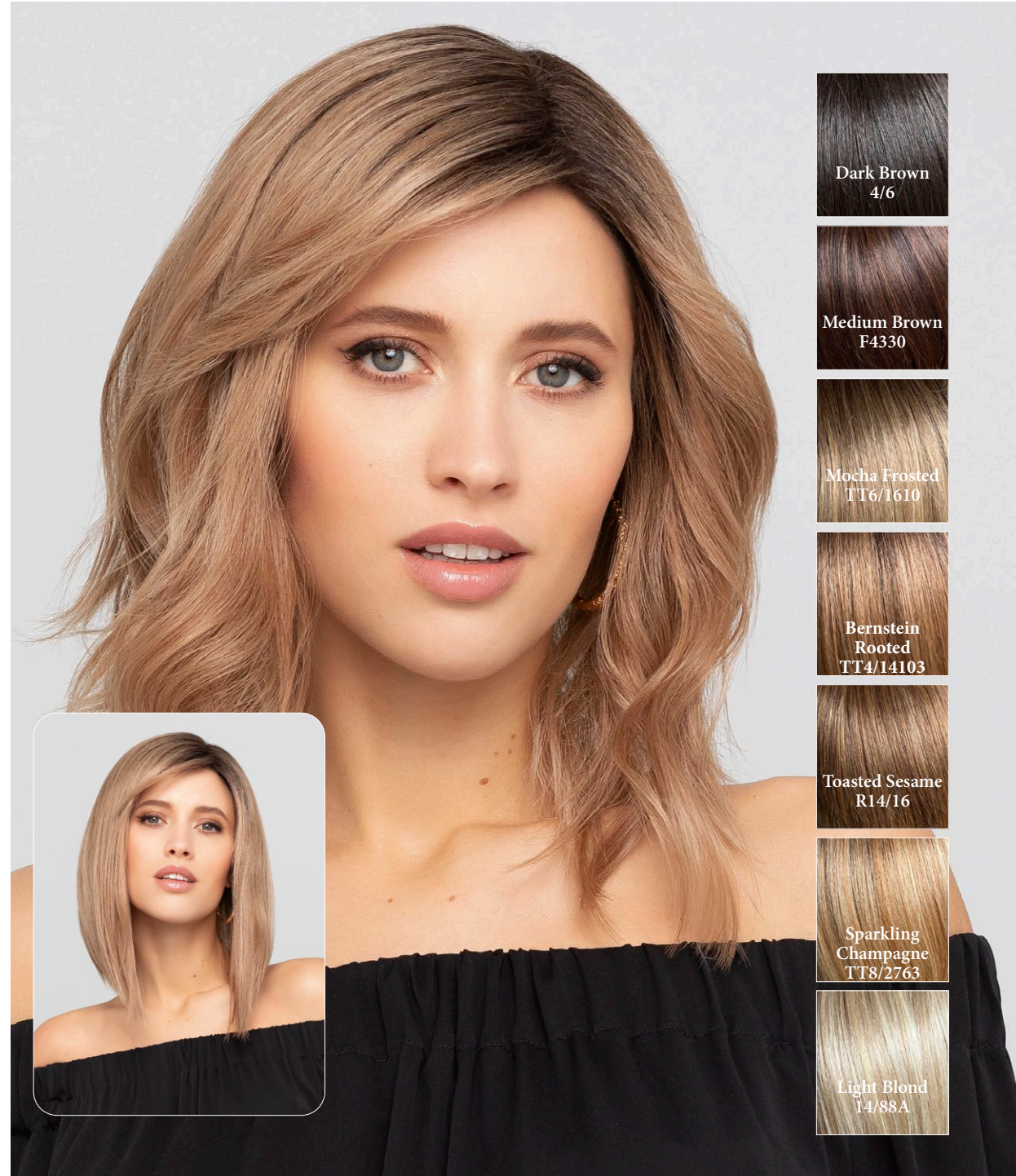


DUO FIBER

MH

Bernstein Rooted
TT4/14103

SUPREME 50% HUMAN HAIR + 50% HIGH HEAT FIBER
PAGE LONG ★★★★★ +LF
(LIGHT)



Dark Brown
4/6

Medium Brown
F4330

Mocha Frosted
TT6/1610

Bernstein
Rooted
TT4/14103

Toasted Sesame
R14/16

Sparkling
Champagne
TT8/2763

Light Blond
14/88A

MH

Sparkling Champagne
TT8/2763



Dark Brown
4/6

Medium Brown
F4330

Mocha Frosted
TT6/1610

SUPREME 50% HUMAN HAIR + 50% HIGH HEAT FIBER

LADY ★★★★★ +LF

MH

Toasted Sesame
R14/16



Bernstein Rooted
TT4/14103

Toasted Sesame
R14/16

Sparkling Champagne
TT8/2763

Light Blond
14/88A

SUPREME 50% HUMAN HAIR + 50% HIGH HEAT FIBER

MODA ★★★★★ +LF

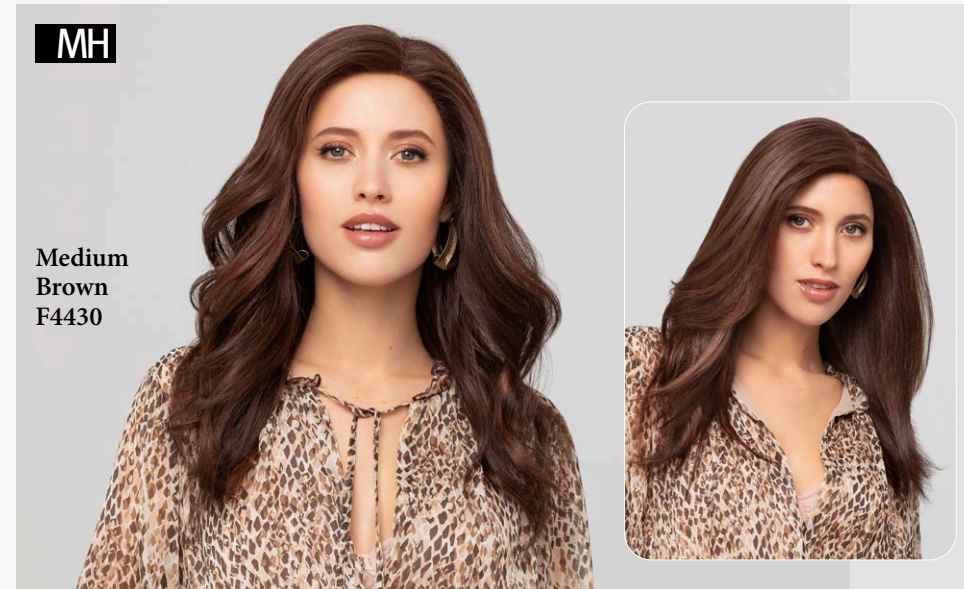
MH

Mocha Frosted
TT6/1610



MH

Medium Brown
F4430

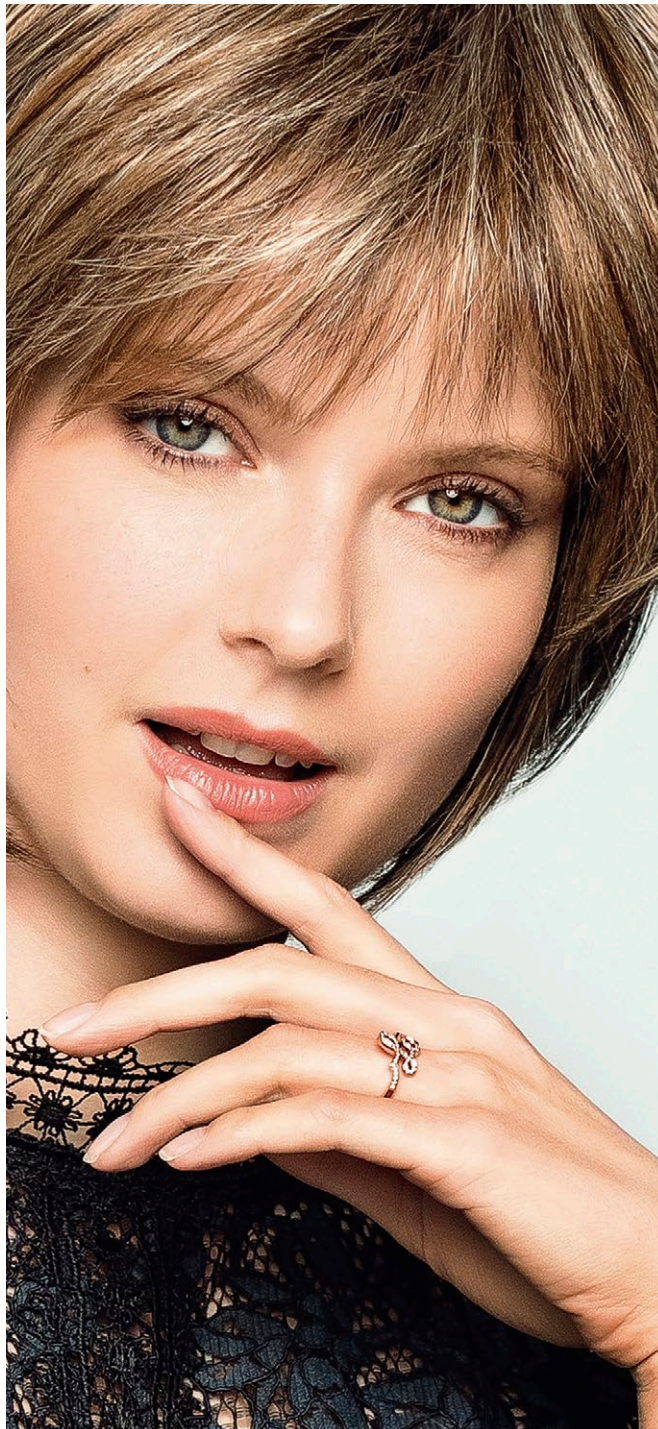


SUPREME 50% HUMAN HAIR + 50% HIGH HEAT FIBER

SHORT ★★★★★ +LF

SUPREME 50% HUMAN HAIR + 50% HIGH HEAT FIBER

LONG ★★★★★ +LF



(DE)

Die Duo Fiber Collection begeistert wieder mit neuen Modellen! Angesagte Styles und aktuelle Farbtrends machen die gesamte Kollektion besonders einzigartig.

Unsere Duo Fiber Modelle vereinen das Beste aus zwei besonderen Haarfasern, denn alle Modelle bestehen aus einer Mischung aus Echthaar und der hitzebeständigen High Heat Kunsthaarfaser.

Mit dieser Kombination lassen sich die Modelle mit bis zu 140 ° C Hitze behandeln und ganz individuell stylen.

Die Duo Fiber Modelle überzeugen mit natürlichem Volumen, einer besonderen Haarstruktur und einem ausgezeichneten Tragekomfort.

Die komplette Kollektion präsentiert Modelle mit unterschiedlichen Qualitätsabstufungen für eine noch größere Vielfalt.

(GB)

Experience our new hot Duo Fiber Collection styles! Fashionable cuts and fresh colors add up to an especially unique collection.

Our Duo Fiber styles benefit from a combination of the best characteristics of Human Hair and High Heat Fiber.

You can use heat up to 140°C on the pieces and create your own individual styles.

Natural volume, soft hair structure and an excellent wearing comfort will captivate you.

This collection offers styles in different cap constructions for a wide variety.

(FR)

Encore une fois La collection Duo Fiber nous inspire avec de nouveaux modèles! Les styles tendance et les couleurs à la mode rendent l'ensemble de la collection particulièrement unique.

Nos modèles Duo Fiber combinent le meilleur de deux fibres capillaires spéciales, nos modèles sont constitués d'un mélange de cheveux humains et de fibres capillaires synthétiques High Heat résistantes à la chaleur.

Avec ce mélange, les modèles peuvent être traités avec une chaleur allant jusqu'à 140 ° C et stylés individuellement. Les modèles Duo Fiber nous séduisent par leur volume naturel, une structure capillaire spéciale et un excellent confort de port.

La collection complète présente des modèles avec différentes finitions pour encore plus de variété.

(IT)

La collezione Duo Fiber ispira di nuovo con i nuovi modelli. Stili moderni e attuali colori rendono tutta la collezione particolarmente unica.

I nostri modelli sono composti di due fibre capillari. Questi modelli sono realizzati con una combinazione di capello naturale e fibra sintetica High Heat resistente al calore.

Questa combinazione permette di trattare il modello con un calore fino a 140° C e mettere in piega nella propria scelta. I modelli Duo Fiber convincono per il loro effetto naturale, una struttura unica del capello e un eccellente comfort.

La collezione completa presenta modelli con diverse gradazioni di qualità per una maggiore varietà.

(ES)

¡La colección Duo Fiber vuelve a inspirar con nuevos modelos! Los estilos de moda y las tendencias de color actuales hacen que toda la colección sea particularmente única.

Nuestros modelos de fibra dúo combinan lo mejor de dos fibras capilares especiales, porque todos los modelos consisten en una mezcla de cabello humano y la fibra capilar sintética resistente al calor.

Con esta combinación, los modelos pueden tratarse con calor de hasta 140 °C y peinarse individualmente.

Los modelos Duo Fiber convencer por su volumen natural, una estructura capilar especial y una excelente comodidad de uso.

La colección completa presenta modelos con diferentes niveles de calidad para una variedad aún mayor.



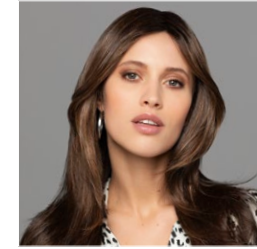
DUO ARIA
★★
22/613 Seite 8



DUO AVA LACE PART
★★★★+LF
637 Seite 19



DUO EMMA
★★★ (LACE PART)
123/637+8 Seite 7



DUO ERICA
★★★★+LF
8/16+2 Seite 10



DUO FIBER ABBEY
★★★★+LF
4/6 Seite 14



DUO FIBER KYLIE
★★★★★+LF
Seite 15



DUO FIBER LYNSEY
★★★★+LF
829 Seite 18



DUO FIBER SHYLA
★★★★★+LF
14/263+8 Seite 17



DUO FIONA
★★+LF
7 Seite 8



DUO FIRENZE
★★★★★+LF
4/6 Seite 14



DUO ISABELLA
★★★★+LF
14/263+8 Seite 7



DUO JORDAN
★★★ (LACE PART)
12/24+8 Seite 6



DUO KRISTA
★★★★+LF
12/24+8 Seite 11



DUO LADY
★★★★
27/234+8 Seite 13



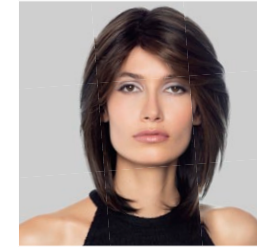
DUO LONG
★★★★+LF
263 Seite 12



DUO OLIVIA
★★
60 Seite 9



DUO OPHELIA
★★
12/24+8 Seite 9



DUO PAGE LONG
★★★★★+LF
8/16+2 Seite 12



DUO PREMIERE
★★★★★+LF
8/16+2 Seite 15



DUO SELENA LACE PART
★★★★+LF
27/234+8 Seite 19



DUO SHORT
★★★★★
4/6 Seite 13



DUO TANDI
★★★
263 Seite 16



DUO WHITNEY
★★★★
24/18T Seite 17



DUO YURI MONO
★★★★
10/130+2 Seite 16

MH

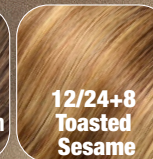
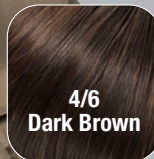
12/24+8
Toasted Sesame



DUO JORDAN ★★★ (LACE PART)

30% **Echthaar** / Human Hair
70% **Hightechfaser** / High Heat Fiber

Kopfgröße / head size:
Standard / average

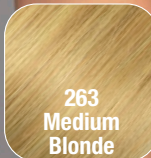
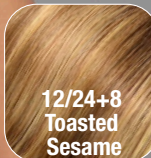
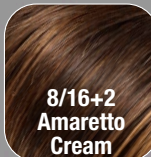
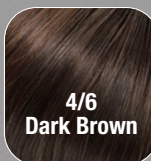


MH

123/637+8
Creamed Coffee

DUO EMMA ★★★
(LACE PART)

30% Echthaar / Human Hair
70% Hightechfaser / High Heat Fiber
Kopfgröße / head size:
Standard / average



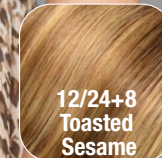
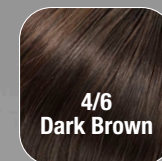
* Solange Vorrat! While stocks last!

MH

14/263+8
Sparkling
Champagne

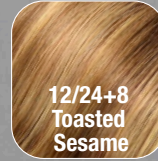
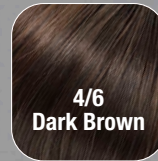
DUO ISABELLA
★★★★+LF

30% Echthaar / Human Hair
70% Hightechfaser / High Heat Fiber
Kopfgröße / head size:
Standard / average



MH

22/613
Dark Blonde



DUO ARIA ★★

30% Echthaar / Human Hair
70% Hightechfaser / High Heat Fiber
Kopfgröße / head size:
Standard / average

MH

7
Medium Brown

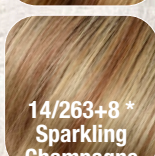
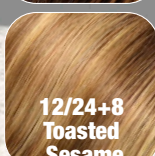


DUO FIONA ★★+LF

30% Echthaar / Human Hair
70% Hightechfaser / High Heat Fiber
Kopfgröße / head size:
Standard / average

MH

12/24+8
Toasted Sesame



DUO OPHELIA **

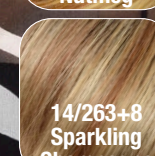
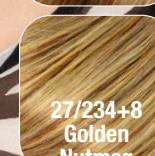
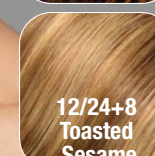
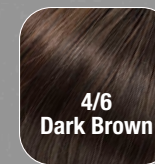
30% Echthaar / Human Hair
70% Hightechfaser / High Heat Fiber
Kopfgröße / head size:
Standard / average



* Solange Vorrat! While stocks last!

MH

60
Light Grey



DUO OLIVIA **

30% Echthaar / Human Hair
70% Hightechfaser / High Heat Fiber
Kopfgröße / head size:
Standard / average



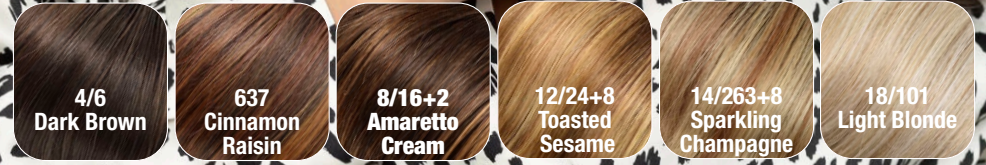
* Solange Vorrat! While stocks last!

MH

8/16+2
Amaretto Cream

DUO ERICA ★★★★★+LF

30% Echthaar / Human Hair
70% Hightechfaser / High Heat Fiber
Kopfgröße / head size:
Standard / average



MH

12/24+8
Toasted Sesame



DUO KRISTA ★★★★★+LF

30% Echthaar / Human Hair
70% Hightechfaser / High Heat Fiber

Kopfgröße / head size:
Standard / average



4/6
Dark Brown



637
Cinnamon
Raisin



12/24+8
Toasted
Sesame



14/263+8
Sparkling
Champagne

MH

263
Medium Blonde

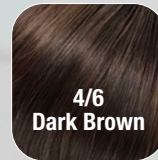


12/24+8
Toasted Sesame

DUO LONG ★★★★★+LF

30% Echthaar / Human Hair
70% Hightechfaser / High Heat Fiber

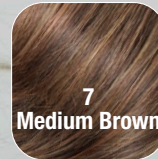
Kopfgröße / head size:
Standard / average



4/6
Dark Brown



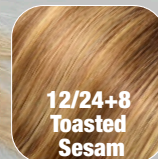
637 *
Cinnamon
Raisin



7
Medium Brown



8/16+2
Amaretto
Cream



12/24+8
Toasted
Sesam



14/263+8
Sparkling
Champagne



18/26 *
Mocha Frost



22/613 *
Dark Blonde



263
Medium
Blonde



18/101
Light Blonde

MH

8/16+2
Amaretto Cream

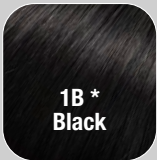


14/263+8
Sparkling Champagne

DUO PAGE LONG ★★★★★+LF

30% Echthaar / Human Hair
70% Hightechfaser / High Heat Fiber

Kopfgröße / head size:
Standard / average



1B *
Black



4/6
Dark Brown



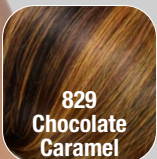
637
Cinnamon
Raisin



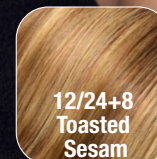
7
Medium Brown



8/16+2
Amaretto
Cream



829
Chocolate
Caramel



12/24+8
Toasted
Sesam



27/234+8
Golden Nutmeg



14/263+8
Sparkling
Champagne



18/26
Mocha Frost



22/613
Dark Blonde



263
Medium
Blonde



18/101
Light Blonde



56
Medium Grey

MH

4/6
Dark Brown



DUO SHORT ★★★★★

(Solange Vorrat! While stocks last!)

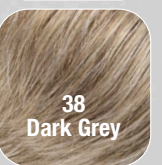
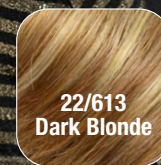
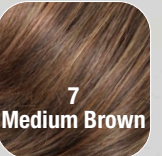
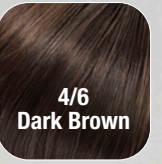
30% Echthaar / Human Hair
70% Hightechfaser / High Heat Fiber

Kopfgröße / head size:
Standard / average

* Solange Vorrat! While stocks last!

MH

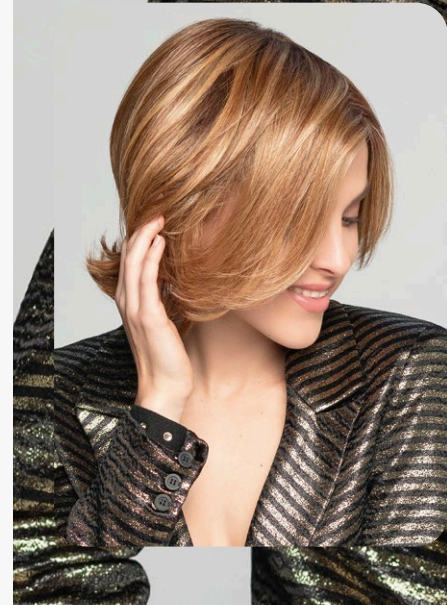
27/234+8
Golden Nutmeg



DUO LADY ★★★★★

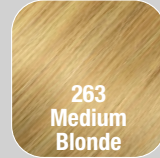
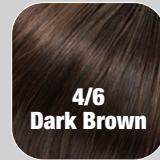
30% Echthaar / Human Hair
70% Hightechfaser / High Heat Fiber

Kopfgröße / head size:
Standard / average



MH

4/6
Dark Brown



DUO FIRENZE ★★★★★+LF

(Solange Vorrat! While stocks last!)

30% Echthaar / Human Hair
70% Hightechfaser / High Heat Fiber

Kopfgröße / head size:
Standard / average

MH

4/6
Dark Brown



Solange Vorrat!/while stocks last!

**DUO FIBER
ABBEY ★★★★★+LF
MONO LACE DELUXE**

30% Echthaar / Human Hair
70% Hightechfaser / High Heat Fiber

Kopfgröße / head size:
Standard / average



MH

8/16+2
Amaretto Cream



DUO PREMIERE

★★★★★+LF

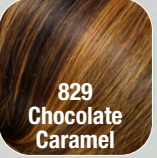
(Solange Vorrat! While stocks last!)

30% Echthaar / Human Hair
70% Hightechfaser / High Heat Fiber

Kopfgröße / head size:
Standard / average



MH



DUO FIBER KYLIE ★★★★★+LF MONO LACE DELUXE

(Solange Vorrat! While stocks last!)

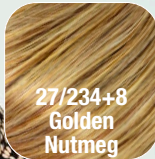
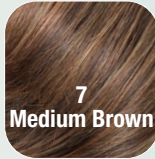
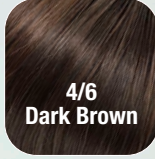
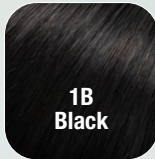
30% Echthaar / Human Hair
70% Hightechfaser / High Heat Fiber

Kopfgröße / head size:
Standard / average



MH

637
Cinnamon Raisin



DUO YURI MONO ★★★★★

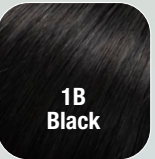
30% Echthaar / Human Hair
70% Hightechfaser / High Heat Fiber
Kopfgröße / head size:
Standard / average



* Solange Vorrat! While stocks last!

MH

263
Medium Blonde



DUO TANDI ★★★

30% Echthaar / Human Hair
70% Hightechfaser / High Heat Fiber
Kopfgröße / head size:
Standard / average



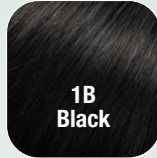
MH

24/18T
Frosted

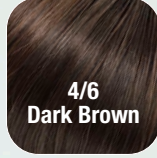


DUO WHITNEY ★★★

30% Echthaar / Human Hair
70% Hightechfaser / High Heat Fiber
Kopfgröße / head size:
Standard / average



1B
Black



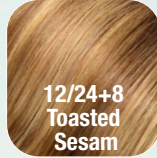
4/6
Dark Brown



637
Cinnamon
Raisin



10/130+2
Chocolate
Cherry



12/24+8
Toasted
Sesam



27/234+8
Golden
Nutmeg



14/263+8
Sparkling
Champagne



18/26
Mocha Frost



24/18T
Frosted

MH

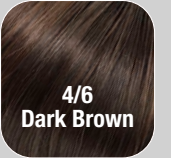
14/263+8
Sparkling
Champagne



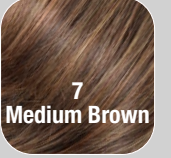
DUO FIBER SHYLA ★★★★★+LF

MONO LACE DELUXE

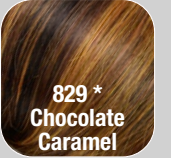
30% Echthaar / Human Hair
70% Hightechfaser / High Heat Fiber
Kopfgröße / head size:
Standard / average



4/6
Dark Brown



7
Medium Brown



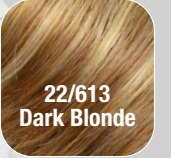
829 *
Chocolate
Caramel



14/263+8
Sparkling
Champagne



18/26
Mocha Frost



22/613
Dark Blonde



263 *
Medium
Blonde



18/101
Light Blonde

* Solange Vorrat! While stocks last!

MH

829
Chocolate
Caramel



**DUO FIBER
LYNSEY ****+LF
MONO LACE DELUXE**

30% Echthaar / Human Hair
70% Hightechfaser / High Heat Fiber
Kopfgröße / head size:
Standard / average



- 4/6 Dark Brown
- 637 Cinnamon Raisin
- 7 * Medium Brown
- 829 Chocolate Caramel
- 12/24+8 Toasted Sesam
- 14/263+8 Sparkling Champagne
- 18/22 * Almond Breeze
- 263 * Medium Blonde
- 18/101 Light Blonde

* Solange Vorrat! While stocks last!

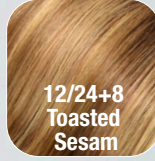
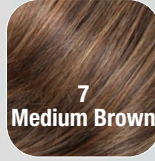
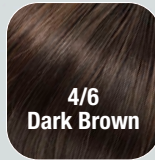
MH

637
Cinnamon Raisin



**DUO AVA
LACE PART ***+LF**

30% Echthaar / Human Hair
70% Hightechfaser / High Heat Fiber
Kopfgröße / head size:
Standard / average



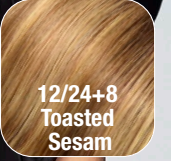
MH

27/234+8
Golden Nutmeg



**DUO SELENA
LACE PART ***+LF**

30% Echthaar / Human Hair
70% Hightechfaser / High Heat Fiber
Kopfgröße / head size: 56 cm



GM
GISELA
MAYER
HAIR COLLECTION

MH
MAYER
HAIR
HAIR COLLECTION



SIMPLY THE BEST!

Gisela Mayer GmbH / Mayer Hair GmbH Litzelsdorfer Straße 3 D-87700 Memmingen
Tel: +49 (0)8331 9540-0 Fax: +49 (0)8331 9540-34 info@gisela-mayer.com www.gisela-mayer.com