

# GISELA MAYER



NATURE HAIR COLLECTION  
100% High Heat Fiber



*DUO FIBER* ● ● ●

# NATURE HAIR COLLECTION

(DE)

Die neue Nature Collection hat bereits in kurzer Zeit zahlreiche Träger|innen begeistert. Alle Modelle der Nature Linie bestehen aus der hitzebeständigen High Heat Kunsthaarfaser.

Die High Heat Fiber wirkt nicht nur optisch unglaublich natürlich, sondern fühlt sich auch so an. Angesagte Farbtrends, die hochwertige Verarbeitung und die faszinierende Natürlichkeit machen aus den Nature Modellen wahre Kundenlieblinge, die Zweithaar neu definieren.

(GB)

Our newly introduced Natural Collection conquered numerous clients in fleeting time. All styles are made of high heat fiber which not only look stunningly natural, but also feel the same way. Nature styles reinvent hair replacement with their hot color trends, premium workmanship and fascinating naturalness.

(FR)

La nouvelle collection Nature a déjà conquis de nombreux adeptes en peu de temps. Tous les modèles de la ligne Nature sont fabriqués à base de fibre capillaire synthétique High Heat résistante à la chaleur.

La fibre à haute température a non seulement l'air incroyablement naturelle, mais elle a aussi un toucher qui rapproche du naturel.

Les tendances de couleurs à la mode, la fabrication de haute qualité et le naturel fascinant font des modèles Nature de véritables favoris chez nos clients qui redécouvrent les cheveux de remplacement.

(IT)

La nuova collezione Nature ha già affascinato numerosi indossatori in poco tempo. Tutti i modelli della linea Nature sono realizzati con la fibra sintetica High Heat resistente al calore.

La fibra High Heat non sembra solo esteticamente ma offre anche una sensazione di un tocco del tutto naturale. I colori trend, lavorazione di alta qualità e un'affascinante naturalezza rendono i modelli Nature i preferiti dei clienti, e la migliore scelta per sostituire i capelli.

(ES)

La nueva colección Nature ya ha impresionado a numerosos usuarios en poco tiempo. Todos los modelos de la línea Nature están hechos de fibra capilar sintética High Heat resistente al calor. La fibra de alta temperatura no solo se ve increíblemente natural, sino que también se siente así. Las tendencias de color de moda, la mano de obra de alta calidad y la naturalidad fascinante hacen que los modelos Nature sean los verdaderos favoritos de los clientes que redefinen el segundo cabello.



**NATURE DELUXE LONG**  
★★★★★+LF

RL19/23 Seite 5



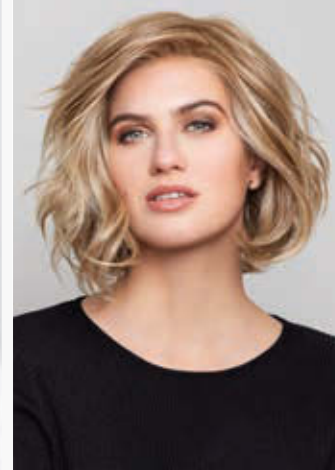
**NATURE FLIRT MONO LACE**  
★★★★+LF

RL17/23T Seite 4



**NATURE FRENCH LACE**  
★★+LF

RL13/88 Seite 4



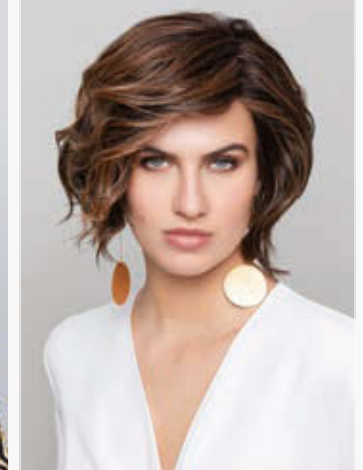
**NATURE GLAM MONO LACE**  
★★★★+LF

RL13/88 Seite 8



**NATURE KISS MONO**  
★★★★

RL14/22RT Seite 5



**NATURE LIV**  
★★★ (Lace Part)

RL8/29 Seite 8



**NATURE LONG MONO LACE**  
★★★★+LF

RL19/23RT Seite 6



**NATURE PAGE MONO LACE DELUXE**  
★★★★★+LF

RL14/22RT Seite 9



**NATURE PERFECT MOVE**  
★★★

RL8/29RT Seite 7



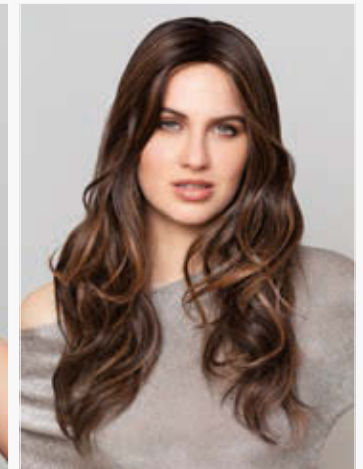
**NATURE RUN MONO LACE**  
★★★★+LF

RL19/23 Seite 7



**NATURE STAGE MONO LACE**  
★★★★+LF

RL14/22 Seite 9



**NATURE STATEMENT DELUXE**  
★★★★★+LF

RL8/29RT Seite 6

GM

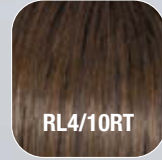
RL17/23RT

NATURE HAIR COLLECTION

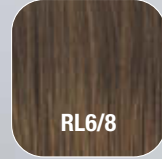
NATURE FLIRT  
MONO LACE ★★★★★+LF  
100% High Heat Fiber



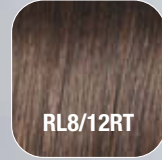
RL4/6



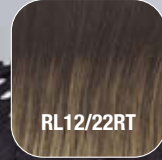
RL4/10RT



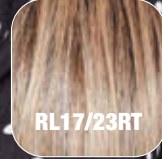
RL6/8



RL8/12RT



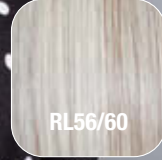
RL12/22RT



RL17/23RT



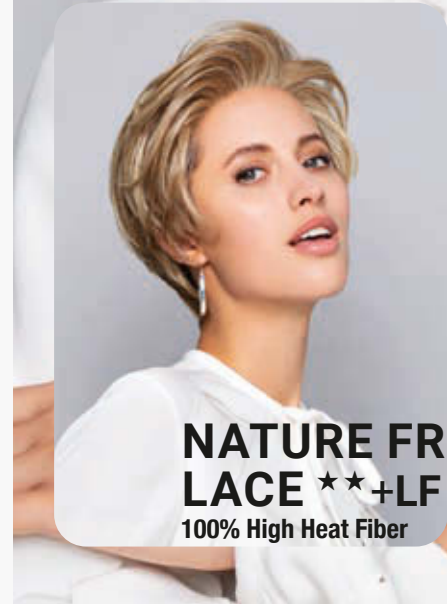
RL19/23



RL56/60

GM

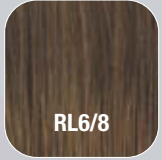
RL13/88



NATURE FRENCH  
LACE ★★+LF  
100% High Heat Fiber



RL4/6



RL6/8



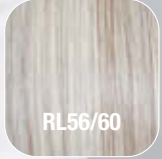
RL13/88



RL14/22RT



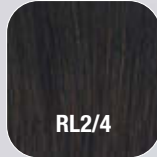
RL613RT



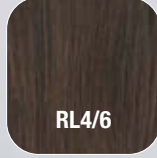
RL56/60

GM

RL14/22RT



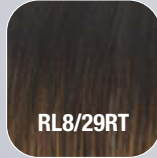
RL2/4



RL4/6



RL6/8



RL8/29RT



RL10/12

### NATURE KISS MONO ★★ ★★

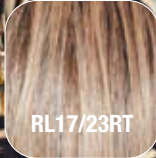
100% High Heat Fiber



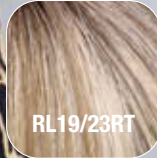
RL14/22RT



RL14/25RT



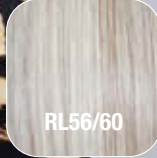
RL17/23RT



RL19/23RT



RL613RT



RL56/60



GM

RL19/23



RL2/4



ab/  
from  
Dezember  
2021

RL4/6

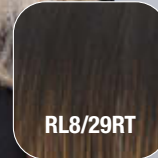


RL6/8



ab/  
from  
Dezember  
2021

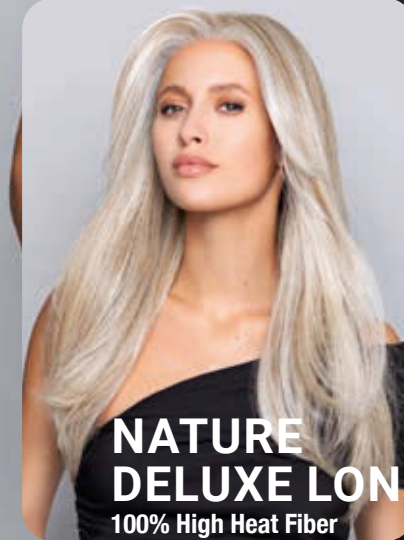
RL4/10RT



RL8/29RT



RL10/12



### NATURE DELUXE LONG ★★ ★★ ★★ +LF

100% High Heat Fiber



RL12/22RT



ab/  
from  
Dezember  
2021

RL14/22RT



RL14/25RT



ab/  
from  
Dezember  
2021

RL16/88



RL19/23



RL19/23RT



ab/  
from  
Dezember  
2021

RL29/25



ab/  
from  
Dezember  
2021

RL29/33RT

ab/from Juni 2022

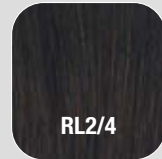
GM

RL19/23RT

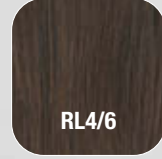
NATURE HAIR COLLECTION

# NATURE LONG MONO LACE ★★★★★+LF

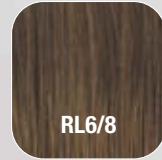
100% High Heat Fiber



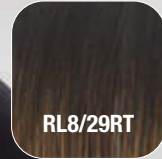
RL2/4



RL4/6



RL6/8



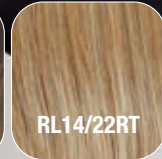
RL8/29RT



RL10/12



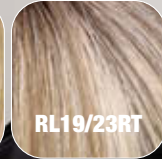
RL12/22RT



RL14/22RT



RL14/25RT



RL19/23RT



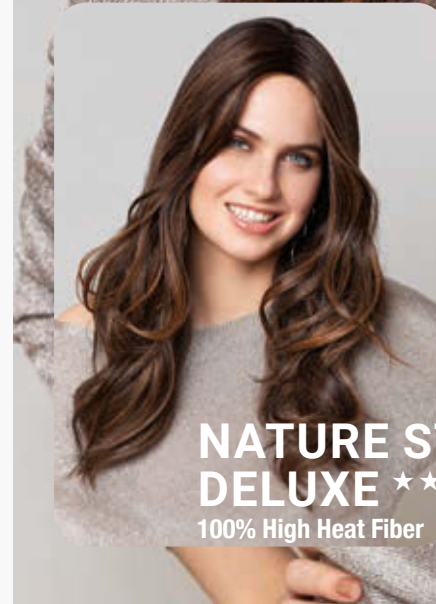
RL32/31



RL119

GM

RL8/29RT



# NATURE STATEMENT DELUXE ★★★★★+LF

100% High Heat Fiber



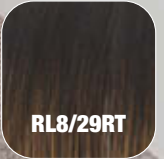
RL2/4



RL4/6



RL6/8



RL8/29RT



RL10/12



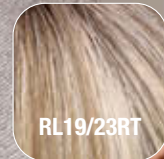
RL12/22RT



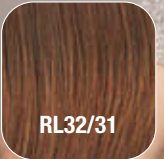
RL14/22RT



RL14/25RT



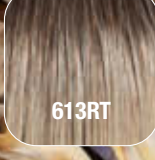
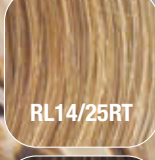
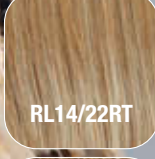
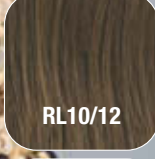
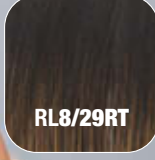
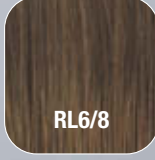
RL19/23RT



RL32/31

GM

RL8/29RT

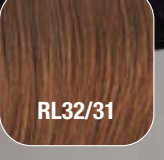
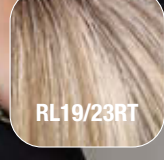
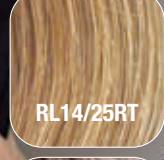
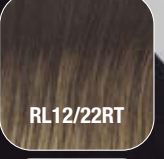
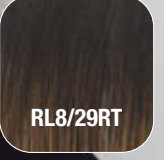
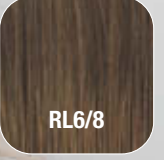
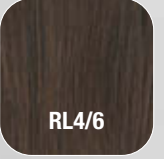


**NATURE PERFECT MOVE** ★★★  
100% High Heat Fiber



GM

RL19/23



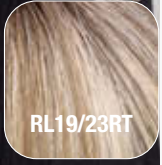
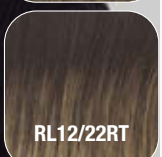
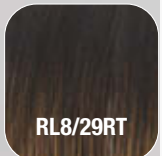
**NATURE RUN MONO LACE** ★★★★★+LF  
100% High Heat Fiber



GM

RL13/88

NATURE HAIR COLLECTION

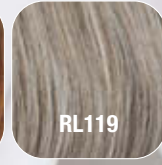
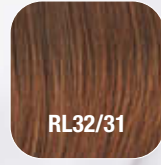
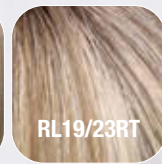
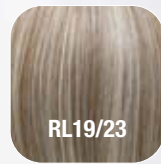
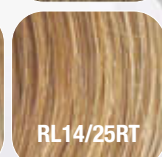
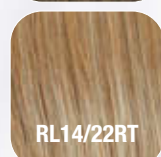
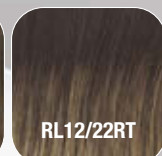
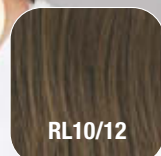
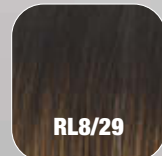
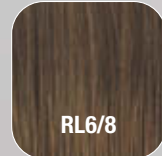
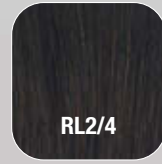


**NATURE GLAM  
MONO LACE ★★★★★+LF**  
100% High Heat Fiber

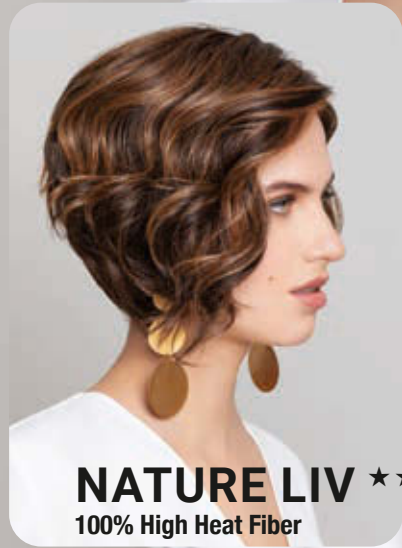


GM

RL8/29



**NATURE LIV ★★★★★+(Lace Part)**  
100% High Heat Fiber





GM

RL14/22

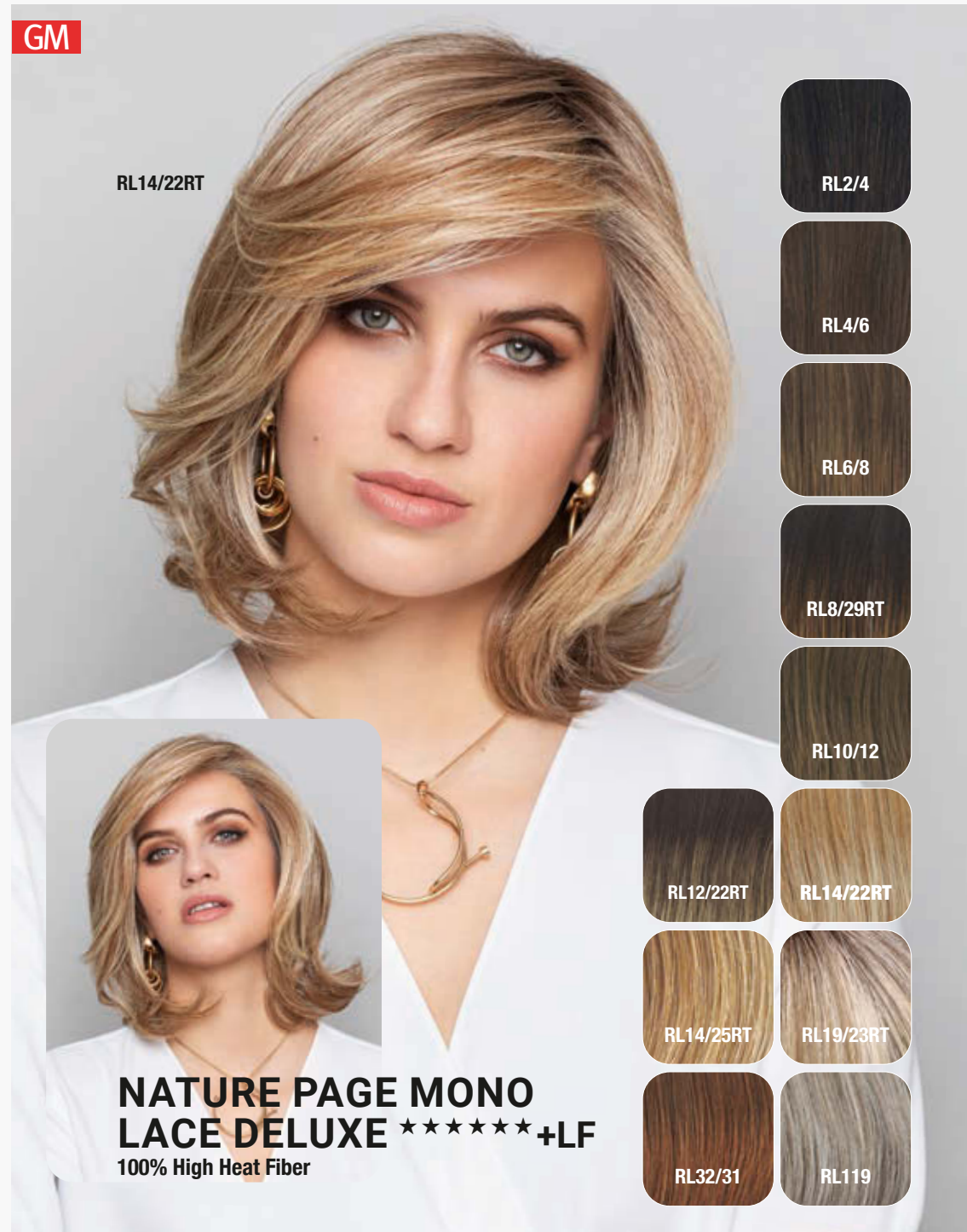


**NATURE STAGE MONO  
LACE ★★★★★+LF**  
100% High Heat Fiber

- RL2/4
- RL4/6
- RL8/29RT
- RL12/22RT
- RL14/22
- RL14/22RT
- RL14/25RT
- RL19/23RT

GM

RL14/22RT



**NATURE PAGE MONO  
LACE DELUXE ★★★★★★+LF**  
100% High Heat Fiber

- RL2/4
- RL4/6
- RL6/8
- RL8/29RT
- RL10/12
- RL12/22RT
- RL14/22RT
- RL14/25RT
- RL19/23RT
- RL32/31
- RL119

DUO FIBER



(DE)

Mit unserer Duo Fiber Collection haben wir Modelle entwickelt, die die besten Eigenschaften von Echthaar und der hitzebeständigen High Tech Fiber vereinen.

Die Auswahl an verschiedenen Styles und Farbnuancen, der hervorragende Tragekomfort und die sorgfältige Verarbeitung machen aus der Duo Fiber Linie eine einzigartige Kollektion.

(GB)

In our Duo Fiber Collection the best characteristics of human hair and high temperature fiber melt. The variety of cuts and colors, splendid wearing comfort and accurate workmanship truly result in an unique collection.

(FR)

Avec notre collection de Duo Fiber, nous avons développé des modèles qui combinent les meilleures propriétés des cheveux humains et de fibre high-tech résistante à la chaleur.

La sélection de différents styles et nuances de couleurs, l'excellent confort de port et la finition soignée font de la ligne Duo Fiber une collection unique.

(IT)

Con la nostra collezione Duo Fiber abbiamo sviluppato modelli composti con capelli umani di migliore qualità e la fibra High Tech resistente al calore.

La varietà di diversi stili e tonalità, l'eccellente comfort e l'accurata lavorazione rendono la linea Duo Fiber una collezione unica.

(ES)

Con nuestra colección Duo Fiber, hemos desarrollado modelos que combinan las mejores propiedades del cabello humano y la fibra de alta tecnología resistente al calor. La selección de diferentes estilos y matices de color, la excelente comodidad de uso y la cuidada mano de obra hacen de la línea Duo Fiber una colección única.



DUO AVA LACE PART  
★★★★+LF

637 Seite 19



DUO FIBER ABBEY  
★★★★+LF

4/6 Seite 14



DUO FIBER AUBREY  
★★★★+LF

637 Seite 16



DUO FIBER KYLIE  
★★★★+LF

18/26 Seite 15



DUO FIBER LYNSEY  
★★★★+LF

18/29 Seite 16



DUO FIBER SHYLA  
★★★★+LF

14/263+8 Seite 17



DUO FIRENZE  
★★★★+LF

7 Seite 14



DUO LADY  
★★★★

27/234+8 Seite 13



DUO LONG  
★★★★+LF

263 Seite 12



DUO PAGE LONG  
★★★★+LF

8/16+2 Seite 12



DUO PREMIERE  
★★★★+LF

637 Seite 15



DUO SELENA LACE PART  
★★★★+LF

27/234+8 Seite 19



DUO SHORT  
★★★★

8/16+2 Seite 13



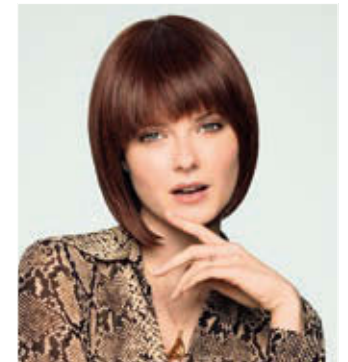
DUO TANDI  
★★★

263 Seite 18



DUO WHITNEY  
★★★

24/18T Seite 17

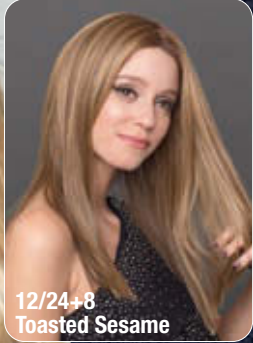


DUO YOURI MONO  
★★★★

10/130+2 Seite 18

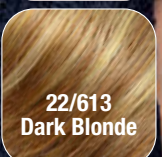
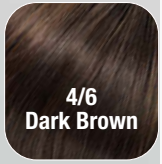
MH

263  
Medium Blonde



**DUO LONG** ★★★★★+LF

30% Echthaar / Human Hair  
70% Hightechfaser / High Tech Fiber  
Kopfgröße / head size:  
Standard / average

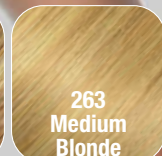
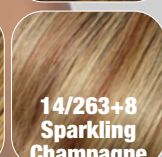
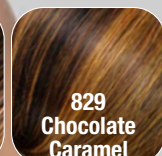
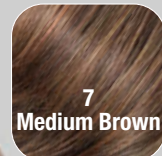
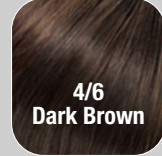
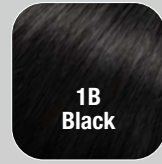
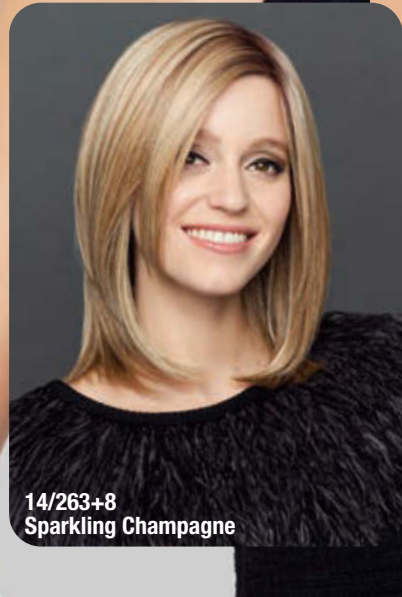


MH

8/16+2  
Amaretto Cream

**DUO PAGE LONG** ★★★★★+LF

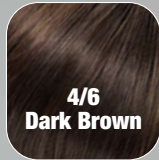
30% Echthaar / Human Hair  
70% Hightechfaser / High Tech Fiber  
Kopfgröße / head size:  
Standard / average



\* Solange Vorrat! While stocks last!

MH

4/6  
Dark Brown



**DUO SHORT** ★★★★★

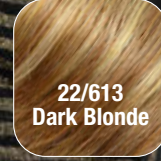
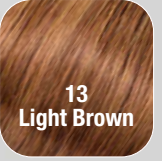
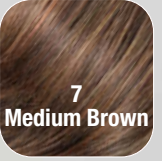
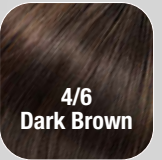
30% Echthaar / Human Hair  
70% Hightechfaser / High Tech Fiber  
Kopfgröße / head size:  
Standard / average



\* Solange Vorrat! While stocks last!

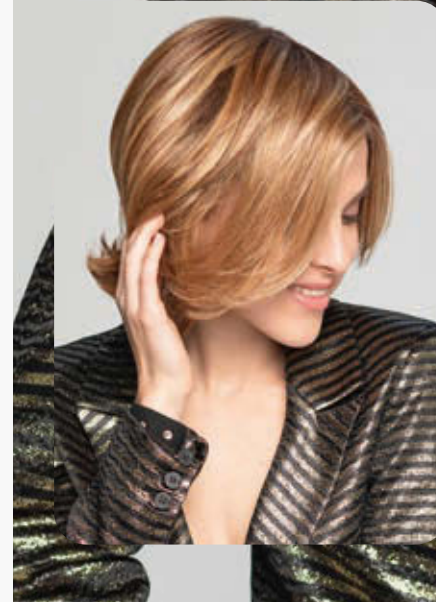
MH

27/234+8  
Golden Nutmeg



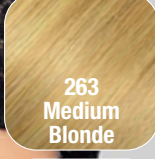
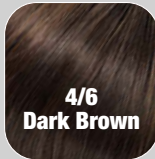
**DUO LADY** ★★★★★

30% Echthaar / Human Hair  
70% Hightechfaser / High Tech Fiber  
Kopfgröße / head size:  
Standard / average



MH

4/6  
Dark Brown



**DUO FIRENZE** ★★★★★+LF

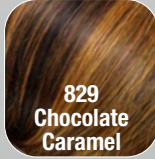
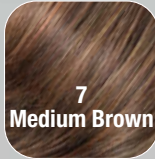
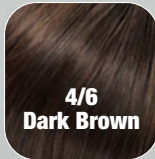
30% Echthaar / Human Hair  
70% Hightechfaser / High Tech Fiber  
Kopfgröße / head size:  
Standard / average



\* Solange Vorrat! While stocks last!

MH

4/6  
Dark Brown



**DUO FIBER**  
**ABBEY** ★★★★★+LF  
**MONO LACE DELUXE**

30% Echthaar / Human Hair  
70% Hightechfaser / High Tech Fiber  
Kopfgröße / head size:  
Standard / average

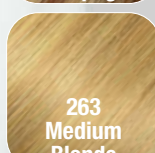


MH

637  
Cinnamon Raisin

**DUO PREMIERE**  
★★★★★+LF

30% Echthaar / Human Hair  
70% Hightechfaser / High Tech Fiber  
Kopfgröße / head size:  
Standard / average

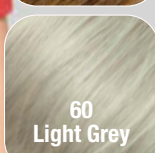
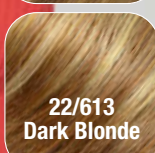
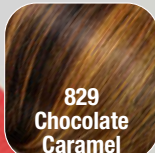
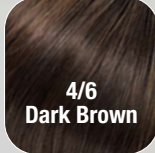
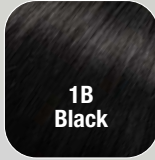
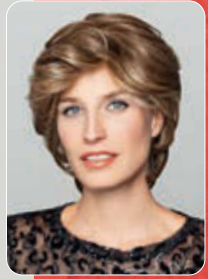


MH

18/26  
Mocha Frost

**DUO FIBER**  
**KYLIE** ★★★★★+LF  
**MONO LACE DELUXE**

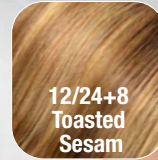
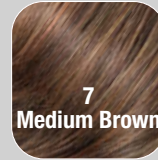
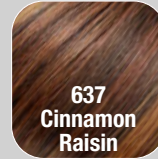
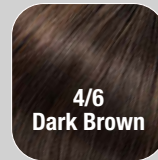
30% Echthaar / Human Hair  
70% Hightechfaser / High Tech Fiber  
Kopfgröße / head size:  
Standard / average



\* Solange Vorrat! While stocks last!

MH

829  
Chocolate Caramel



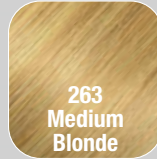
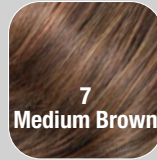
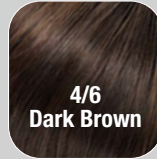
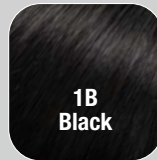
**DUO FIBER  
LYNSEY ★★★★★+LF  
MONO LACE DELUXE**

30% Echthaar / Human Hair  
70% Hightechfaser / High Tech Fiber

Kopfgröße / head size:  
Standard / average

MH

637  
Cinnamon Raisin



**DUO FIBER  
AUBREY ★★★★★+LF  
MONO LACE DELUXE**

(Solange Vorrat! While stocks last!)

30% Echthaar / Human Hair  
70% Hightechfaser / High Tech Fiber

Kopfgröße / head size:  
Standard / average

\* Solange Vorrat! While stocks last!



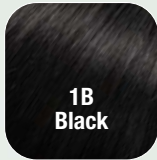
MH

24/18T  
Frosted

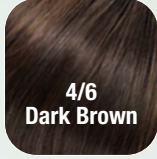


### DUO WHITNEY ★★★

30% Echthaar / Human Hair  
70% Hightechfaser / High Tech Fiber  
Kopfgröße / head size:  
Standard / average



1B  
Black



4/6  
Dark Brown



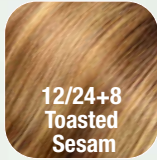
637  
Cinnamon  
Raisin



8/16+2  
Amaretto  
Cream



10/130+2  
Chocolate  
Cherry



12/24+8  
Toasted  
Sesam



27/234+8  
Golden  
Nutmeg



14/263+8  
Sparkling  
Champagne



18/26  
Mocha Frost



24/18T  
Frosted

MH

14/263+8  
Sparkling  
Champagne

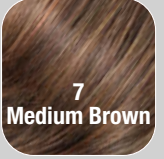


### DUO FIBER SHYLA ★★★★★+LF MONO LACE DELUXE

30% Echthaar / Human Hair  
70% Hightechfaser / High Tech Fiber  
Kopfgröße / head size:  
Standard / average



4/6  
Dark Brown



7  
Medium Brown



829  
Chocolate  
Caramel



14/263+8  
Sparkling  
Champagne



18/26  
Mocha Frost



22/613  
Dark Blonde



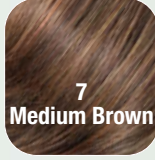
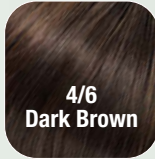
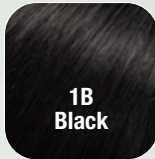
263  
Medium  
Blonde



18/101  
Light Blonde

MH

10/130+2  
Chocolate Cherry



### DUO YURI MONO ★★★★★

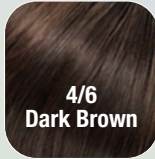
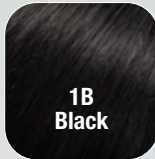
30% Echthaar / Human Hair  
70% Hightechfaser / High Tech Fiber  
Kopfgröße / head size:  
Standard / average



\* Solange Vorrat! While stocks last!

MH

263  
Medium Blonde



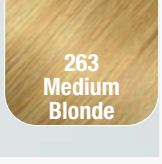
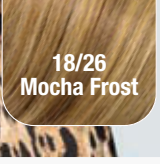
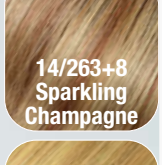
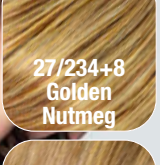
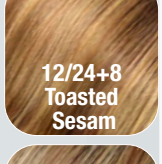
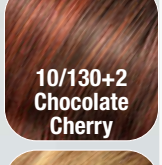
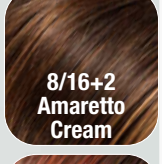
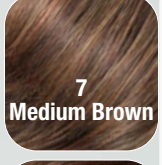
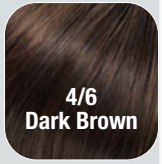
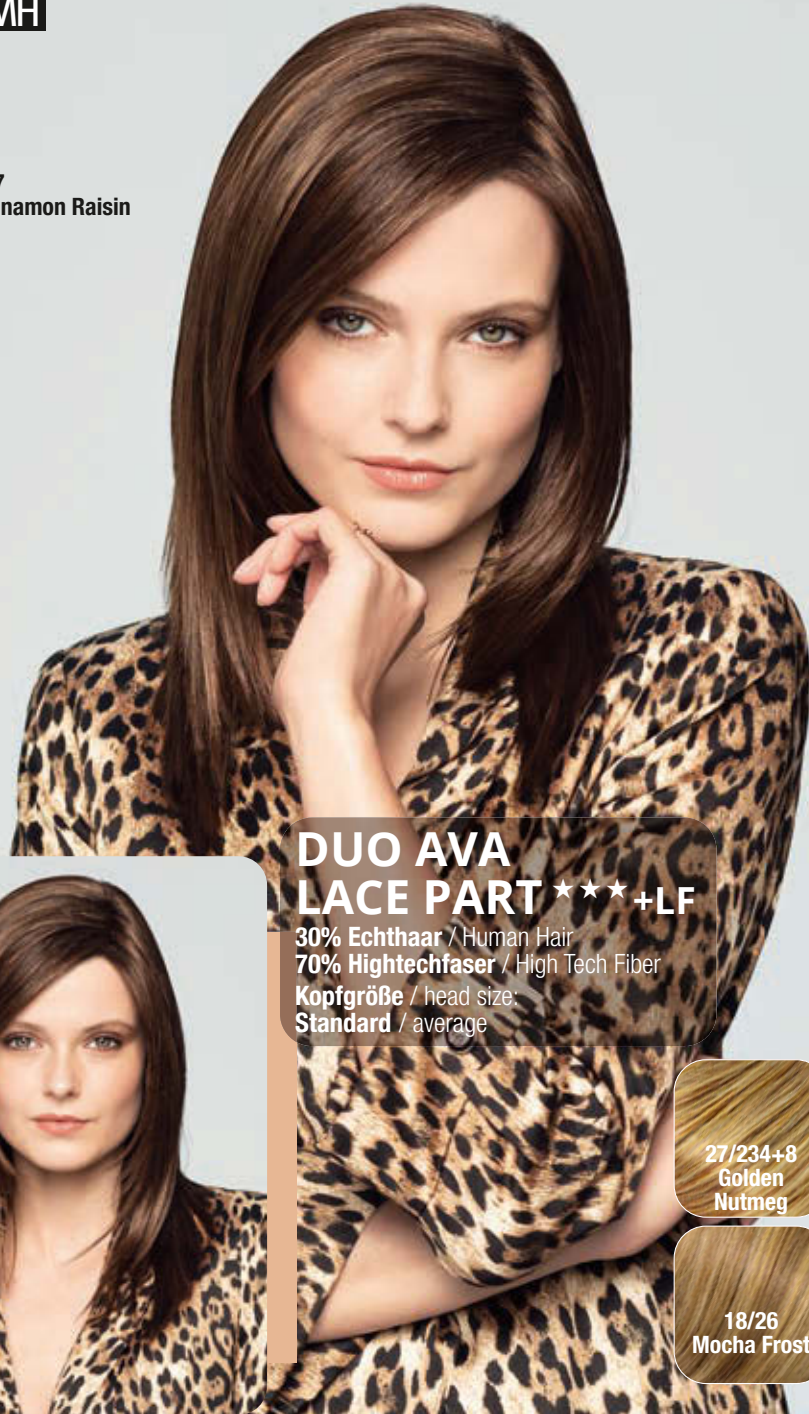
### DUO TANDI ★★★

30% Echthaar / Human Hair  
70% Hightechfaser / High Tech Fiber  
Kopfgröße / head size:  
Standard / average



MH

637  
Cinnamon Raisin



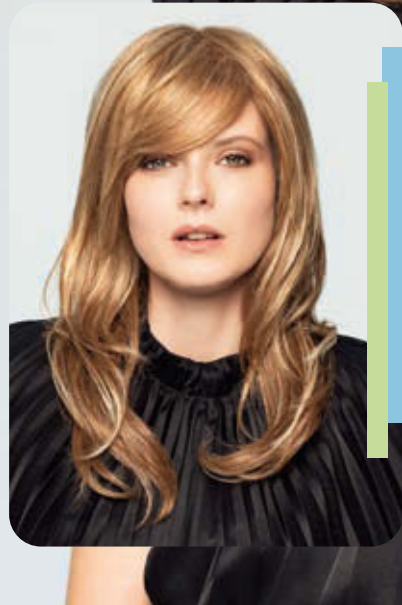
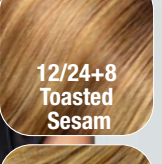
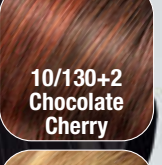
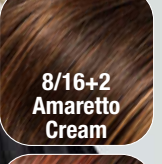
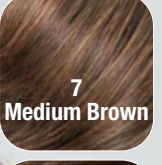
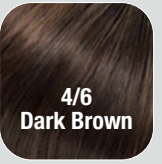
**DUO AVA  
LACE PART ★★★+LF**

30% Echthaar / Human Hair  
70% Hightechfaser / High Tech Fiber  
Kopfgröße / head size:  
Standard / average



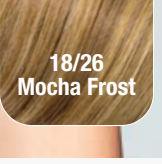
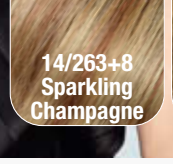
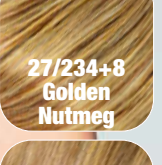
MH

27/234+8  
Golden Nutmeg



**DUO SELENA  
LACE PART ★★★+LF**

30% Echthaar / Human Hair  
70% Hightechfaser / High Tech Fiber  
Kopfgröße / head size: 56 cm





**SIMPLY THE BEST!**

Gisela Mayer GmbH / Mayer Hair GmbH Litzelsdorfer Straße 3 D-87700 Memmingen  
Tel: +49 (0)8331 9540-0 Fax: +49 (0)8331 9540-34 info@gisela-mayer.com www.gisela-mayer.com

**GM**  
GISELA  
MAYER  
HAIR COLLECTION

**MH**  
MAYER  
HAIR  
HAIR COLLECTION