

MH
MAYER
HAIR
HAIR COLLECTION

2019/2020

HIGH-END COMFORT COLLECTION

SIMPLY THE BEST!



DE

Die High-End Comfort Collection ist unsere 6 Sterne Kollektion, die die höchsten Ansprüche an Qualität, Tragekomfort und Stil erfüllt. 100% handgeknüpft, große Lace Front bis über die Tempeln, absolut natürlicher Effekt. Unsere federleichten Perücken in allen Kopfgrößen, in traumhaften Color-Shades, perfekt für alle Altersgruppen. Die Kollektion der Meisterklasse – Simply the best!

GB

High-End Comfort Collection – the 6 star collection – setting standards on quality, wearing comfort and style. All wigs are light as a feather, come in different sizes as well as wonderful color shades - a perfect match for all ages. 100% hand made with large lace front from temple to temple. This creates an absolutely natural look. A masterpiece collection – Simply the best!

FR

La collection High End Confort est notre collection 6 étoiles, laquelle répond en termes de style et de confort aux exigences les plus élevées: 100 % montage à la main, bordure invisible de temple à temple, effet naturel absolu. Nos perruques poids plume dans toutes les tailles, une gamme de coloris fantastique, parfaites pour tous les âges. La collection championne toutes catégories – Simply the best !

IT

La High-End Comfort Collection é la nostra nuova collezione 6 stelle che soddisfa le più grandi esigenze in qualità, comfort e stile. 100% annodata a mano, grande Lace Front fino alle tempie ed effetto naturale. Le nostre parrucche leggere disponibili in tutte le misure e con fantastiche sfumature di colori sono perfette per qualsiasi età. La collezione di qualità eccezionale – Simply the best!

ES

La colección High-End Comfort es nuestra colección de 6 estrellas que cumple con los más altos estándares de calidad, comodidad y estilo. 100% anudado a mano, gran frente de encaje en la parte superior, efecto absolutamente natural. Nuestras pelucas están en todos los tamaños de cabeza, en tonos de colores magníficos, perfectas para todas las edades. La colección de clase magistral- ¡Simplemente la mejor!



Gemeinsam unvergleichlich!

Das Mayer Hair-Team – kompetent, freundlich und immer für den Kunden da. Wir bieten exzellente Spitzenprodukte und die größte Vielfalt an Perücken im internationalen Markt. Wir sind Spezialisten mit einem Auge für das Besondere. Unsere Modelle werden in vielen einzelnen Schritten und in präziser Handarbeit angefertigt. Vom sorgfältigen Knüpfen bis hin zum aufwendigen Färben und dem abschließenden Feinschliff wird nichts dem Zufall überlassen. Das Ergebnis sind federleichte Modelle, die wie eine zweite Haut sitzen, in den jeweiligen Größen Small, Medium und Large erhältlich sind und den höchsten Tragekomfort bieten.

Wir stehen für Excellence.

★★★★★ +LF

Volle Lace Front (ganzer Oberkopf) – 100% handgeknüpft

Full Lace Front (whole Top) – 100% handknotted

Plus cinéma / tulle frontal complet (sur tout le dessus de tête) - 100% implanté main

Rete di teatro completa (intera sommità) - 100% lavorato a mano

Tul frontal completo - 100% picado a mano

ото лба до макушки Монофиламент - 100% ручное плетение

Seite 10



Catwalk Deluxe Super

Seite 10



Catwalk Deluxe Super Large

Seite 11



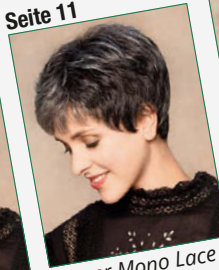
Ginger Mono Lace Deluxe

Seite 11



Ginger Mono Lace Deluxe Large

Seite 11



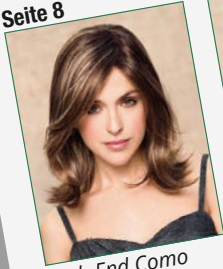
Ginger Mono Lace Deluxe Small

Seite 5



High End Celine

Seite 8



High End Como Lace Short

Seite 15



High End Page

Seite 9



High End Pauline Lace Short

Seite 13



High End Sharon

Seite 13



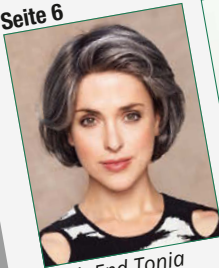
High End Sharon Large

Seite 19



High End Star

Seite 6



High End Tonia Long

Seite 23



High End Techno Top Filler Ultra Long

Seite 22



High End Top Filler

Seite 22



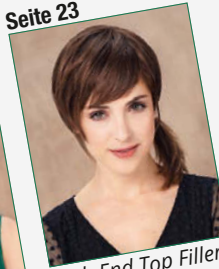
High End Top Filler Curly

Seite 23



High End Top Filler Long

Seite 23



High End Top Filler Straight

Seite 7



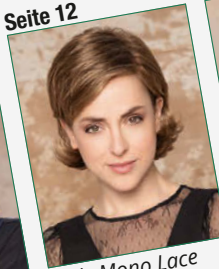
High End Vicky

Seite 7



High End Vicky Small

Seite 12



Lady Mono Lace Deluxe Volume

Seite 17



Nina Mono Lace Large

Seite 17



Nina Mono Lace Deluxe

Seite 17



Nina Mono Lace Deluxe Small

Seite 16



Power Mono Lace Deluxe

Seite 20



Society Mono Lace Long Deluxe

Seite 14



Tropical Mono Lace Deluxe Super

Seite 18



Zara Mono Lace Deluxe

Seite 18



Zara Mono Lace Deluxe Small

1001rooted
snow white rooted

14/88+8

High End Celine

(Größe/size ca. 52 - 53 cm)

*****+LF

305+root

							
12/14/26+12 dark ash blond rooted	12/23	14/26/24+12 light caramel rooted	14/88+8	23/22+14 champagne rooted	713	28/31/26 mango mix	133/131V flame aubergine
							
6+10%grey	salt&pepper	48/38root	38/light	305+root	51/60	1001rooted snow white rooted	

56/51-4+4
salt&pepper rooted

33/29/27+6
safran red rooted

High End Tonia Long ★★★★★★ +LF

G23/20+12
honey toast rooted

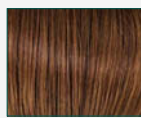




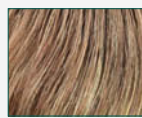
1B
black



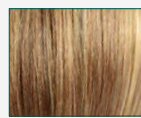
4/6
espresso mix



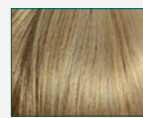
8/6/27
havana mix



10/16/27+10
bernstein rooted



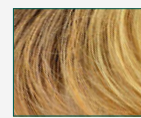
12/14/26+12
dark ash blond rooted



22/15-14
light caramel mix



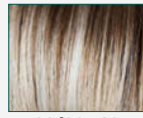
14/26+14



14/26/24+12
light caramel rooted



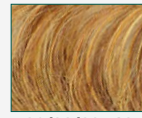
1001/22-20+14
ash blond rooted



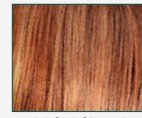
23/26+12
golden blond mix



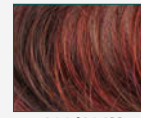
23/20
new swedish blond



26/28/30+12
gold browntoast rooted



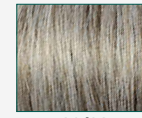
33/29/27+6
safran red rooted



133/131V
flame aubergine



salt&pepper



36/38



101/20+12
smoky grey



305K



1001rooted
snow white rooted



60

12/14/26+12
dark ash blond rooted

1001rooted
snow white rooted

23/26+12
golden blond mix

HIGH-END COMFORT COLLECTION

High End Vicky ★★★★★ +LF

1B (black), 4/6 (espresso mix), 8/6/27 (havana mix), 10/16/27+10 (bernstein rooted), 12/14/26+12 (dark ash blond rooted), 22/15-14 (light caramel mix), 14/26+14, 14/26/24+12 (light caramel rooted), 1001/22-20+14 (ash blond rooted), 23/26+12 (golden blond mix), 23/20 (new swedish blond), 26/28/30+12 (gold browntoast rooted), 33/29/27+6 (safran red rooted), 133-131V (flame aubergine), 101/20+12 (smoky grey), 1001rooted (snow white rooted)

High End Vicky Small ★★★★★ +LF (Größe/size ca. 52 - 53 cm)

4/6 (espresso mix), 8/6/27 (havana mix), 10/16/27+10 (bernstein rooted), 12/14/26+12 (dark ash blond rooted), 22/15-14 (light caramel mix), 14/26/24+12 (light caramel rooted), 1001/22-20+14 (ash blond rooted), 23/26+12 (golden blond mix), 23/20 (new swedish blond), 33/29/27+6 (safran red rooted), salt&pepper, 36/38, 305K, 1001rooted (snow white rooted), 60

High End Techno Vicky ★★★★★ +LF (from May 2019)

1B (black), 4/6 (espresso mix), 27/4-4, 8/6/27 (havana mix), 10/16/27+10 (bernstein rooted), 14/88+12, 23/26+12 (golden blond mix), 24/25/12+12, 33/130+4

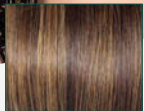
8/27/16+10

HIGH-END COMFORT COLLECTION

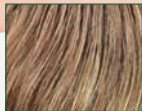
High End Como Lace Short ***** +LF



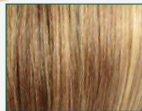
8/6/27
havana mix



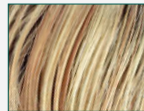
8/27/16+10



10/16/27+10
bernstein rooted



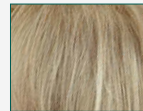
12/14/26+12
dark ash blond rooted



14/88+8



16/22/25



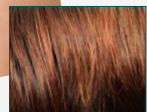
22/15H



6+10%grey



4/6
espresso mix



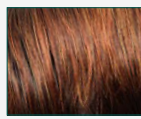
4/33/29+6



1B
black



4/6
espresso mix



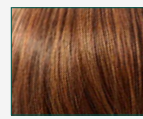
4/33/29+6



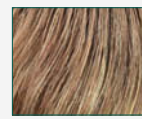
8/6/27
havana mix



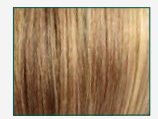
8/27/16+10



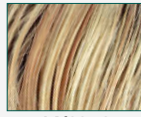
8/30/28



10/16/27+10
bernstein rooted



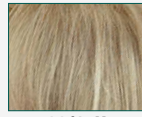
12/14/26+12
dark ash blond rooted



14/88+8



16/22/25



22/15H

High End Pauline Lace Short ★★★★★ +LF

8/6/27
havana mix



Catwalk Deluxe Super ★★★★★ +LF (Größe/size ca. 53 cm)

4/6 (espresso mix), 4/33/29+6, L8, 8/6/27 (havana mix), 8/27/light, 10/16/27+10 (bernstein rooted), 12/14/26+12 (dark ash blond rooted), 12/26+8, 14/26+14, 16/22/25, 16/23+12, 22/15H, 6+10%grey, salt&pepper, 56/51-4+4 (salt&pepper rooted), 66-4, 36/38, 60/56-51 (light salt&pepper grey), 61-38+12 (lightbrown grey rooted), 305K, 101/60/51, 1001rooted (snow white rooted), 60

Catwalk Deluxe Super Large ★★★★★ +LF (Größe/size ca. 57,5 cm)

4/6 (espresso mix), 4/33/29+6, 8/6/27 (havana mix), 10/16/27+10 (bernstein rooted), 14/26+14, 16/23+12, 22/15, 6+10%grey, smoky grey, 305K

High End Techno Catwalk ★★★★★ +LF (from May 2019)

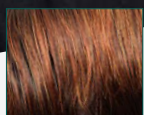
1B (black), 4/6 (espresso mix), 27/4-4, 8/6/27 (havana mix), 10/16/27+10 (bernstein rooted), 14/88+12, 23/26+12 (golden blond mix), 24/25/12+12, 33/130+4

16/23+12

14/26+14



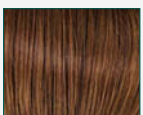
4/6
espresso mix



4/33/29+6



L8



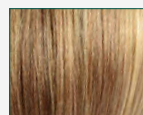
8/6/27
havana mix



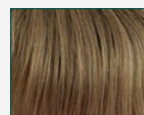
8/27/light



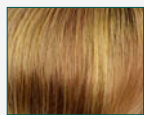
10/16/27+10
bernstein rooted



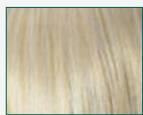
12/14/26+12
dark ash blond rooted



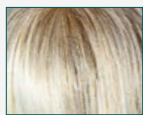
12/26+8



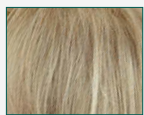
14/26+14



16/22/25



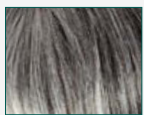
16/23+12



22/15H



6+10%grey



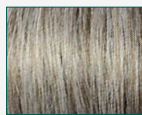
salt&pepper



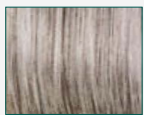
56/51-4+4
salt&pepper rooted



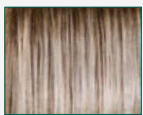
66-4



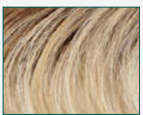
36/38



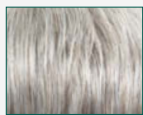
60/56-51
light salt&pepper
grey



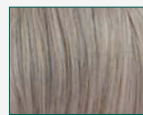
61-38+12
lightbrown grey
rooted



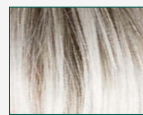
smoky grey



305K



101/60/51



1001rooted
snow white rooted



60



Ginger Mono Lace Deluxe ★★★★★ +LF
 1B (black), 4, 27/4-4, L8, 8/14, L12, 12/23, 14/26R, 20/25-14, 23/22+14 (champagne rooted), 26/25, 713, L22+4, 1001-23+14, 60/23, 29/33-6, 33/130/2, 29/133-130+33, 6+10%grey, 56/51-4+4 (salt&pepper rooted), 511T, 60/56-51 (light salt&pepper grey), 61-38+12 (lightbrown grey rooted), 38, 38/light, salt&pepper/light, 51/60, 56/58/36, 305K, 1001+6(root), 1001rooted (snow white rooted), 60

Ginger Mono Lace Deluxe Small ★★★★★ +LF (Größe/size ca. 52-53 cm)
 29/33-6, 33/130/2, 511T, 38, 51/60, 56/58/36, 305K, 60

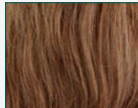
Ginger Mono Lace Deluxe Large ★★★★★ +LF (Größe/size ca. 57,5 cm)
 4, 27/4-4, L12, 12/14/26+12 (dark ash blond rooted), 12/23, 14/26/24+12 (light caramel rooted), 23/22+14 (champagne rooted), 713, 28/31/26 (mango mix), 133/131V (flame aubergine), 38/light, 56/58/36, 305K, 1001rooted (snow white rooted), 60

12/14/26+12
dark ash blond rooted

HIGH-END COMFORT COLLECTION



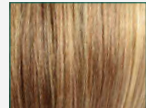
Lady Mono Lace Deluxe Volume ★★★★★★ +LF



8/30



10/16/27+10
berstein rooted



12/14/26+12
dark ash blond rooted



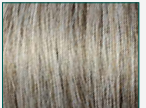
14/26+12



23/26+12



27/830+6



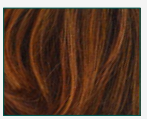
36/38



119



4/6
espresso mix



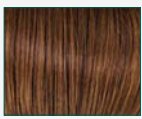
6/29/28+6



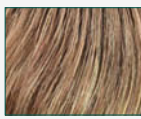
8/6/27
havana mix



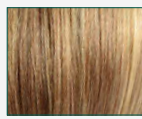
4/6
espresso mix



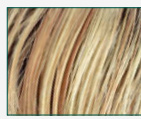
8/6/27
havana mix



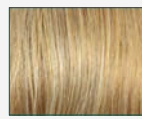
10/16/27+10
bernstein rooted



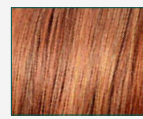
12/14/26+12
dark ash blond rooted



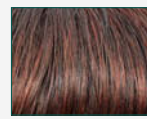
14/88+8



26/25



33/29/27+6
safran red rooted



33/130/2



GL36/38



305K

High End Sharon ★★★★★ +LF High End Sharon Large ★★★★★ +LF (Größe/size ca. 57,5 cm)

8/6/27
havana mix



12/14/26+12
dark ash blond
rooted



8/27/Light

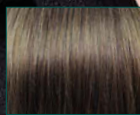
Tropical Mono Lace Deluxe Super ★★★★★★ +LF



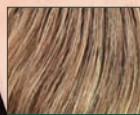
4/6
espresso mix



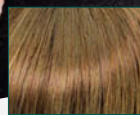
8/6/27
havana mix



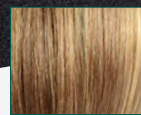
8/27/light



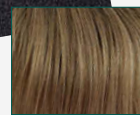
10/16/27+10
bernstein rooted



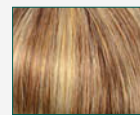
12/mix



12/14/26+12
dark ash blond rooted



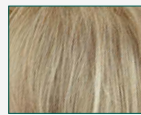
12/26+8



sandyblond



16/22/25



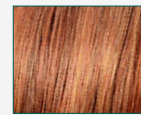
22/15H



23/20
new swedish blond



25/23-14+12



33/29/27+6
safran red rooted



6+10%grey



305K



60



1B



1B
black



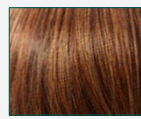
4/6
espresso mix



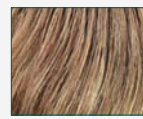
8/6/27
havana mix



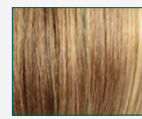
27/4-4



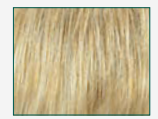
8/30/28



10/16/27+10
bernstein rooted



12/14/26+12
dark ash blond rooted



14/88+12



16/22/25

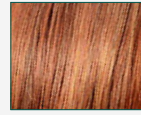


22/15-14
light caramel mix

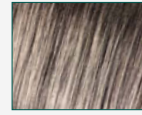


23/20

new swedish blond



33/29/27+6
safran red rooted



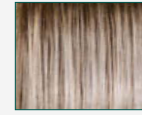
56/51-4+4

salt&pepper rooted



60/56-51

light salt&pepper
grey



61-38+12
lightbrown grey
rooted



60

High End Page ★★★★★★ +LF

33/29/27+6
safran red rooted



61-38+12
lightbrown grey
rooted



HIGH-END COMFORT COLLECTION

14/26+12



27/4-4



Power Mono Lace Deluxe ★★★★★ +LF



1B
black



4/6
espresso mix



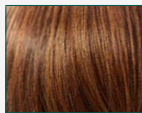
637T



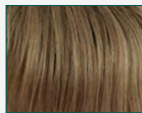
27/4-4



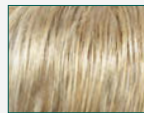
8/6/27
havana mix



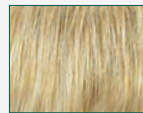
8/30/28*



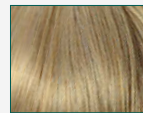
12/26+8



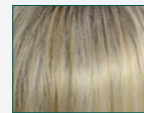
14/26+12



14/88+12



22/15-14

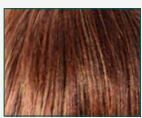


26/23+12
golden blond mix

*Solange Vorrat reicht!/While stocks last!



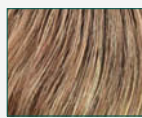
4/6
espresso mix



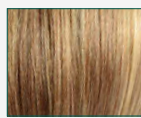
4/33/29+6



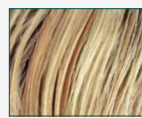
8/27/light



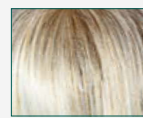
10/16/27+10
bernstein rooted



12/14/26+12
dark ash blond rooted



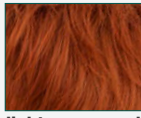
14/88+8



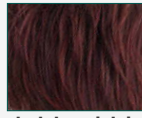
16/23+12



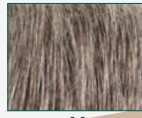
light champagne rooted



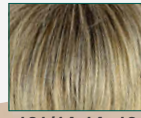
light orange red



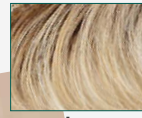
dark beaujolais



44



101/14-14+10



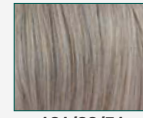
smoky grey



305K



60/44



101/60/51



12/14/26+12
dark ash blond
rooted



8/27/light



light champagne
rooted

Nina Mono Lace Deluxe ★★★★★ +LF

4/6 (espresso mix), 4/33/29+6, 8/27/light, 10/16/27+10 (bernstein rooted), 12/14/26+12 (dark ash blond rooted), 16/23+12, light champagne rooted, light orange red*, dark beaujolais, 101/14-14+10*, 305K, 60/44, 101/60/51

Nina Mono Deluxe Large ★★★★★ +LF (Größe/size ca.57,5 cm)

4/6 (espresso mix), 8/27/light, 10/16/27+10 (bernstein rooted), 12/14/26+12 (dark ash blond rooted), 14/88+8, 44*, smoky grey, 305K

Nina Mono Lace Deluxe Small ★★★★★ +LF (from April 2019)

4/6 (espresso mix), 4/33/29+6, 8/27/light, 10/16/27+10 (bernstein rooted), 12/14/26+12 (dark ash blond rooted), 14/88+8, light champagne rooted, smoky grey, 305K

*Solange Vorrat reicht!/While stocks last!

Zara Mono Lace Deluxe ★★★★★ +LF

1B (black), 4, 6, L8, 8/6/27 (havana mix), 10/16/27+10 (bernstein mix), L12, 14/88+8, L22+4, 25/23+12, orange red*, 33/130/2*, dark beaujolais, **spotlight red***, 34, 38, 38/light, salt&pepper, salt&pepper light, **101/14-14+12**, 305K, 60

Zara Mono Lace Deluxe Small ★★★★★ +LF

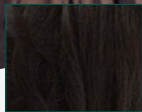
1B (black), 4*, 6, L8, 8/6/27 (havana mix), 10/16/27+10 (berstein rooted), L12, 14/88+8, L22+4, 25/23+12, orange red*, 33/130/2, dark beaujolais, spotlight red*, 34*, 38, 6+10%grey, salt&pepper, 101/14-14+12, 305K, 60 (Größe/size ca. 51 cm)

101/14-14+12

Spotlight Red*



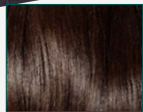
1B
black



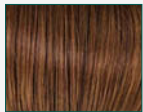
4



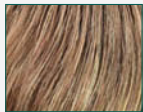
6



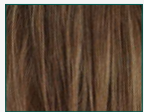
L8



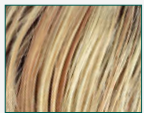
8/6/27
havana mix



10/16/27+10
bernstein rooted



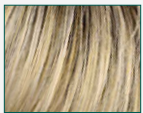
L12



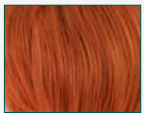
14/88+8



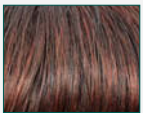
L22+4



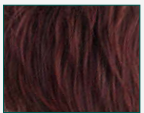
25/23+12



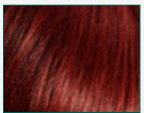
orange red



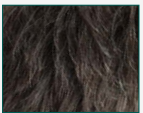
33/130/2



dark beaujolais



spotlight red



34



38



38/light



6+10%grey



salt&pepper



salt&pepper/light



101/14-14+12



305K

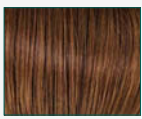


60

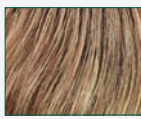
*Solange vorrat reicht!/While stocks last!



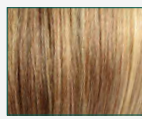
4/6
espresso mix



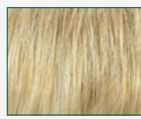
8/6/27
havana mix



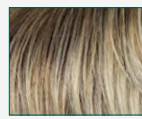
10/16/27+10
bernstein rooted



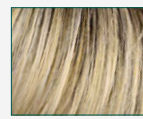
12/14/26+12
dark ash blond rooted



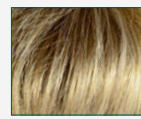
14/88+12



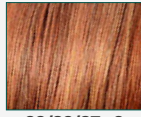
23H/20-20+12



25/23+12



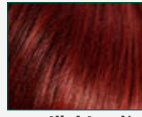
26/25+14



33/29/27+6
safran red rooted



33/130/2



spotlight red*



6+10%grey



38/light



salt&pepper/light



101/14-14+12



305K



60

High End Star ★★★★★ +LF

10/16/27+10
bernstein rooted



23H/20-20+12



HIGH-END COMFORT COLLECTION

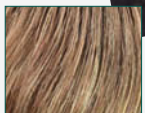
*Solange Vorrat reicht!/While stocks last!

38/48+8

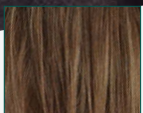
HIGH-END COMFORT COLLECTION

14/26+12

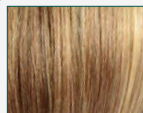
Society Mono Lace Long Deluxe ★★★★★ +LF



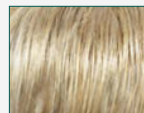
10/16/27+10
bernstein rooted



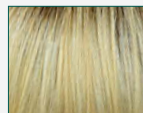
L12



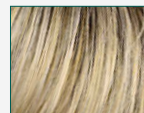
12/14/26+12
dark ash blond rooted



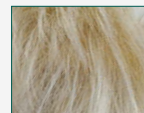
14/26+12



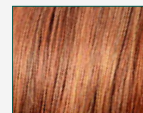
24/22+12



25/23+12



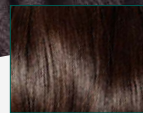
60/23



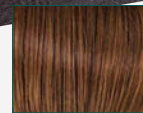
33/29/27+6
safran red rooted



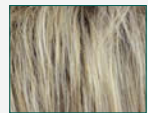
4/6
espresso mix



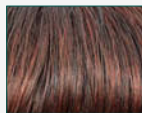
L8



8/6/27
havana mix



826+8



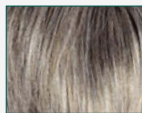
33/130/2



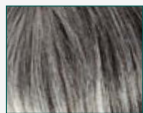
GL36/38



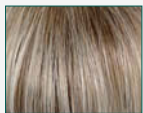
6+10%grey



38/48+8



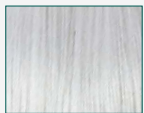
salt&pepper



101/14-14+12



305K



60



Shampoo Shampoo

DE

Shampoo:
Haarpflege für Perücken und
Toupets / 200 ml

GB

Shampoo:
hair care for wigs and
toupees / 200 ml

FR

Shampoo:
Produit de soins pour per-
ruques et toupets / 200 ml

IT

Shampoo:
per parrucche e toupet /
200 ml

ES

Champú:
Cuidado para el cabello de
pelucas y bisoños / 200 ml



Balsam Balm

DE

Balsam:
Haarpflege für Perücken und
Toupets - ohne ausspülen,
bleibt im Haar / 200 ml

GB

Balm:
hair care for wigs and tou-
pees - do not rinse / 200 ml

FR

Balsam:
Produit de soin pour
perruques et toupets - sans
rinçage, reste dans les
cheveux / 200 ml

IT

Balsamo:
per parrucche e toupet - non
sciacquare, resta nei capelli /
200 ml

ES

Bálsamo:
Cuidado para el cabello de
pelucas y bisoños - sin acla-
rar, se queda en el cabello /
200 ml



Conditioner Conditioner

DE

Conditioner:
Haarpflege für Perücken und
Toupets / 200 ml

GB

Conditioner:
hair care for wigs and
toupees / 200 ml

FR

Conditioner:
Produit de soin pour per-
ruques et toupets / 200 ml

IT

Conditioner:
per parrucche e toupet /
200 ml

ES

Acondicionador:
Cuidado para el cabello de
pelucas y bisoños / 200 ml



Haarspray Strong Haarspray Strong

DE

Haarspray Strong:
Styling für Perücken,
Zweithaar und Toupets /
200 ml

GB

Haarspray Strong:
styling for wigs and
toupees / 200 ml

FR

Haarspray Strong:
Styling pour perruques et
toupets / 200 ml

IT

Haarspray Strong:
lacca per parrucche e
toupet / 200 ml

ES

Spray de fijación fuerte:
Estilismos para pelucas,
postizos y bisoños / 200 ml

High End Top Filler Curly ***** +LF

(Größe/size: ca. 21 x 21 cm, Haarlänge/hair length: vorne/front ca. 8 cm, hinten/back ca. 11,5 cm)



Browns: 4/6, 8/6/27
Blonds: 10/16/27+10,
 12/14/26+12,
 14/26+12*, 14/88+12*,
 22/14+12*, 22/15H*,
 101/14-14+12*
Red: 33/130/2
Greys: 36/38,
 salt&pepper, 56/58/36,
 305K, 56, 60

High End Top Filler ***** +LF

(Größe/size: ca. 19 x 19 cm, Haarlänge/hair length: ca. 10 - 12 cm gestuft/layered)



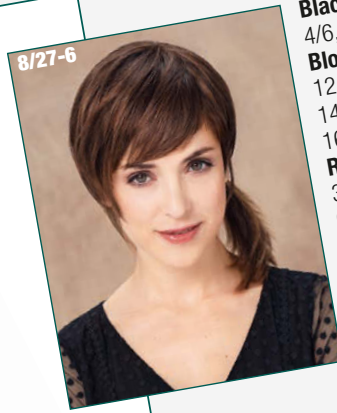
Black/Browns: 1B*, 4/6,
 8/6/27
Blonds: 10/16/27+10,
 12/14/26+12,
 14/88+12, 16/22/25,
 16/23+12, 22/15H*,
 101/14-14+12*
Reds: 33/29/27+6*,
 33/130/2
Greys: 36/38, salt&pepper,
 56/58/36, 305K, 60



*Solange Vorrat reicht!/While stocks last!

High End Top Filler Straight ***** +LF

(Größe/size: ca. 22 x 21 cm, Haarlänge/hair length: vorne/front ca. 14,5 cm, hinten/back ca. 12 cm)



Black/Browns: 1B, 4/6, 8/27-6
Blonds: 10/16/27+10, 12/14/26+12, 14/26+12, 14/88+12, 16/23+12, 16/22/25
Reds: 33/29/27+6, 33/130/2
Greys: 38/light, salt&pepper/light, 56/60, 60

High End Top Filler Long ***** +LF

(Größe/size: ca. 22 x 21 cm, Haarlänge/hair length: vorne/front ca. 15,5 cm, hinten/back ca. 20 cm)



Black/Browns: 1B, 4/6, 8/6/27
Blonds: 10/16/27+10, 12/14/26+12, 14/26+12*, 14/88+12, 16/23+12, 16/22/25
Reds: 33/29/27+6, 33/130/2
Greys: salt&pepper, 56/60



High End Techno Top Filler Ultra Long ***** +LF

(Größe/size: ca. 20 x 21 cm, Haarlänge/hair length: ca. 45)



Black/Browns: 1B, 4/6, 27/4-4, 8/6/27, 8/30/28
Blonds: 10/16/27+10, 14/88+12, 23/26+12, 24/25/12+12, 25R/27
Red: 33/130+4

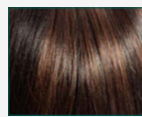
14/88+12



1B



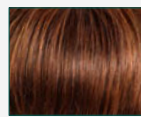
4/6



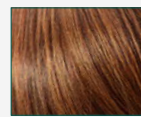
27/4-4



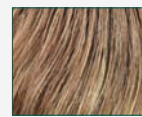
8/6/27



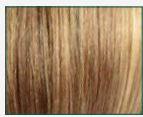
8/27-6



8/30/28



10/16/27+10



12/14/26+12



14/26+12



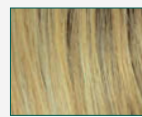
14/88+12



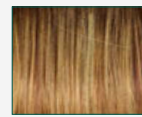
16/23+12



16/22/25



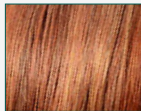
23/26+12



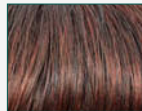
24/25/12+12



25R/27



33/29/27+6



33/130/2



33/130+4



38/light



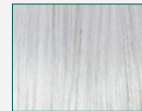
salt&pepper



salt&pepper/light



56/60



60

*Solange Vorrat reicht!/While stocks last!



MH
MAYER
HAIR
HAIR COLLECTION

Zweithaarkunst in Perfektion

SIMPLY THE BEST!

MAYER HAIR GmbH
Litzelsdorfer Straße 3 D-87700 Memmingen
Tel.: +49 (0) 8331 - 954 00 Fax: +49 (0) 8331 9540 - 34
info@gisela-mayer.com www.gisela-mayer.com