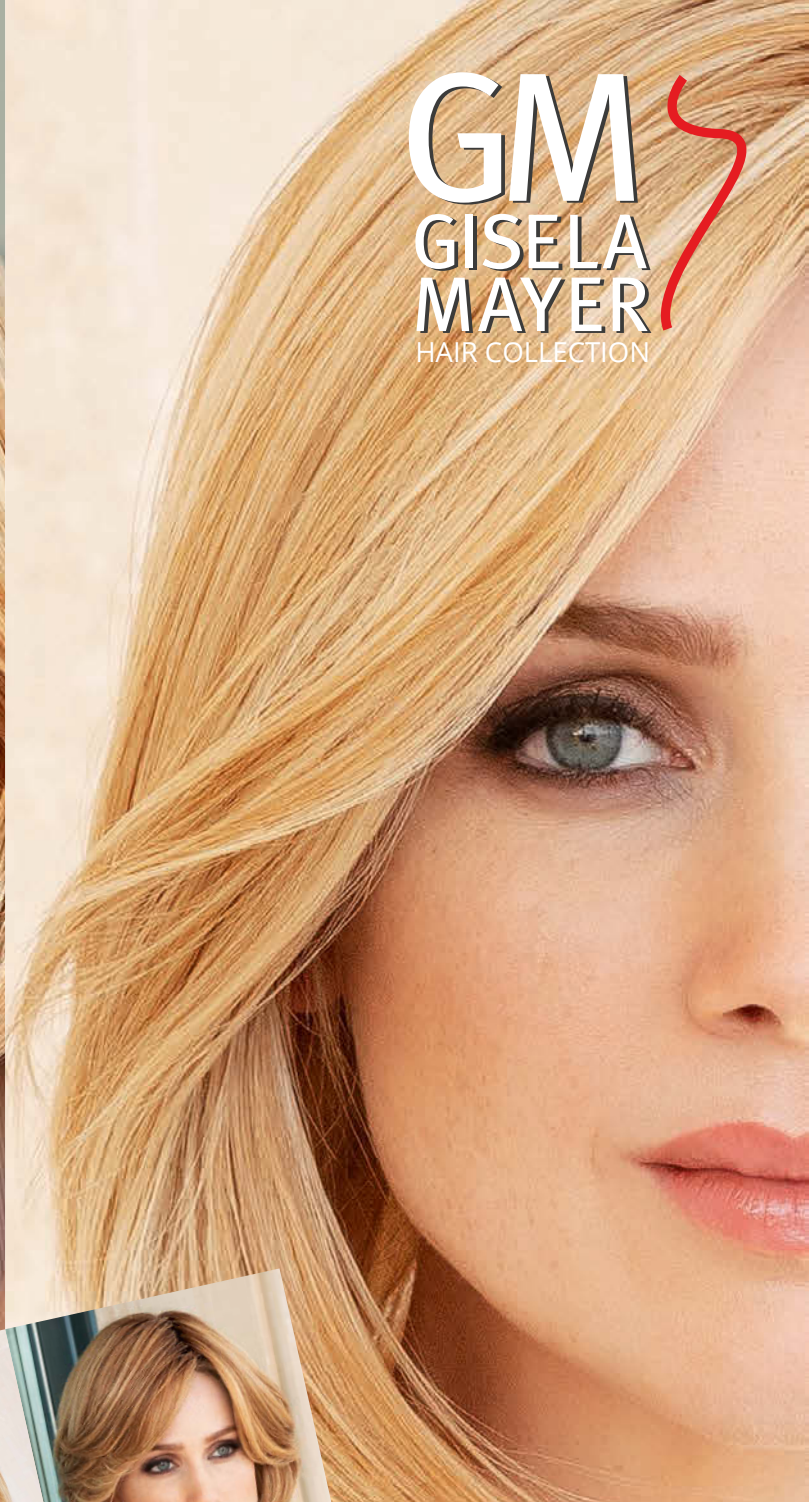


GM
GISELA
MAYER
HAIR COLLECTION



HUMAN HAIR **BOOK**
Gisela Mayer

2020



DE

Die Neuauflage des GISELA MAYER HUMAN HAIR BOOK präsentiert in sechs Abschnitten die exklusive und hochwertige Echthaar-Kollektion von Gisela Mayer.

Das Book beginnt mit der neuen PRIME COLLECTION, die angesagte "ready-to-wear" Modelle in natürlichen Farben und modernen Highlights präsentiert. Die perfekte Ergänzung zum bestehenden Sortiment, welche auch in „small- und large“ Varianten erhältlich sind. Im nächsten Abschnitt folgt die NEW COLLECTION, die durch feinste Euro-Mix Haare, sowie Remy-Haare in Balayage colors und neuen natürlichen Root-Colors Akzente setzt. In Folge stellen wir die bekannte LUXERY Human Hair COLLECTION vor und schließen dann den Perücken-Bereich mit der CLASSIC Human Hair Collection in einigen neuen Farben, die bisher im Classics Katalog zu finden waren, ab. Anschließend finden Sie alle HAIR SOLUTION Echthaar-Teile mit genauer Angabe von Haarlängen und Größen. Im Anschluss erwartet Sie CLIP IN HUMAN HAIR, sowie das frische Human Hair EXTENSIONS Programm von Gisela Mayer.

GB

The six segments of the GISELA MAYER HUMAN HAIR BOOK present a significant and modern human hair collection by Gisela Mayer.

I - The PRIME COLLECTION, ready-to-wear styles – modern cuts and natural highlighted colors. The perfect complement to our human hair range, also in small and large Versions. II - The NEW COLLECTION priority setting with finest Euro-Mix hair and Remy-Hair in new Balayage colorings as well as natural root-colors. III - The well known LUXERY HUMAN HAIR COLLECTION. IV - The CLASSIC HUMAN HAIR COLLECTION you used to find in the Classics Catalog, but with some newly added colors. V - HAIR SOLUTION showing all our human hair pieces with exact indication of hair length and measurements. VI - CLIP IN & EXTENSIONS HUMAN HAIR where you´ll find all human hair pieces and extensions to give your hair more volume and length.

FR

La nouvelle édition de notre GISELA MAYER HUMAN HAIR BOOK présente sous six volets la nouvelle collection de modèles en cheveux naturels de haute qualité avec de nouvelles coupes modernes.

Au début vous trouverez la nouvelle Prime Collection qui présente des modèles dans des couleurs naturelles avec des reflets modernes. Aussi disponibles en variantes small et large ! Il suit la NEW COLLECTION orientée vers les nouveautés avec de nouvelles couleurs avec effets racines et de nouveaux balayages dans des qualités de cheveux Remy et Euro-Mix, puis la collection LUXERY Human Hair Collection que vous connaissez bien , et pour clore le thème des chevelures, la CLASSIC Human Hair Collection que vous trouviez dans le catalogue Classic, avec une palette de coloris renouvelée. La quatrième partie concerne les compléments capillaires en cheveux naturels HAIR SOLUTIONS, avec en détail les dimensions et les longueurs des cheveux, et la cinquième partie reprend la programme des CLIPS IN HUMAN HAIR ainsi que les Human Hair EXTENSIONS.

IT

La nuova edizione GISELA MAYER HUMAN HAIR BOOK presenta in 6 parti l´esclusiva e l´alta qualità del capello vero di Gisela Mayer.

Il libro inizia con la nuova Collezione e presenta i modelli ready-to-wear con colori naturali e riflessi moderni. L´aggiunta perfetta alla gamma esistente sono anche i varianti in Small & Large. Il nuovo segue con la NEW COLLECTION, con finissimi capelli Euro-Mix e capelli Remy in nuovi colori con ricrescita o Balayage. Segue la conosciuta collezione LUXERY, la quale viene completata dalla collezione Human Hair del catalogo CLASSIC COLLECTION. Di seguito si trovano i parziali, sempre in capelli veri, del catalogo HAIR SOLUTION. Per finire si trovano la collezione CLIP IN HUMAN HAIR e HUMAN HAIR EXTENSIONS.

ES

La nueva edición de GISELA MAYER HUMAN HAIR BOOK presenta la exclusiva y de alta calidad colección de cabello natural de Gisela Mayer en seis secciones.

El catálogo comienza con la nueva PRIME COLLECTION, que presenta modelos de moda listos para usar, en colores naturales y reflejos modernos. El complemento perfecto para la gama existente, también en versiones de tamaño pequeñas y grandes. Después le sigue la NUEVA COLECCIÓN que establece nuevos acentos con el mejor cabello Euro-Mix, y el cabello Remy en nuevos colores Balayage y nuevos colores de raíz naturales. Continúa la conocida COLECCIÓN LUXERY de pelo humano y se completa en el área de pelucas con la colección de cabello natural del CLÁSICO Colección Hair con algunos colores recientemente agregados que anteriormente ya se encontraban en el catálogo de Classics. Para terminar encontrará todas las soluciones en piezas de cabello humano en el catálogo HAIR SOLUTION, con los detalles exactos de tamaños y longitudes del cabello; la parte 5 concluye con el programa CLIP IN HUMANHAIR, así como el programa Human Hair EXTENSIONS de Gisela Mayer.



Human Hair Prime COLLECTION Seite 4-11

Human Hair New COLLECTION Seite 12-27

Human Hair Luxery COLLECTION Seite 28-41

Human Hair Classic COLLECTION Seite 42-63

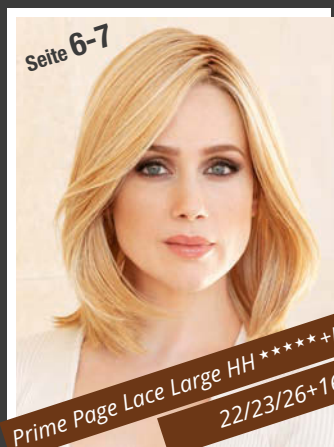
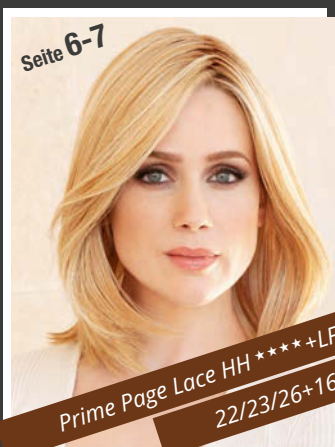
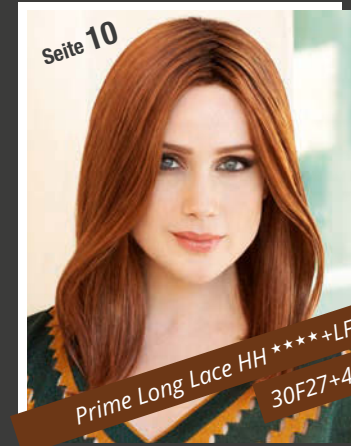
Hair Solutions - Human Hair Seite 66-69

Human Hair Extensions und Clips Seite 70-74



HUMAN HAIR Prime COLLECTION

Echthaar



**HUMAN
HAIR PRIME
COLLECTION**
Echthaar

Prime Page Lace HH ★★★★★+LF

100% Echthaar/human hair / Haarlänge/hair length: ca. 38 cm

L4, L6, 637T, L12, 2/27/9H+8, 7/27/22+8, 10/16/27+10,
10/20/27+6, 14/88+8, **20/19/22+10**, 22/23/26+16

Prime Page Lace Large HH ★★★★★+LF

100% Echthaar/human hair / Haarlänge/hair length: ca. 38 cm

L4, L6, L12, 2/27/9H+8, 7/27/22+8, 10/16/27+10, 14/88+8, 22/23/26+16

Prime Page Lace Small HH ★★★★★+LF

100% Echthaar/human hair / Haarlänge/hair length: ca. 38 cm

L4, L6, L12, 2/27/9H+8, 7/27/22+8, 10/16/27+10, 14/88+8, 22/23/26+16

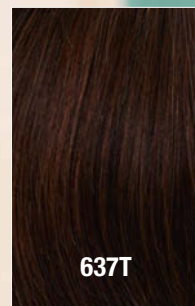
20/19/22+10



L4



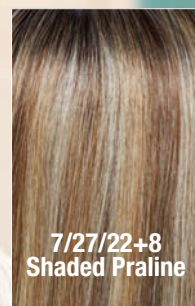
L6



637T



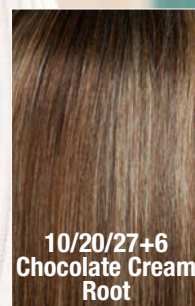
2/27/9H+8
Shaded Mocha



7/27/22+8
Shaded Praline



10/16/27+10



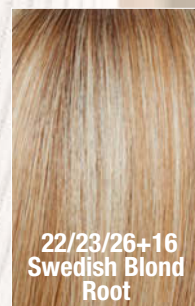
10/20/27+6
Chocolate Cream
Root



14/88+8



Foto
20/19/22+10
Danish Blond
Root



22/23/26+16
Swedish Blond
Root

20/19/22+10

1B

L4

L6

637T

L12

2/27/9H+8
Shaded Mocha7/27/22+8
Shaded Praline

10/16/27+10

10/20/27+6
Chocolate Cream
Root

14/88+8

Foto
20/19/22+10
Danish Blond
Root22/23/26+16
Swedish Blond
Root

Prime Bob Lace HH ★★★★★+LF

100% Echthaar/human hair / Haarlänge/hair length: ca. 28 cm

1B, L4, L6, 637T, L12, 2/27/9H+8, 7/27/22+8, 10/16/27+10, 10/20/27+6, 14/88+8,
20/19/22+10, 22/23/26+16

Prime Bob Lace Small HH ★★★★★+LF

100% Echthaar/human hair / Haarlänge/hair length: ca. 28 cm

1B, L4, L6, 637T, L12, 10/16/27+10, 10/20/27+6, 14/88+8, 20/19/22+10, 22/23/26+16

HUMAN HAIR PRIME COLLECTION

Echthaar

10/20/27+6

L4

L6

637T

L12

10/16/27+10

Foto 10/20/27+6
Chocolate Cream
Root

20/19/22+10
Danish Blond
Root

22/23/26+16
Swedish Blond
Root

30F27+4

Prime Lady Lace HH ★★★★★+LF

100% Echthaar/human hair / Haarlänge/hair length: ca. 30 cm

L4, L6, 637T, L12, 10/16/27+10, **10/20/27+6**, 20/19/22+10, 22/23/26+16, 30F27+4

Prime Lady Large Lace HH ★★★★★+LF

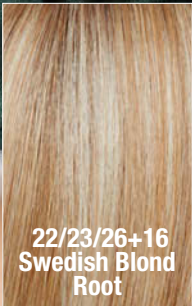
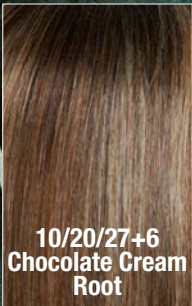
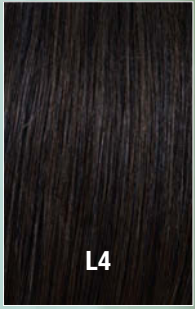
100% Echthaar/human hair / Haarlänge/hair length: ca. 30 cm

L4, L6, 637T, L12, 10/16/27+10, 10/20/27+6, 20/19/22+10, 22/23/26+16, 30F27+4

HUMAN HAIR PRIME COLLECTION

Echthaar

30F27+4



Prime Long Lace HH ★★★★★+LF

100% Echthaar/human hair / Haarlänge/hair length: ca. 40 cm



15/26



L4



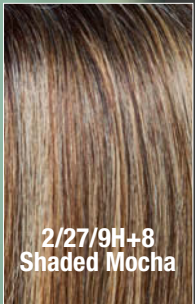
L6



637T



L12



2/27/9H+8
Shaded Mocha



10/16/27+10
Chocolate Cream
Root



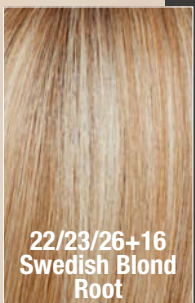
10/20/27+6



Foto 15/26



20/19/22+10
Danish Blond
Root



22/23/26+16
Swedish Blond
Root



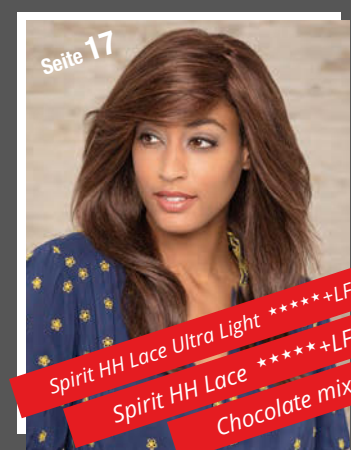
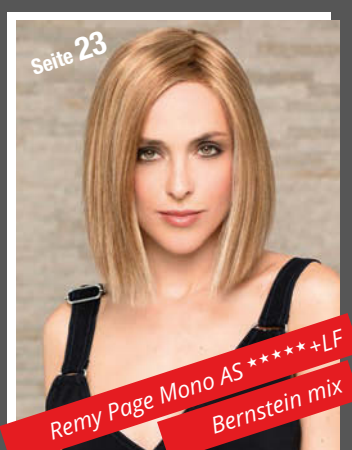
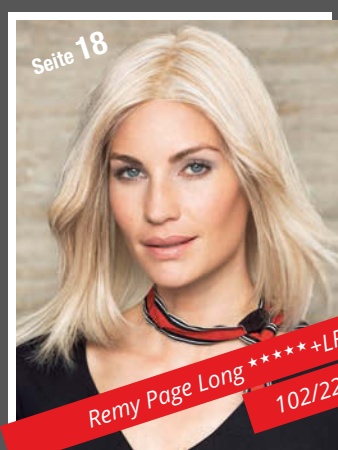
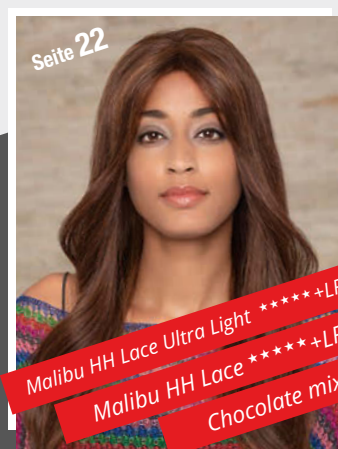
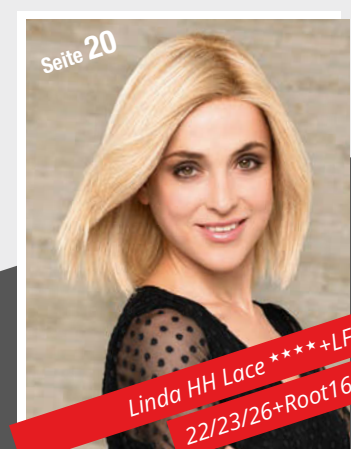
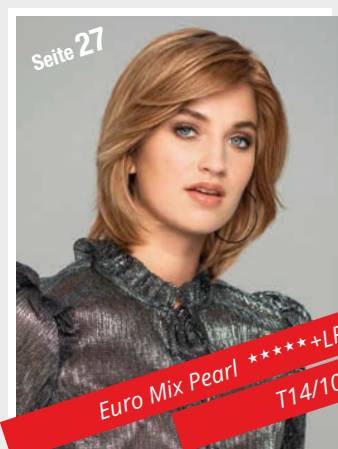
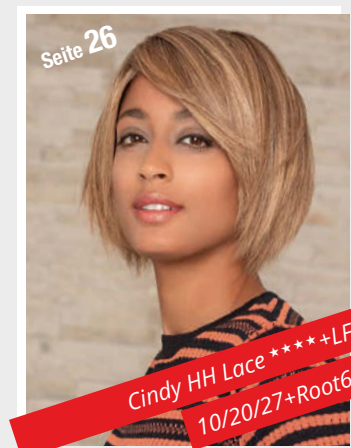
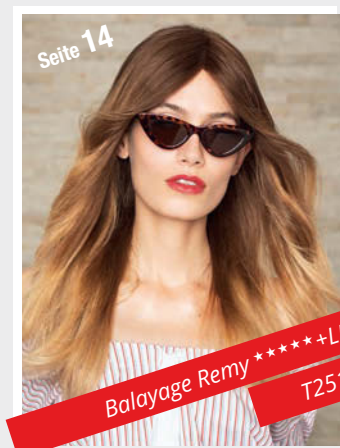
Prime Short Lace HH ★★★★★ +LF

100% Echthaar/human hair / Haarlänge/hair length: ca. 28 cm



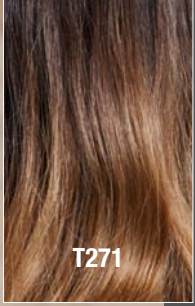
HUMAN HAIR NEW COLLECTION

Echthaar

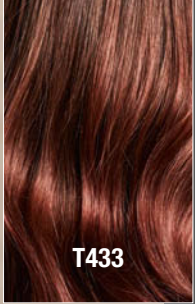


**HUMAN
HAIR NEW
COLLECTION**
Echthaar

T251



T271



T433



Foto T251



T261



T816



T12/24



Balayage Remy ★★★★★+LF

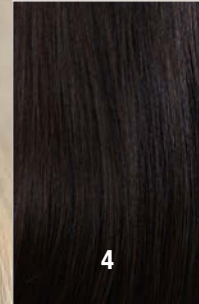
100% Remy-Echthaar/Remy-human hair
Haarlänge/hair length: ca. 48 cm



14/16T



1B



4



6



R8-25



12/14/24
mit/with 6 Root



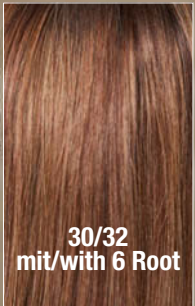
Foto 14/16T



120
mit/with 8 Root



Bernstein mix



30/32
mit/with 6 Root



Remy Power AS (antislippery) ★★★★★ +LF
100% Remy-Echthaar/Remy-human hair / Haarlänge: ca 63 cm

Chocolate mix

Espresso mix

Dark chocolate mix *

Foto Chocolate mix

Chestnut mix

Bernstein mix

Champagne rooted

Sandy blond rooted

Nature blond mix

Emotion HH Lace ★★★★★+LF

100% Echthaar/human hair / Haarlänge/hair length: ca.53 cm

Emotion HH Lace - Ultra Light ★★★★★+LF

(Solange Vorrat reicht/While stocks last)

100% Echthaar/human hair / Haarlänge/hair length: ca.53 cm

* nur bei Emotion HH Lace

HUMAN HAIR NEW COLLECTION

Echthaar

Chocolate mix

Espresso mix

Dark chocolate mix *

Foto Chocolate mix

Chestnut mix

Bernstein mix

Champagne rooted

Sandy blond rooted

Nature blond mix *

Spirit HH Lace ★★★★★+LF

100% Echthaar/human hair / Haarlänge/hair length: ca. 53 cm

Spirit HH Lace - Ultra Light ★★★★★+LF

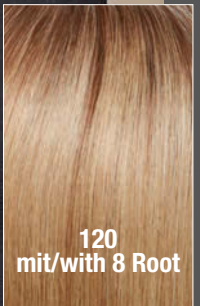
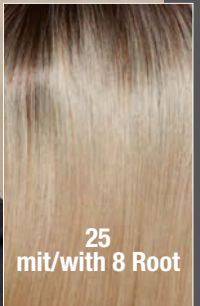
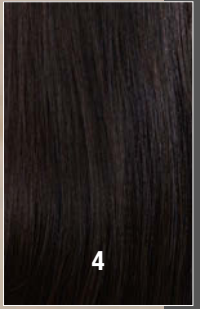
(Solange Vorrat reicht/While stocks last)

100% Echthaar/human hair / Haarlänge/hair length: ca. 53 cm

* nur bei Spirit HH Lace

HUMAN HAIR NEW COLLECTION
Echthaar

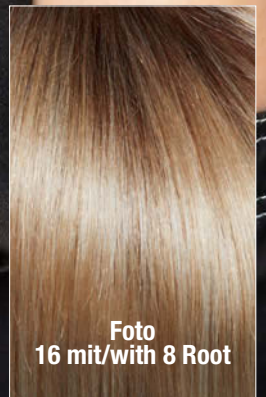
102/22



Remy Page Long ★★★★★+LF

100% Echthaar/human hair / Haarlänge/hair length: ca. 33 cm

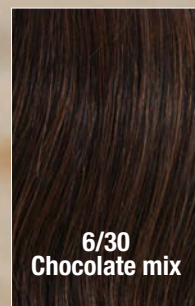
16 mit/with 8 Root



Euro Mix Star ★★★★★+LF

100% Echthaar/human hair / Haarlänge/hair length ca. 27 cm

22/23/26 mit/with 16 Root
Swedish blond rooted



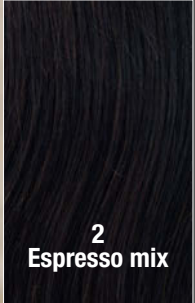
Linda HH Lace ★★★★★+LF

100% Echthaar/human hair / Haarlänge/hair length: ca. 34 cm

HUMAN HAIR NEW COLLECTION

Echthaar

20/19/22 mit/with 10 Root Danish blond rooted



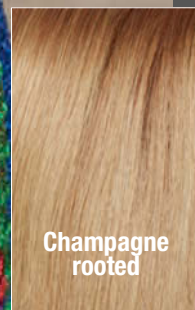
Nadia HH Lace ★★★★★+LF

100% Echthaar/human hair / Haarlänge/hair length: ca. 29 cm

HUMAN HAIR NEW COLLECTION

Echthaar

Chocolate mix



Malibu HH Lace ★★★★★+LF

100% Echthaar/human hair / Haarlänge/hair length: ca. 58 cm

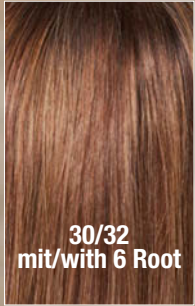
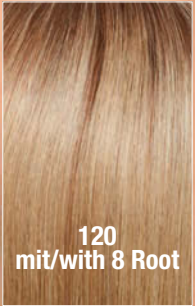
Malibu HH Lace - Ultra Light ★★★★★+LF

(Solange Vorrat reicht/While stocks last)

100% Echthaar/human hair / Haarlänge/hair length: ca. 58 cm

* nur bei Malibu HH Lace

Bernstein mix



Remy Page Mono AS (antislippery) ★★★★★ +LF
 100% Echthaar/human hair / Haarlänge/hair length ca 32 cm

* Solange Vorrat reicht/While stocks last!

Perücke mit E-Styler verändert
different Look with E-Styler

637T



1B



L4 *



L6



Foto 637T



L831



10/20/27
mit/with 6 Root
Chocolate cream
rooted



12/25/27
mit/with 8 Root
Honey Mix Root



16/24L+23



20/19/22 *
mit/with 10 Root
Danish blond
rooted



22/23/26
mit/with 16 Root
Swedish blond
rooted



Caramel mix

New Exclusiv Echthaar ★★★★★

100% Echthaar/human hair / Haarlänge/hair length ca 54 cm

* Solange Vorrat reicht / while stocks last

HUMAN HAIR **NEW** COLLECTION

Echthaar

L4



1B



Foto L4



L6



637T



L831



10/20/27
mit/with 6 Root
Chocolate cream
rooted



12/25/27
mit/with 8 Root
Honey Mix Root



16/24L+23



20/19/22
mit/with 10 Root
Danish blond
rooted



22/23/26
mit/with 16 Root
Swedish blond
rooted



Caramel mix



New Jennifer Echthaar ★★★★★

100% Echthaar/human hair / Haarlänge/hair length: ca. 49 cm

HUMAN HAIR NEW COLLECTION

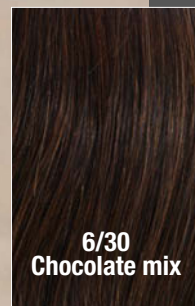
Echthaar



10/20/27 mit/with 6 Root Chocolate cream rooted



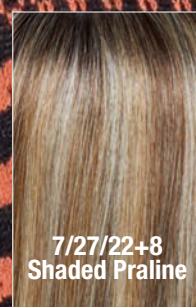
2 Espresso mix



6/30 Chocolate mix



2/27/9H+8 Shaded Mocha



7/27/22+8 Shaded Praline



Foto 10/20/27 mit/with 6 Root Chocolate cream rooted



20/19/22 mit/with 10 Root Danish blond rooted



22/23/26 mit/with 16 Root Swedish blond rooted



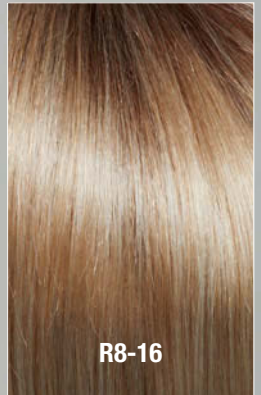
Cindy HH Lace ★★★★★+LF

100% Echthaar/human hair / Haarlänge/hair length: ca. 27 cm

T14/10



6



R8-16



12/14



Foto T14/10

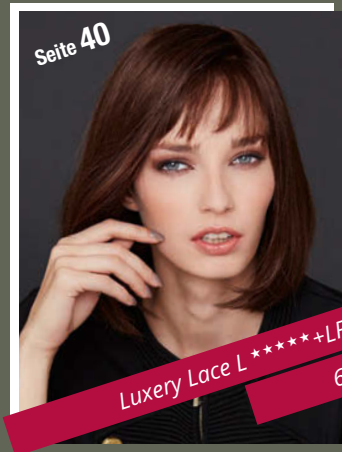
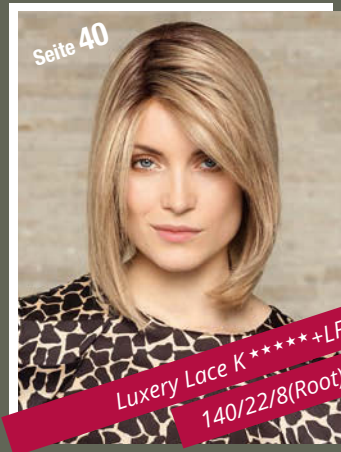
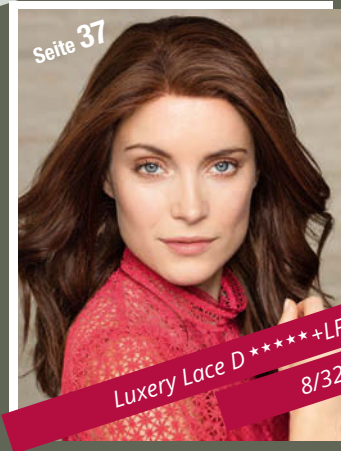
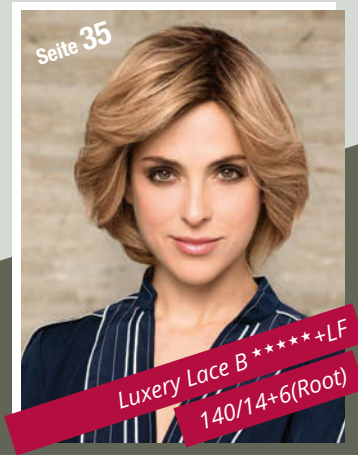
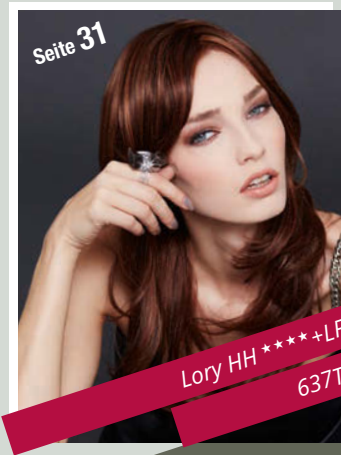
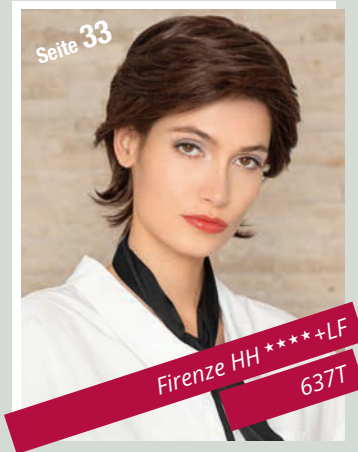
Euro Mix Pearl ★★★★★+LF

100% Echthaar/human hair / Haarlänge/hair length ca. 30 cm



HUMAN HAIR LUXERY COLLECTION

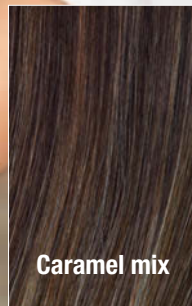
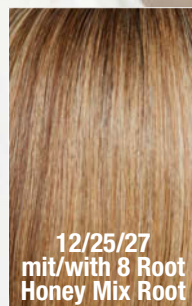
Echthaar



14/26L+12

HUMAN HAIR LUXERY COLLECTION

Echthaar



Debbie HH ★★★★★+LF

100% Echthaar/human hair / Haarlänge/hair length: ca. 52 cm

* Solange Vorrat reicht / while stocks last

16/24L+23



Lory HH ★★★★★+LF

100% Echthaar/human hair / Haarlänge/hair length: ca. 51 cm

637T



Silver HH ★★★★★+LF

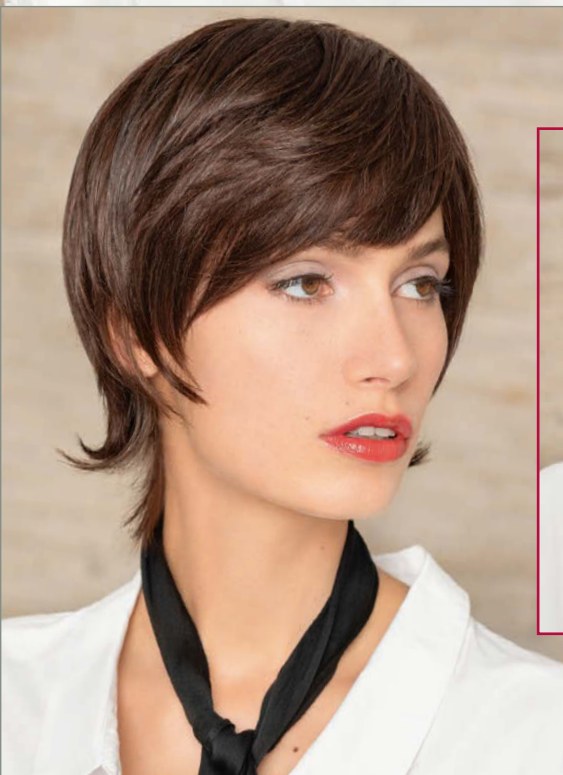
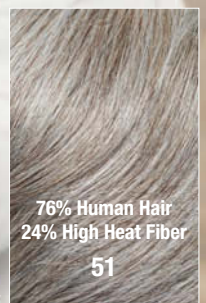
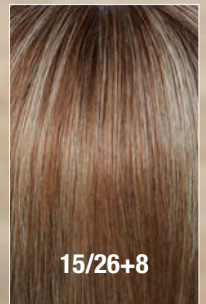
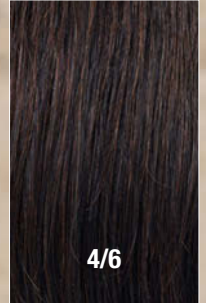
(Solange Vorrat reicht/While stocks last)

100% Echthaar/human hair / Haarlänge/hair length: ca. 40 cm

HUMAN HAIR LUXURY COLLECTION

Echthaar

637T



Firenze HH ★★★★★+LF

100% Echthaar/human hair / Haarlänge/hair length: ca. 31 cm

* Solange Vorrat reicht/While stocks last!

HUMAN HAIR LUXERY COLLECTION

Echthaar

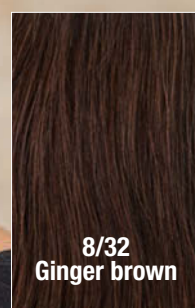
18/22+6(Root)
Sunny ash frost



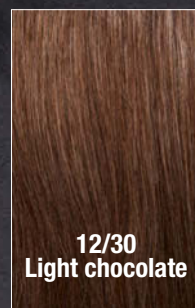
4
Cappuccino



6
Dark chocolate



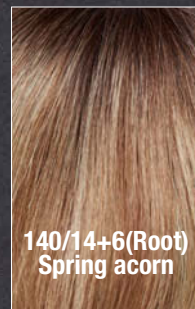
8/32
Ginger brown



12/30
Light chocolate



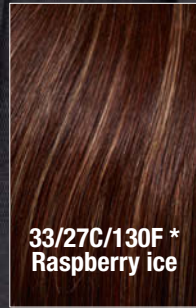
Foto
18/22+6(Root)
Sunny ash frost



140/14+6(Root)
Spring acorn



140/22+6(Root)
Sunshine gold



33/27C/130F *
Raspberry ice



140/22
Gold blonde

Luxery Lace A ★★★★★+LF

100% Echthaar/human hair / Haarlänge/hair length: ca. 30 cm

* Solange Vorrat reicht/While stocks last!

140/14+6(Root)
Spring acorn



4
Cappuccino



6
Dark chocolate



Foto 10/6/8
Cafe late



12/30
Light chocolate



Foto
140/14+6(Root)
Spring acorn



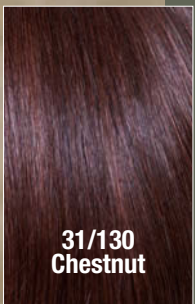
18/22+6(Root)
Sunny ash frost



140/22+6(Root)
Sunshine gold



140/22
Gold blonde



31/130
Chestnut



10/6/8
Cafe late

10/6/8
Cafe late



Luxery Lace B ★★★★★+LF

100% Echthaar/human hair / Haarlänge/hair length: ca. 33 cm

140/22+6(Root)
Sunshine gold



Luxery Lace C ★★★★★+LF

100% Echthaar/human hair / Haarlänge/hair length: ca. 40 cm

* Solange Vorrat reicht / while stocks last

HUMAN HAIR LUXERY COLLECTION

Echthaar

8/32
Ginger brown



Luxery Lace D ★★★★★+LF

100% Echthaar/human hair / Haarlänge/hair length: ca. 45 cm

* Solange Vorrat reicht/While stocks last!

HUMAN HAIR LUXERY COLLECTION

Echthaar



4
Cappuccino



6
Dark chocolate



8/32
Ginger brown

140/14+6(Root)
Spring acorn



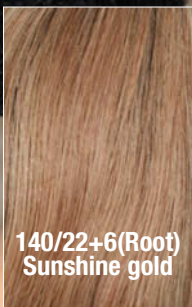
12/30
Light chocolate



Foto
140/14+6(Root)
Spring acorn



18/22+6(Root)
Sunny ash frost



140/22+6(Root)
Sunshine gold



140/22
Gold blonde



31/130
Chestnut



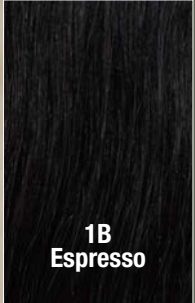
12/30
Light chocolate

Luxery Lace E ★★★★★+LF

100% Echthaar/human hair / Haarlänge/hair length: ca. 60 cm



140/22
Gold blonde



1B
Espresso



4
Cappuccino



6
Dark chocolate



140/14/8(Root)
Spring acorn
twist



140/14
Spring honey



140/22/8(Root)
Ginger blonde
twist



Foto 140/22
Gold blonde



Luxery Lace F★★★★+LF

(Solange Vorrat reicht/While stocks last)

100% Echthaar/human hair / Haarlänge/hair length: ca. 47 cm

140/22/8(Root)
Ginger blonde twist

4
Cappuccino

6
Dark chocolate

T6/8/28
Marble brown
frosted

8/32 *
Ginger brown

12/30
Light chocolate

T613/27
Wheat blonde

140/14/8(Root)
Spring acorn
twist

Foto
140/22/8(Root)
Ginger blonde
twist

140/22 *
Gold blonde

6

Luxery Lace L ★★★★★+LF

100% Echthaar/human hair
1B, 4*, 6, 6/8/28*, 8/32, 12/30, 14/22,
140/14/8Root, 140/22/8Root

Luxery Lace K ★★★★★+LF

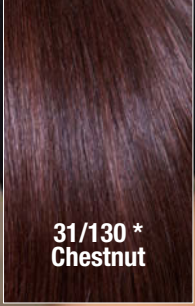
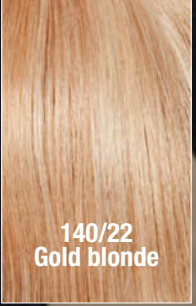
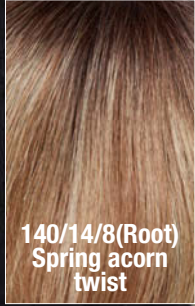
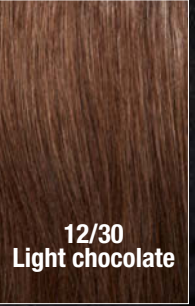
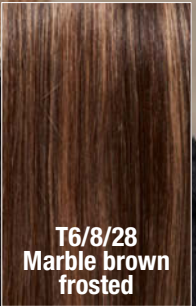
100% Echthaar/human hair / Haarlänge/hair length: ca. 38 cm

* Solange Vorrat reicht / while stocks last

HUMAN HAIR LUXERY COLLECTION

Echthaar

140/22/8(Root)
Ginger blonde twist



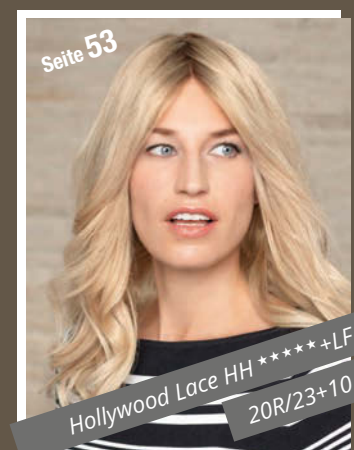
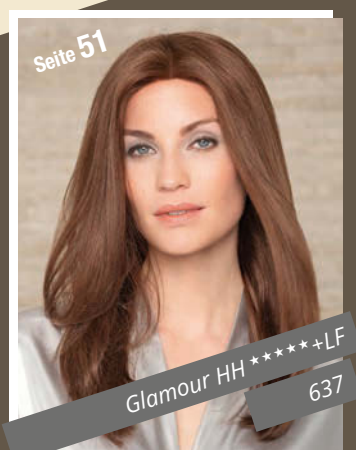
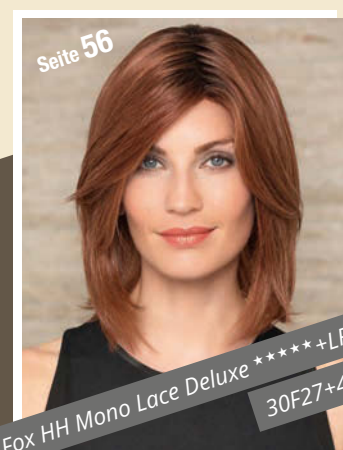
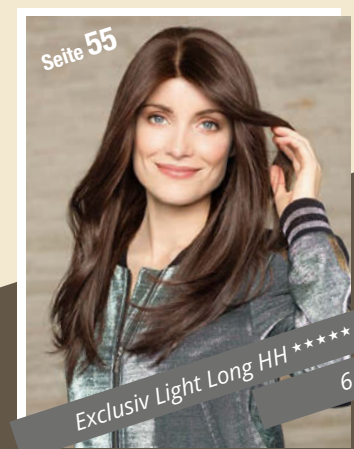
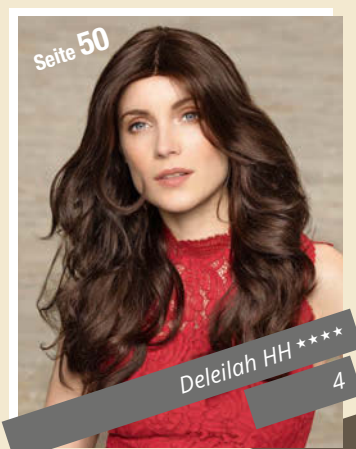
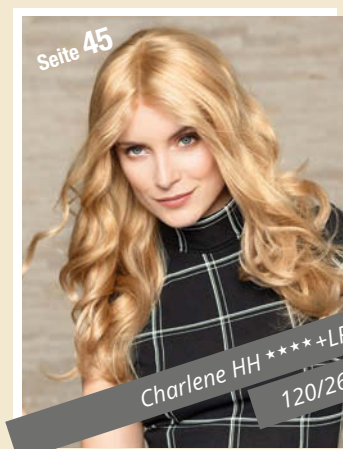
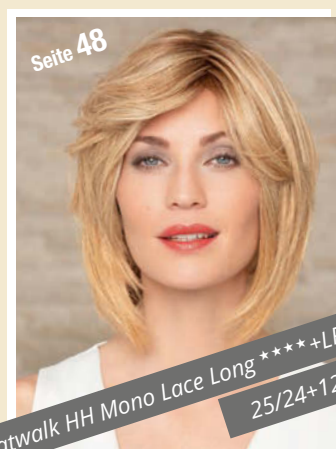
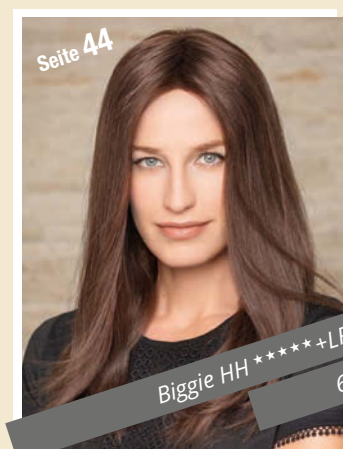
Luxery Lace H ★★★★★+LF

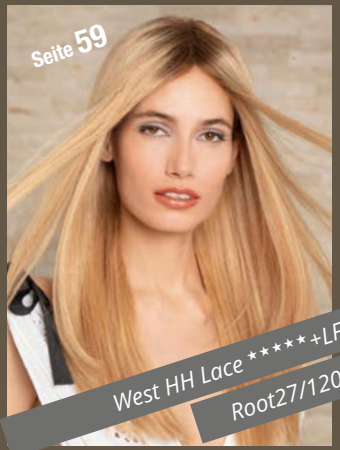
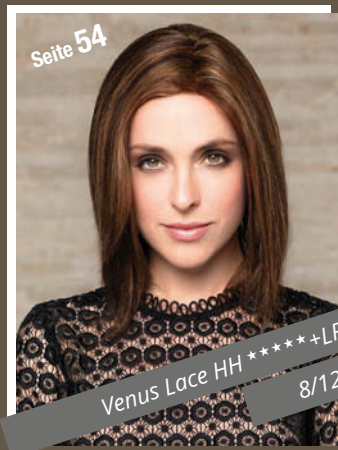
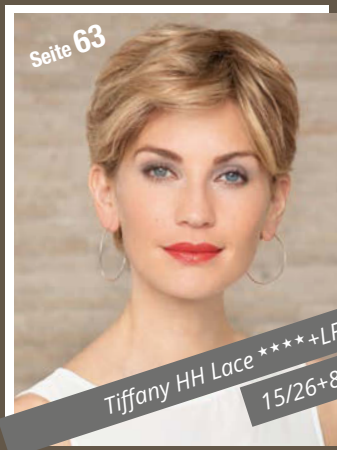
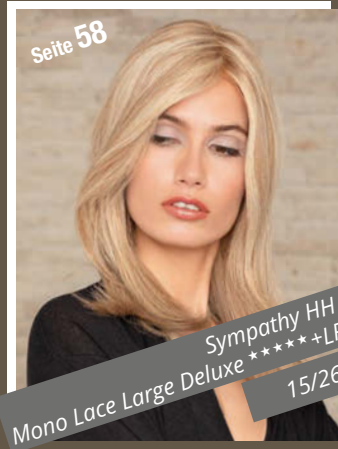
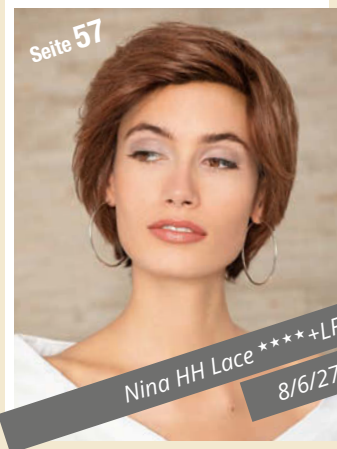
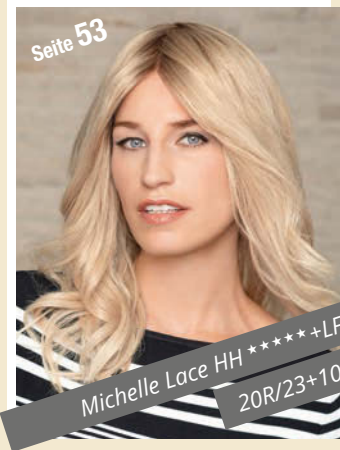
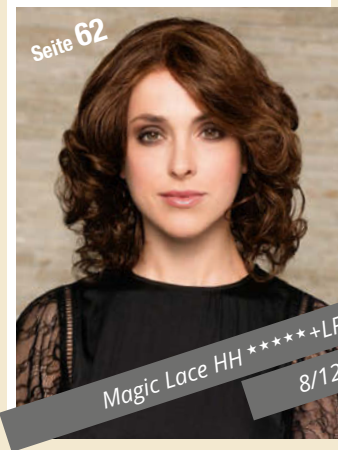
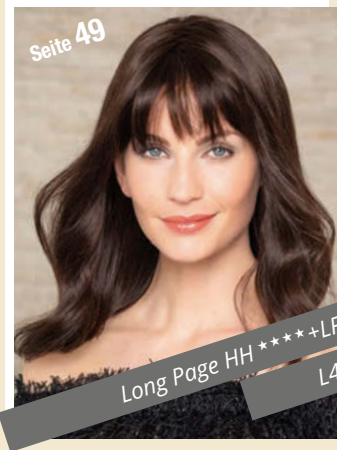
100% Echthaar/human hair / Haarlänge/hair length: ca. 32 cm

* Solange Vorrat reicht/While stocks last!

HUMAN HAIR CLASSIC COLLECTION

Echthaar





HUMAN HAIR CLASSIC COLLECTION

Echthaar

6



Biggie HH ★★★★★+LF

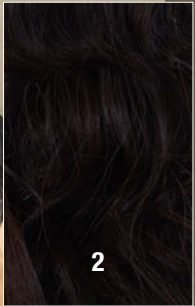
100% Echthaar/human hair
Größe/size ca. 57 cm / Haarlänge/hair length ca. 45 cm



120/26



1B



2



4



6



637



8



12/14



Foto 120/26



27/14 *



30/32

Charlene HH ★★★★★+LF

100% Echthaar/human hair

Größe/size ca. 56 cm / Haarlänge/hair length ca. 50 cm gestuft/layered

* Solange Vorrat reicht/While stocks last!

8/12



2/4



4/6



Foto 8/12



12/14/16



Foto 22/26/16



22/26/16

Brigitte Lace HH ★★★★★+LF

100% Echthaar/human hair / Haarlänge/hair length ca. 18 cm

HUMAN HAIR CLASSIC COLLECTION

Echthaar

8



Celine Lace HH ★★★★★+LF

100% Echthaar/human hair / Haarlänge/hair length ca. 45 cm

HUMAN HAIR CLASSIC COLLECTION
Echthaar

25/24+12



L4*



L6



L831



10/16/27+10



16/24L+23



Foto 25/24+12



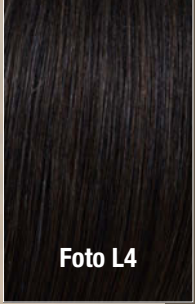
Catwalk HH Mono Lace Long ★★★★★ +LF

100% Echthaar/human hair

Größe/size ca. 54 cm / Haarlänge/hair length ca. 30 cm gestuft/layered

* Solange Vorrat reicht / while stocks last

L4



Long Page HH ★★★★★+LF

100% Echthaar/human hair / Haarlänge/hair length: ca. 40 cm

* Solange Vorrat reicht/While stocks last!

HUMAN HAIR CLASSIC COLLECTION

Echthaar

4



2*



Foto 4



6



637



8



12/14



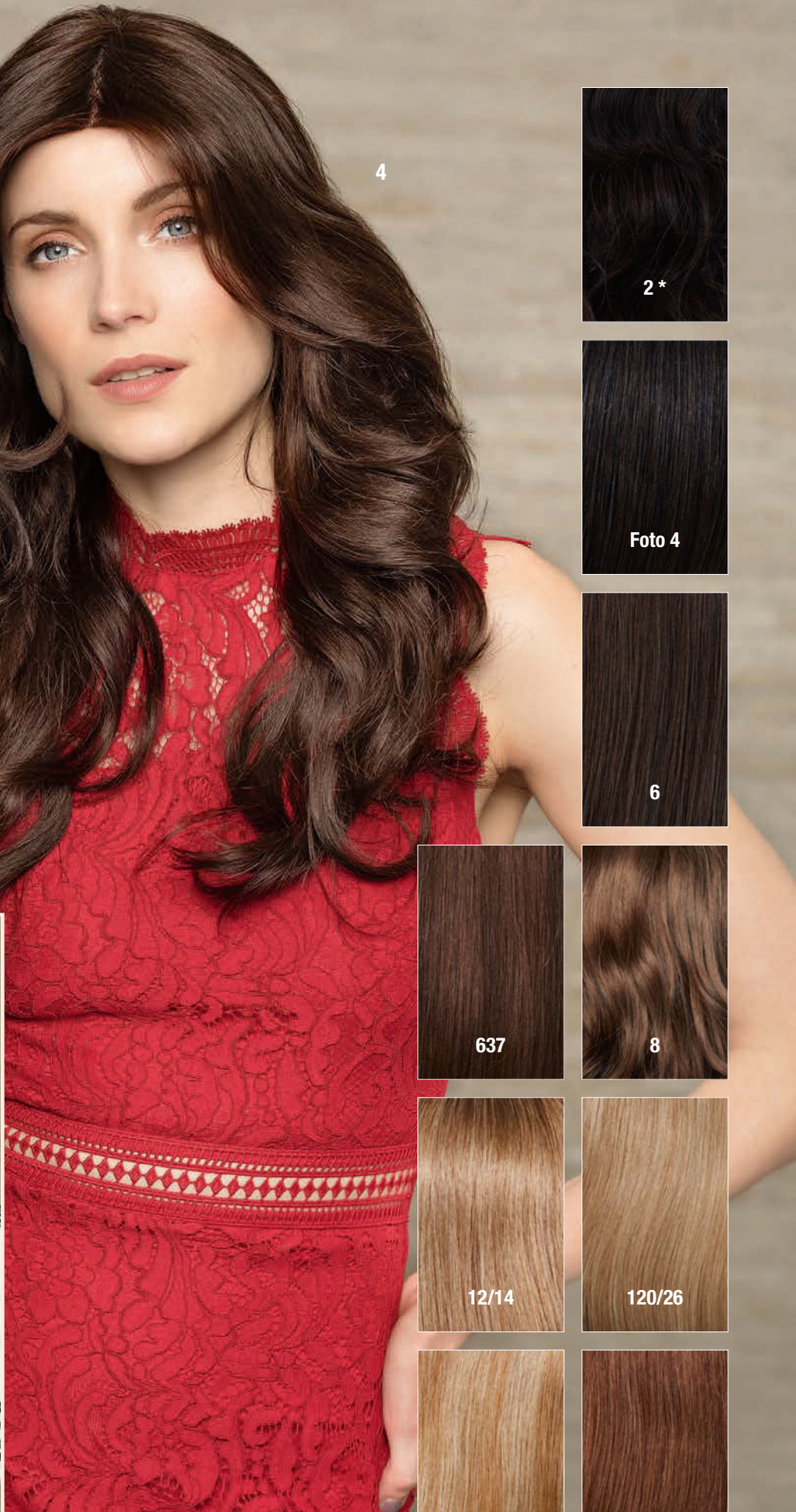
120/26



27/14



30/32



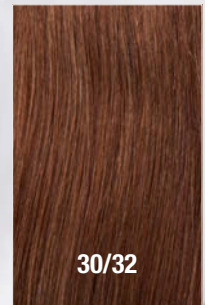
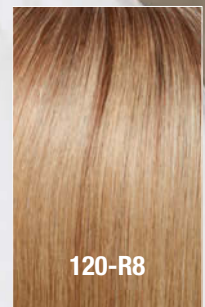
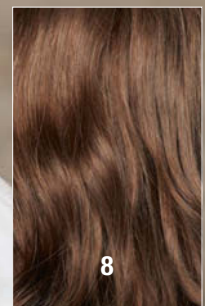
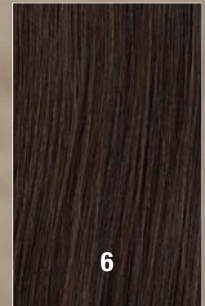
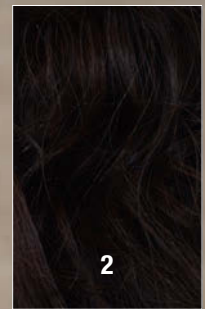
Deleilah HH ★★★★★

100% Echthaar/human hair

Größe/size ca. 56 cm / Haarlänge/hair length ca. 50 cm gestuft/layered

* Solange Vorrat reicht / while stocks last

637



Glamour HH ★★★★★+LF

100% Echthaar/human hair
Größe/size ca. 54 cm / Haarlänge/hair length ca. 45 cm

1B, 2, 4, 6, 637, 8, 12/14*, 120/26, 27/14, 30/32

Glamour HH Small ★★★★★+LF

100% Echthaar/human hair
Größe/size ca. 52 cm / Haarlänge/hair length ca. 45 cm

4, 637, 8, 12/14, 120-R8, 120/26, Bernstein Mix

* Solange Vorrat reicht/While stocks last!

234/23+12



Diamond Euro HH ★★★★★

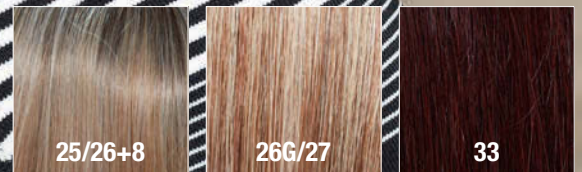
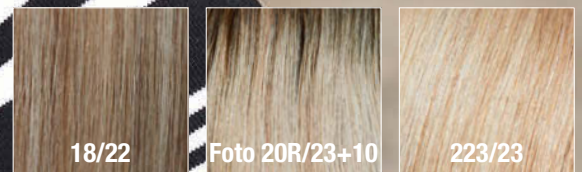
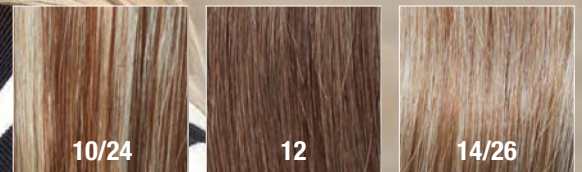
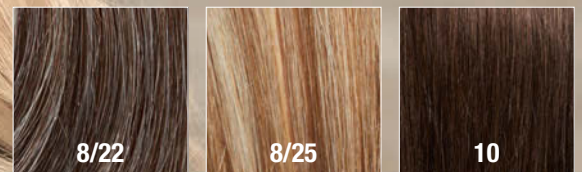
100% Echthaar/human hair / 100% Europäisches Haar
 Haarlänge/hair length ca. 30 cm

HUMAN HAIR CLASSIC COLLECTION

Echthaar

20R/23+10

Perücke mit E-Styler verändert
different Look with E-Styler



Michelle Lace HH ★★★★★+LF

100% Echthaar/human hair / Größe/size ca. 54 cm / Haarlänge/hair length ca. 40 cm
Standard Dichte 130%/standard density 130%

1B*, 4, 6, 8, 8/6/27, 8/22, 8/25, 10*, 12, 14/26, 18/22, **20R/23+10**, 223/23,
25/26+8, 26G/27, 33

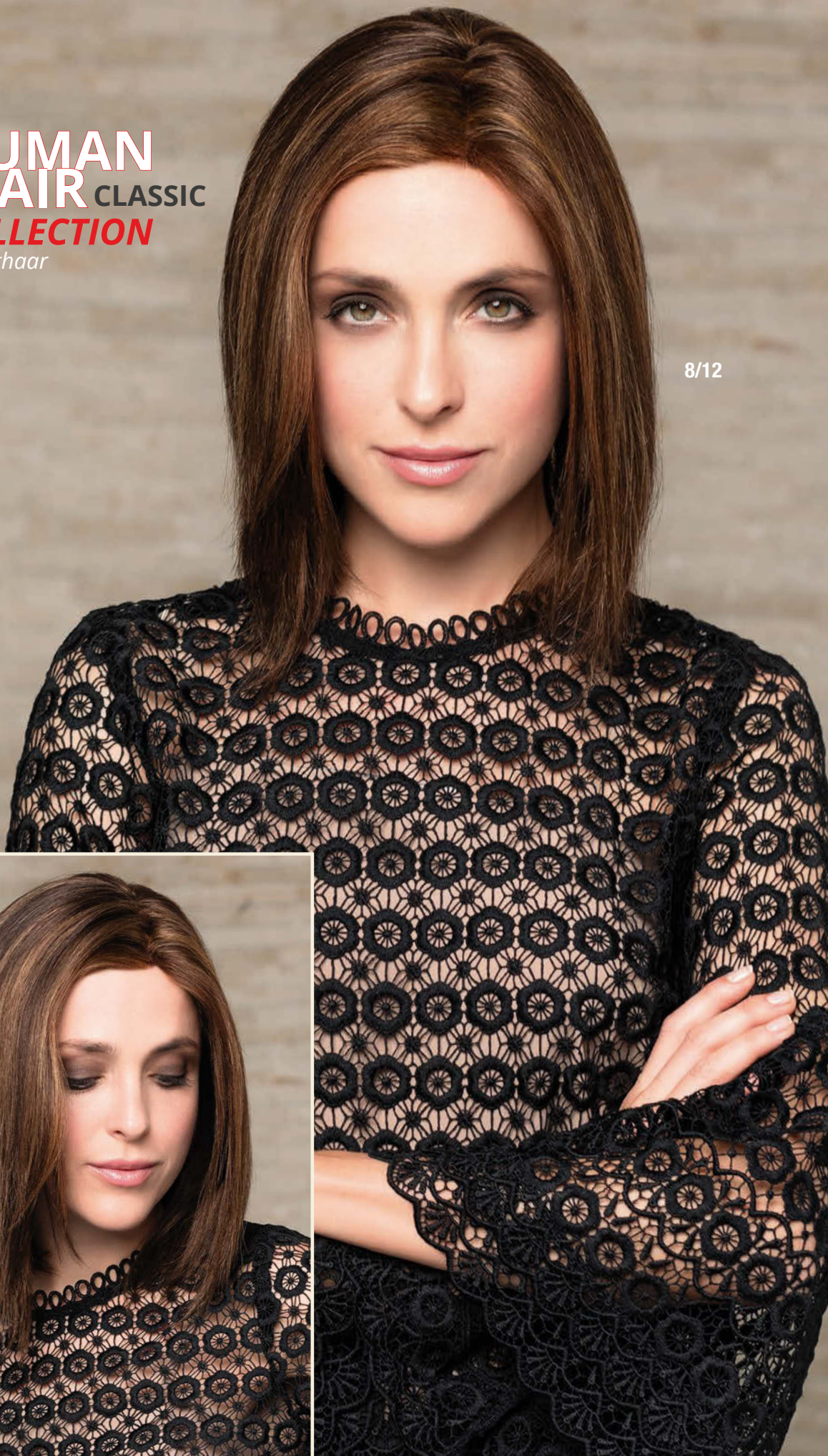
Hollywood Lace HH ★★★★★+LF

100% Echthaar/human hair / Größe/size ca. 56 cm / Haarlänge/hair length ca. 50 cm
Standard Dichte 130%/standard density 130%

1B, 4, 6, 8, 8/6/27, 10, 10/24, 12*, 18/22, 20R/23+10, 25/26+8, 26/27, 33

* Solange Vorrat reicht/While stocks last!

HUMAN HAIR CLASSIC COLLECTION
Echthaar



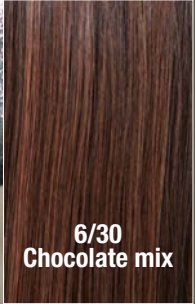
8/12



Venus Lace HH ★★★★★+LF

100% Echthaar/human hair / Haarlänge/hair length ca. 30 cm

6



Exclusiv Light Long HH ★★★★★

100% Echthaar/human hair / Haarlänge/hair length ca. 60 cm

* Solange Vorrat reicht/While stocks last!

30F27+4



Fox HH Mono Lace Deluxe ★★★★★ +LF

100% Echthaar/human hair

Größe/size ca. 54-55cm / Haarlänge/hair length ca. 35 cm gestuft/layered

HUMAN HAIR CLASSIC COLLECTION

Echthaar

8/6/27



Nina HH Lace ★★★★★+LF

100% Echthaar/human hair
Größe/size ca. 53-54 cm / Haarlänge/hair length ca. 15 cm
gestuft/layered

HUMAN HAIR CLASSIC COLLECTION

Echthaar

15/26

1B

L4

L6

637T

L8

L831

10/16/27+10

L12

14/26L+12

Foto 15/26

16/24L+23

22/23/26+16
Swedish Blond
Root

25/24+12

30F27+4

Sympathy HH Mono Lace Deluxe ★★★★★ +LF

100% Echthaar/human hair / Größe/size ca. 53 cm
Haarlänge/hair length ca. 50 cm gestuft/layered

1B*, L4, L6, 637T, L831, 10/16/27+10*, 14/26L+12, 15/26, 25/24+12, 30F27+4

Sympathy HH Mono Lace Small Deluxe ★★★★★ +LF

100% Echthaar/human hair / Größe/size ca. 52-53 cm
Haarlänge/hair length ca. 50 cm gestuft/layered

L4, L6, L8, L12, 14/26L+12, 15/26, 16/24L+23

Sympathy HH Mono Lace Large Deluxe ★★★★★ +LF

100% Echthaar/human hair / Größe/size ca. 58 cm
Haarlänge/hair length ca. 50 cm gestuft/layered

1B*, L4, L6, 637T*, L831, 10/16/27+10, 14/26L+12, 22/23/26+16, 25/24+12, 30F27+4

Root27/120



1B



4



6*



8/26



Root12/14



Root12/14/24-R6



Root14/25



Foto Root27/120



Root30/32*



32



West HH Lace ★★★★★+LF

100% Echthaar/human hair
Größe/size ca. 54 cm / Haarlänge/hair length ca. 55 cm

* Solange Vorrat reicht / while stocks last

30F27+4



Pauline HH Mono Lace ★★★★★ +LF

100% Echthaar/human hair
 Größe/size ca. 53-54cm / Haarlänge/hair length ca. 50 cm gestuft/layered

HUMAN HAIR CLASSIC COLLECTION

Echthaar

L6

1B

L4

Foto L6

637T

L831

8/6/27

10/16/27+10

15/26

16/24L+23

25/24+12

L130+8

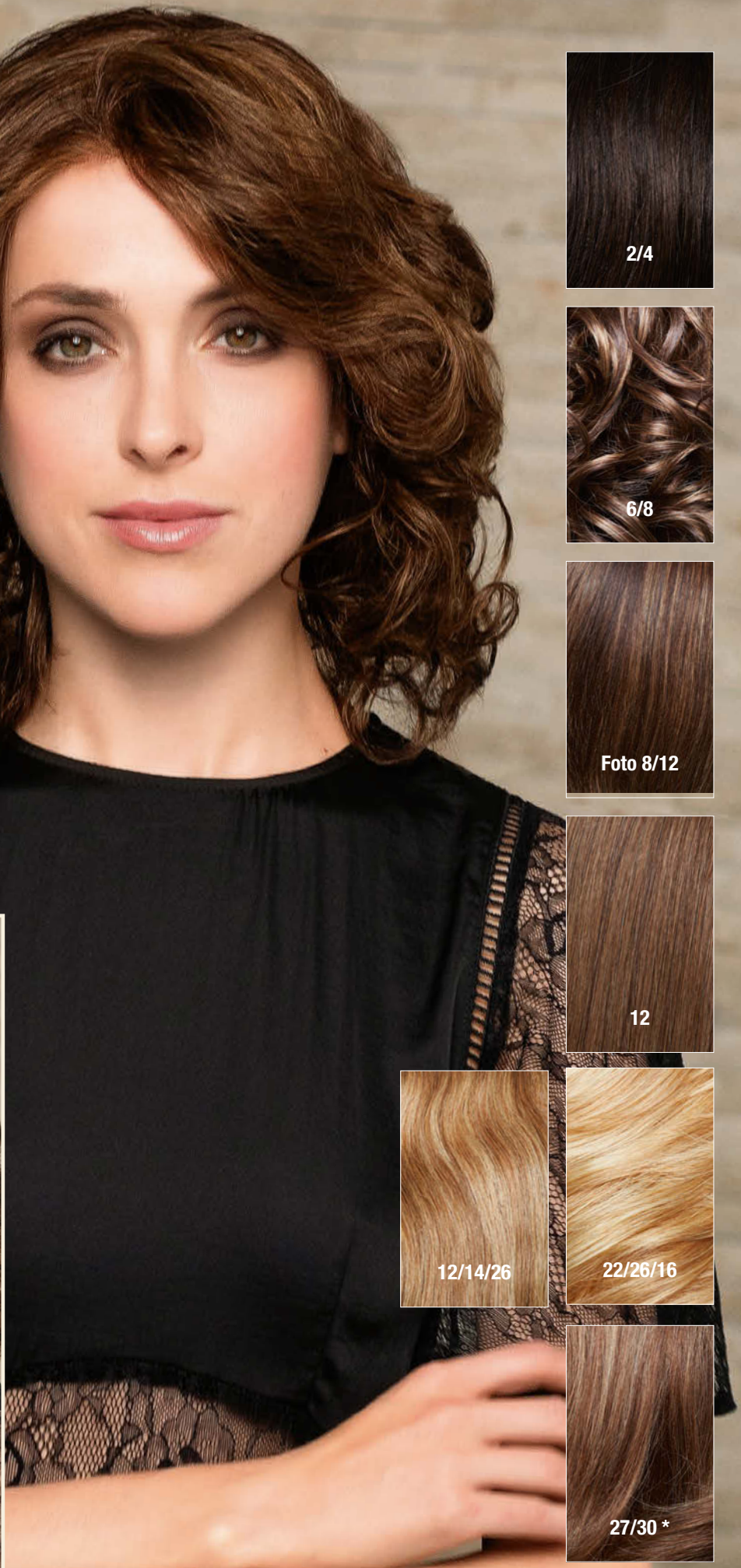
Power HH Lace ★★★+LF

100% Echthaar/human hair

Größe/size ca. 53-54 cm / Haarlänge/hair length ca. 55 cm
gestuft/layered

HUMAN HAIR CLASSIC COLLECTION
Echthaar

8/12



Magic Lace HH ★★★★★+LF

100% Echthaar/human hair / Haarlänge/hair length ca. 40 cm

* Solange Vorrat reicht/While stocks last!

15/26+8



Tiffany HH Lace ★★★★★+LF

100% Echthaar/human hair / Größe/size ca. 54 cm
 Haarlänge/hair length ca. 10-12 cm gestuft/layered





Crème Shampoo für Echthaar **Crema Shampoo Human Hair**

DE

Crème Shampoo für Echthaar:
Mit Arganöl + Perlglanz, silikon- und parabenfrei für Extensions und Echthaar / 200 ml

GB

crème shampoo:
with argan oil + pearlescent - free of silicone and paraben for human hair / 200 ml

FR

Shampooing pour cheveux naturels:
Avec huile d'argan et effet nacré, sans silicones et sans parabènes, pour cheveux naturels / 200 ml

IT

Crema Shampoo/capelli veri:
con olio di argan + perlescente, senza siliconi e paraben per extension e capelli veri / 200 ml

ES

Champu-crema para cabello natural:
Con Aceite de Argán, queratina, proteínas de seda, siliconas-nutrientes y libre de parabenos para extensiones y cabello natural / 200 ml



Haarmaske **Hair Mask**

DE

Haarmaske:
mit Arganöl und Keratin für Extensions und Echthaar / 200 ml

GB

hair mask:
with argan oil and keratin for extensions and human hair / 200 ml

FR

Masque capillaire:
Avec huile d'argan et créatine pour extensions et cheveux naturels / 200 ml

IT

Maschera:
con olio di argan e cheratina per extension e capello vero / 200 ml

ES

Mascarilla cabello natural:
con aceite de Argán + proteínas de seda, siliconas - nutrientes y libre de parabenos para extensiones y cabello natural / 200 ml



Sprühbalsam **2 in 1**

Spray-Balm 2 in 1

DE

Sprühbalsam 2 in 1:
Pflege für Echthaar, Extensions, Kunsthaar und Techno-Faser / 200 ml

GB

Two in one:
hair care for human hair, extensions, synthetic fiber and techno fiber / 200 ml

FR

Baume vaporisant 2 in 1:
Produit de soin pour cheveux naturels, extensions, fibres de systhèse et fibres techno / 200 ml

IT

Two in one
per capelli veri e sintetici, extension e fibra techno / 200 ml

ES

Bálsamo-spray 2 en 1: bifásico
Cuidado para el cabello natural, extensiones, fibra y Fibra Téch (High Tech) / 200 ml



Maroccanöl **Maroccan Oil**

DE

Maroccanöl:
Mit Arganöl. Spitzenfluid für trockene Haarspitzen / 50 ml

GB

Maroccan Oil:
With argan oil - fluid for dry tips / 50 ml

FR

Maroccanöl:
Avec huile d'argan. Soin traitant anti-sécheresse pour pointes de cheveux / 50 ml

IT

Maroccanoil
con olio di Argan. Fluido per punte dei capelli secche / 50ml

ES

Moroccanoil:
Con aceite de argán. Fluido especial para las puntas del cabello seco / 50 ml



Absolute Repair **Absolute Repair**

DE

Absolute Repair:
Intensive Haarkur mit pflegender Milchsäure / 200 ml

GB

Absolute Repair:
Intensive deep conditioner with nourishing hydroxypropionic acid / 200 ml

FR

Absolute Repair:
Cure intensive avec de l'acide lactique traitant / 200 ml

IT

Absolute Repair:
cura intensiva con acido lattico / 200 ml

ES

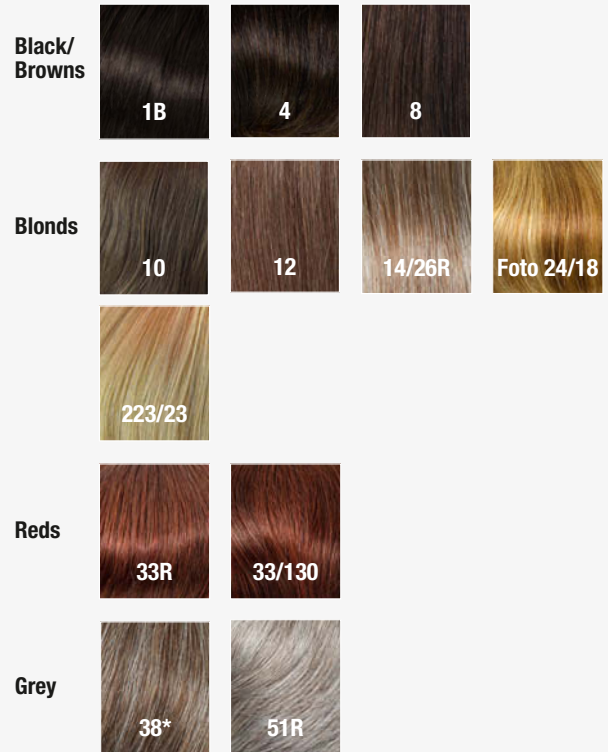
Absolut Repair:
Tratamiento reparador intensivo capilar con ácido láctico nutritivo / 200 ml



Solution C Echthaar (Mono)

100% Echthaar/human hair

Größe/size: ca. 19 x 18 cm • Haarlänge/hair length: ca. 35 cm



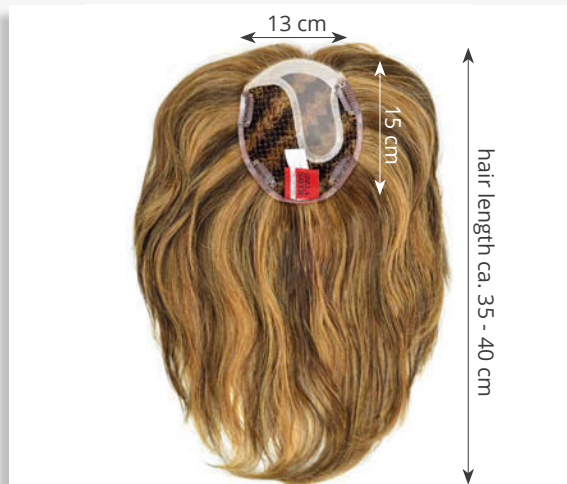
Integration Large HH

(ab/from November 2018)

100% Echthaar/human hair

Größe/size: ca. 16 x 19 cm

Haarlänge/hair length: ca. 35-40 cm



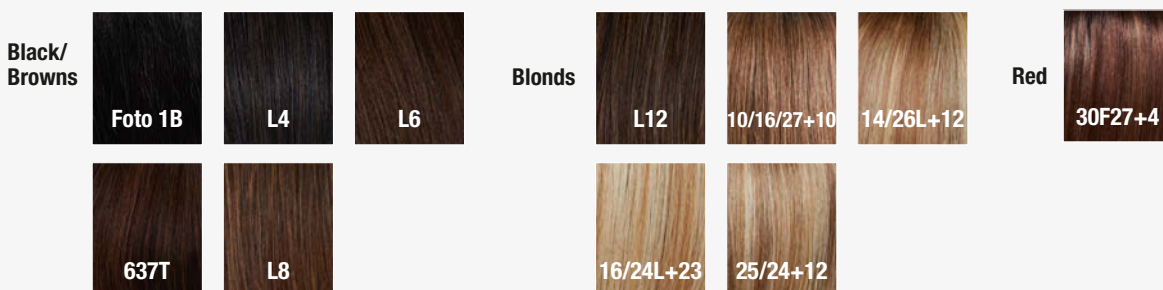
New Integration HH

(ab/from November 2018)

100% Echthaar/human hair

Größe/size: ca. 13 x 15 cm

Haarlänge/hair length: ca. 35-40 cm



bei Grey Colors nicht 100% Human Hair



Magic Top C Echthaar (Mono)
100% Echthaar/human hair
Größe/size: ca. 14 x 13 cm • Haarlänge/hair length: ca. 45 cm

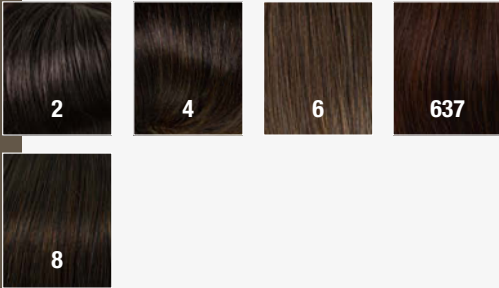
Browns: 2, 4, 6, 637, 8
Blonds: 12, 14/26, 263
Red: 33/32C



Magic Top B Echthaar ****
100% Echthaar/human hair
Größe/size: ca. 17 x 15 cm
Haarlänge/hair length: ca. 30 - 35 cm

Browns: 2, 4, 8
Blonds: 24/18T, 263*
Red: 33/32C

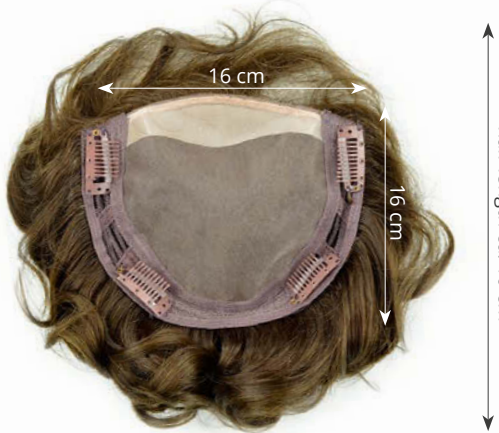
Browns



Blonds

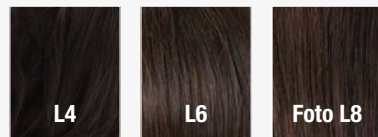


Red

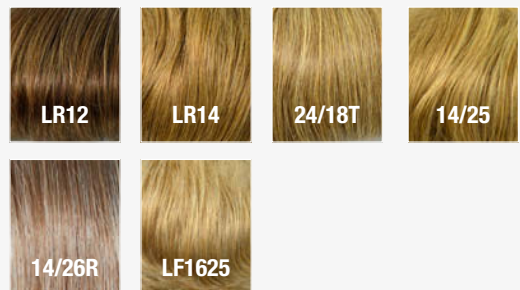


Top Filler Perfection Mono Echthaar ****
100% Echthaar/human hair
Größe/size: ca. 16 x 16 cm • Haarlänge/hair length: ca. 10 cm

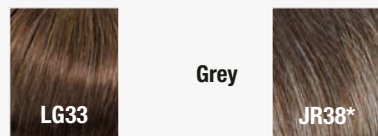
Browns

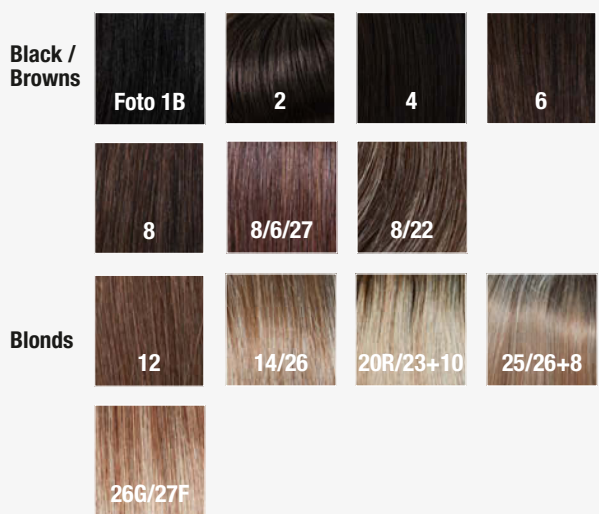
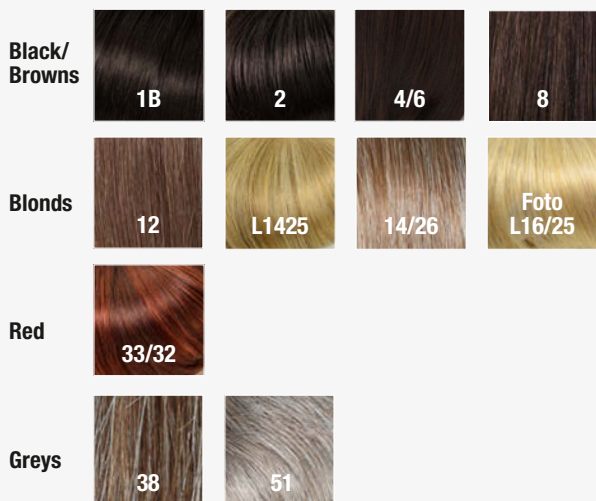
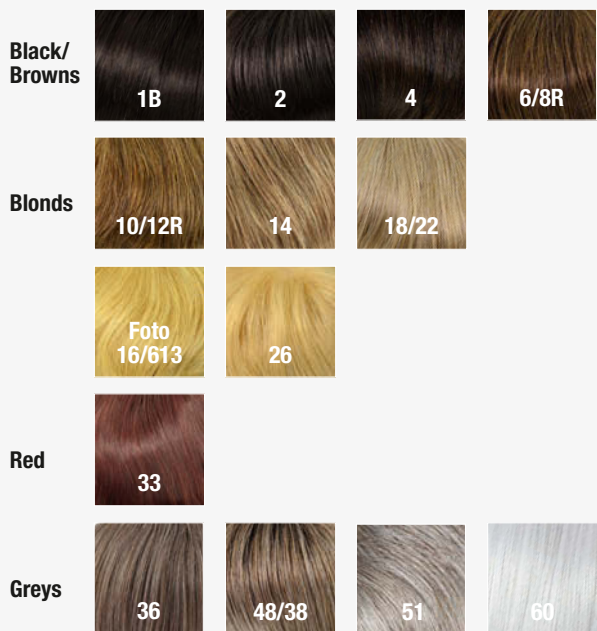
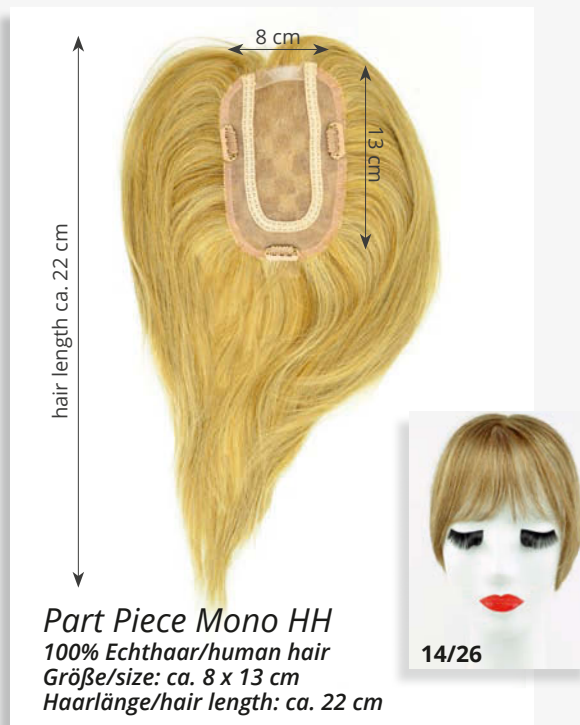


Blonds



Red





bei Grey Colors nicht 100% Human Hair



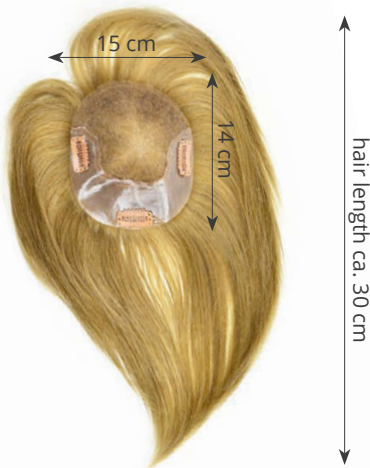
Style 162 H Echthaar (Mono)
100% Echthaar/human hair
Größe/size: ca. 12 x 12,5 cm
Haarlänge/hair length: ca. 30 – 35 cm

Black/Browns: 1B, 4, 6, 637, 8/26
Blonds: Bernstein rooted, 12/14, 120/26, 120- Rooted8, Rooted 8-25, 22* Red: 30/32*



Top Filler Delia Mono Echthaar (Mono)
100% Echthaar/human hair
Größe/size: ca. 14 x 18 cm
Haarlänge/hair length: ca. 40 – 45 cm

Black/Browns: 1B, 4, 6, 637, 8/26
Blonds: Bernstein rooted, 12/14, 27/14, 120/26, 120- Rooted8, Rooted 8-25, 22 Red: 30/32



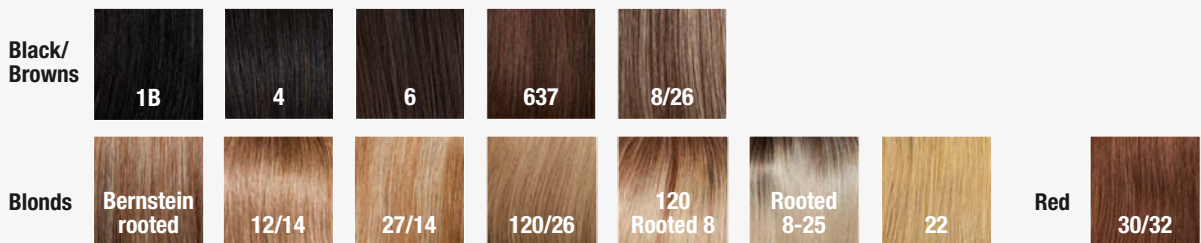
Magic Top Lace Echthaar (Mono +LF)
100% Echthaar/human hair
Größe/size: ca. 15 x 14 cm
Haarlänge/hair length: ca. 30 cm

Browns: 4, 6, 637, 8/26
Blonds: 12/14, 27/14*, 120/26, 22



Integration Light Echthaar
100% Echthaar/human hair
Größe/size: ca. 17 x 20 cm, feines Wabenteil/fine comb piece
Haarlänge/hair length: ca. 35 cm

Browns: 4, 6, 637, 8/26
Blonds: Bernstein rooted, 120/26, 120-Rooted8, Rooted 8-25, 22





Remy Filler Light Long
 100% Remy Human Hair -
 Lace-tulle with silicon strips
 Größe/size: ca. 15,5 x 15 cm
 Haarlänge / hair length: ca. 45 - 50 cm

Black/Browns: 1B, 4, 6
 Blonds: 12/14-Rooted 8, Bernstein mix,
120-Rooted 8, Rooted 8-25, 22
 Red: 30/32-Rooted 6



Remy Filler Long
 100% Remy Human Hair -
 Mono with fine wefts
 Größe/size: ca. 15 x 13 cm
 Haarlänge / hair length: ca. 45 - 50 cm

Black/Browns: 1B, 4, 6
 Blonds: 12/14-Rooted 8, Bernstein mix,
 120/26*, **120-Rooted 8**, Rooted 8-25
 Red: 30/32-Rooted 6

Black/ Browns		
Blonds		
Red		



Extra Long HH Filler
 100% Echthaar/human hair
 Größe/size: ca. 18 x 17,50 cm
 Haarlänge/hair length: back ca. 45 cm
 Pony/fringe ca. 20 cm



Luxery Top Filler Lace *+LF**
 100% Echthaar/human hair
 Größe/size: ca. 17 x 19 cm
 Haarlänge/hair length: ca. 40 cm
 gestuft/layered, feines Wabenteil/fine
 comb piece

Black/ Browns				
Blonds				
Blonds		Red		

Black/ Browns					
Browns					
Red					



Tape Extension with Glued Clips

(100% finest
Human Hair)

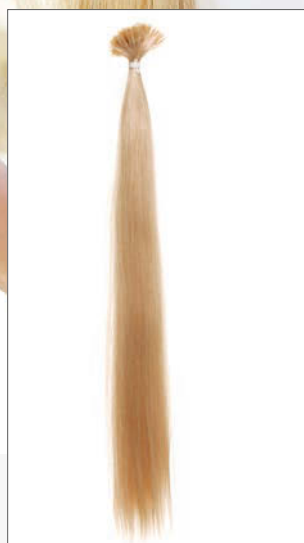
Länge/length:
ca. 50 cm
(8tlg. 1x ca. 20 cm,
1x ca. 17,5 cm,
2x ca. 15 cm, 4x
ca.3,2 cm)
2, 4, 8*, 14/26*,
16/25, 22, 22/60, 60



Lace Clip In Weft

(100% finest Human Hair)

Länge/length: ca. 50 cm
(8tlg. 1x ca. 20 cm, 1x ca. 17,5 cm,
2x ca. 15 cm, 4x ca. 3,2 cm)
1B*, 2, 4, 6, 8*, 16/25, 22, 613, 22/60,
60

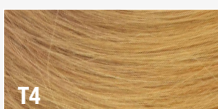
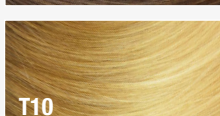
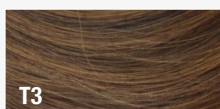
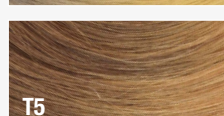
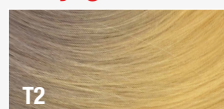


10er Set EH Strähnen

(100% Human Hair)

Haarlänge/hair length: ca. 55 cm
1, 1B*, 1B/Blue*, 1B/Purple*, 2, 4,
6, 8, 18, 22, 22/60, 613, 60,
Ash/Purple*, Yellow
Balayage Farben:
T2, T3, T4, T5, T10

Balayage Farben



Echthaartresse Glatt

Breite/width: ca. 120 cm

45 cm: 1, 2, 4, 8, 12, 22, 24, 613
55 cm: 1, 1B, 2, 4, 6, 8, 12, 22, 24, 234,
613, 27, 60

55 cm Balayage Farben:
T2, T3, T4, T5, T10



Weft Easy HH

Haarlänge/hair length: 45 cm
Echthaartresse/human hair weft
1, 1B, 2, 4, 6, 22

Weft Easy Long HH

Haarlänge/hair length: 55 cm
Echthaartresse/human hair weft
1, 1B, 2, 4, 6, 8, 22, 24, 613



Weft Easy Wavy HH

Länge/length: ca. 55 cm
Echthaartresse/human hair weft
1B, 2, 4, 6, 8, 613



New Put In Curly Echthaar

(Solange Vorrat reicht/While stocks last)

(3tlg., 1 x 30 cm/22 cm/15 cm)

Länge/length: ca. 30 cm

14/26R, 18/22, 24/18T, 234, 223/23C, 33/32C



Farbe: 613



Triple Weft Clip

(2er Set) 100% Echthaar / 100% Human Hair

Länge/length: 60 - 65 cm

Breite/wide: 1 x 20 cm (5 Clipse),

1 x 15 cm (4 Clipse)

1, 1B, N1/135/137*, 2, 4, 6, 8/30/29*, 12, 14/26, 16/25, 22/60, 25*, 613, 22/60, LG30, LG130*, 33*, 33/fire/131*, 33/32*, dark beaujolais*, 60

Balayage Farben: T2, T3, T4, T5, T10



Tokyo Straight Echthaar

(3tlg. 1 x 23 cm/18 cm/12 cm)

Länge/length: 50 cm

1, 2, 4, 6, 8, 10, 10/20, 16, 16/25, 613, 22/60, 60

Balayage Farben:

T2, T3, T4, T5, T10

New Put In Straight EH/HH

(3tlg. 1 x 30 cm/22 cm/15 cm)

(100% Human Hair)

Länge/length: ca. 40 cm

4/6, 8R, 12R, 14/26R, 18/22, 24/18T, 234, 223/23C, 23R, 33/32C



Farbe: 14/26HL

HBT Long Echthaar

(100% Human Hair)

Länge/length: ca. 55 cm, 5 Clips

Breite/wide: 25 cm

1B, 2, 4, 6, R829S, LG10/20*, LG25, 33/32



1B



4



6



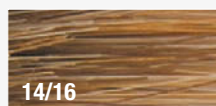
637T



8/30



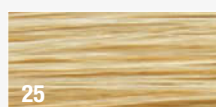
10



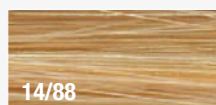
14/16



14/25



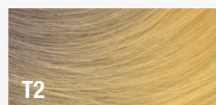
25



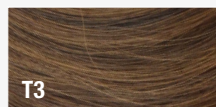
14/88



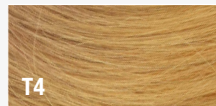
L22



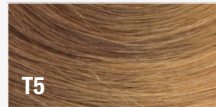
T2



T3



T4



T5



T10

Balayage Farben only for
Tokyo Straight Echthaar and Triple Weft Clip

* Solange Vorrat reicht/While stocks last!



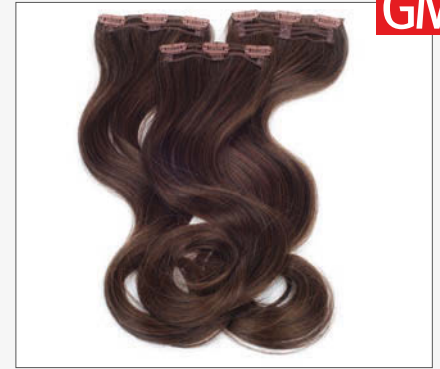
Pony 166 Long Echthaar

1, L2, L4, L6, L830, LG1020, L14/16, 1426HL, LF1625, L22, LG25



Simply E Echthaar/HH

1, 2/4, 4/6, 637T, 14/26R, 24/18T, 223/23C, 23R, 33/32C



HBT Deluxe EH Set

100% Human Hair
Haarlänge/hair length: ca. 50 cm
Breite/width: ca 10 cm je Tresse
Set: 3 Tressen mit je 3 Clips
Straight: 1B*, 2/4, **4/6**, 24/18T, 14/26, 14/88H, 234*, 263, 18/22*, 33/32C **Wavy:** 1B*, 2/4, 4/6, 8, 12*, 24/18T, 14/26, 263*, 18/22, 33/32C



Maya 3er Clip

100% finest Indian Human Hair, 3 Clips
Haarlänge/ hair length: ca. 40 cm
Breite/width: ca. 12 cm
1B, 2, **4**, 6, 8/12* 12, 24, 613, 27, 27/613, 30*



Maya 1er Clip

100% finest Indian Human Hair, 1 Clip
Haarlänge/ hair length: ca. 40 cm
1B, 2, 4, 6, 8*, 8/12*, 12, 14*, 24, **613**, 27, 27/613



Single HBT EH/HH

Haarlänge/hair length: ca. 45 cm
Breite/width: ca. 15 cm
Straight: 1B, 2/4*, 8, 18/22*, 234, 263
Wavy: 1B, 2/4*, 4/6*, 8, 10*, 14/26, 18/22, 24/18*, 234*, 263, 23R*, 33*, 33/32C*



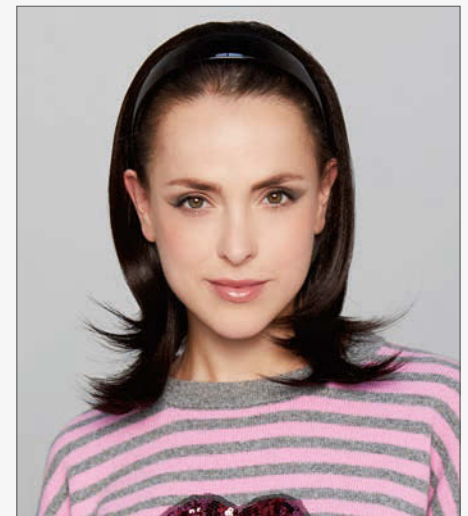
Spring B Echthaar/HH

Haarlänge/hair length: ca. 40 cm
1B, L6, L8, LF1625, **L22**



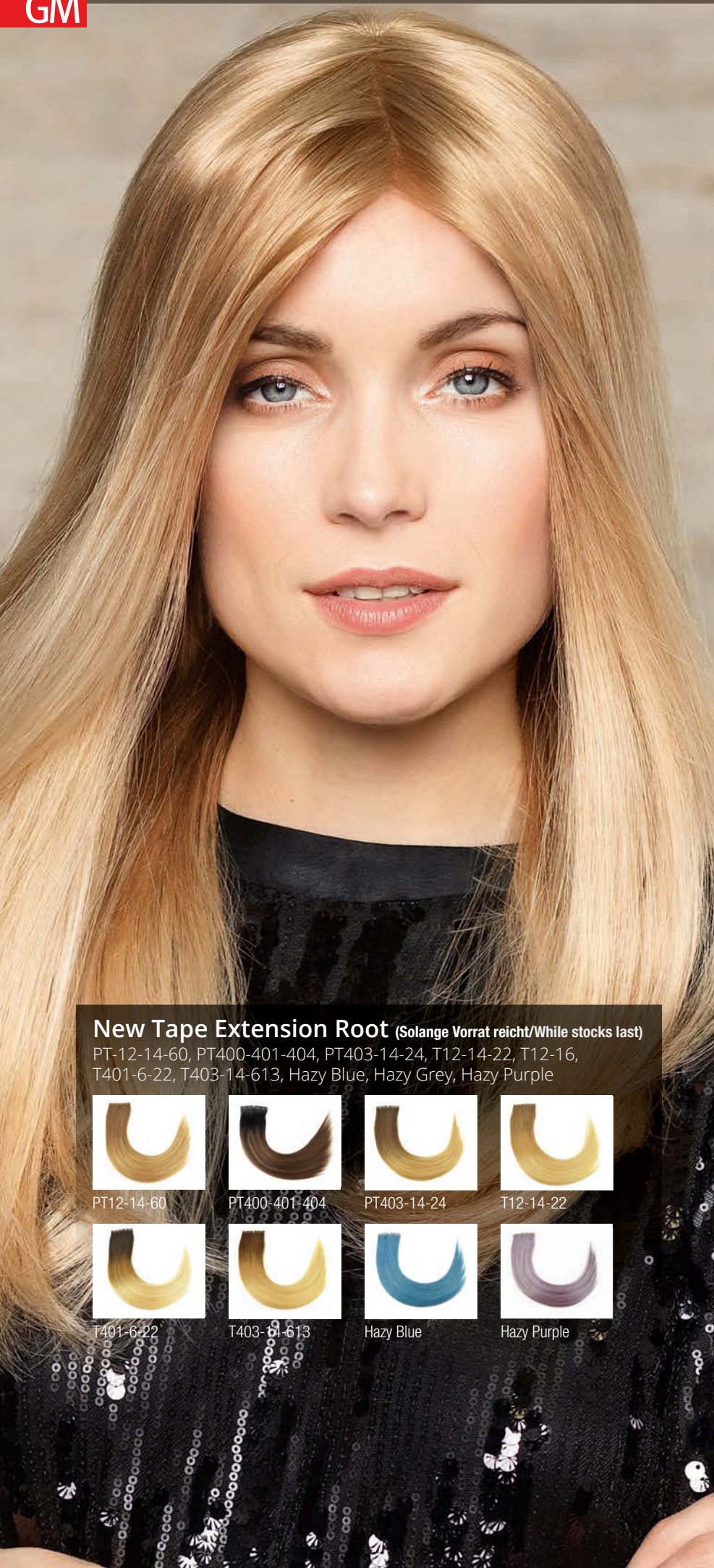
Fine 3 Weft

(Solange Vorrat reicht/While stocks last)
Hauchdünne Tresse/wafer-thin weft
100% finest Human Hair
Haarlänge/hair length: ca. 40 cm
Breite/width: ca. 10 cm, 3 Clips
1B, 2/4, 4/6, 9/14, 12, 234, 223/23C, **613**, 33/32C



Bacardi HH

Länge/length: ca. 50 cm
4/27, **L830**, L1416, 234, L22, 25/26, 33/131



New Tape Extension, 10er Set

(Solange Vorrat reicht/While stocks last)

(100% Human Hair) Länge/length: ca. 50 cm
1, 1B, 2, 3, 5, 6/24, 7, 9, 10, 24, 25, 28/613, 101



New PU Extension, 10er Set

(Solange Vorrat reicht/While stocks last)

(100% Human Hair) Länge/length: ca. 50 cm
1, 1B, 2, 3, 5, 6, 6/24, 7, 9, 10, 7/12/101, 24, 25, 28/613, **613**, 101, 33

New Tape Extension Root (Solange Vorrat reicht/While stocks last)

PT-12-14-60, PT400-401-404, PT403-14-24, T12-14-22, T12-16, T401-6-22, T403-14-613, Hazy Blue, Hazy Grey, Hazy Purple



PT-12-14-60



PT400-401-404



PT403-14-24



T12-14-22



T401-6-22



T403-14-613



Hazy Blue



Hazy Purple



* Solange Vorrat reicht/While stocks last!

DE

Für die Fotos unseres Katalogs werden die Perücken oftmals mit verschiedenen Stylingprodukten bearbeitet. Das demonstriert, wie wandelbar sie sein können. In diesem Sinne möchten wir Ihnen unseren neuen Allrounder vorstellen, der ab sofort in zwei Ausführungen bei uns erhältlich ist: Den Ikoo E-Styler Jet und den Ikoo E-Styler Pro.

Der Ikoo E-Styler Jet ist eine Kombination aus Haarbürste und Glätteisen, dadurch ist die Handhabung sehr einfach gehalten. Die 29 Keramikplättchen erhitzen sich schnell und das Haar kann schonend in fünf verschiedenen Temperaturstufen zwischen 150 °C und 230 °C bearbeitet werden. Durch die spezielle Ionenfunktion wird das Zweithaar beim Glätten nicht statisch aufgeladen, somit erhält es eine seidige, glatte Oberfläche und glänzt schöner denn je. Beim Bürsten wird das Haar nicht zusammengepresst sondern schonend geglättet, somit werden ungewünschte Knickstellen vermieden. Überzeugen Sie sich selbst!

Mit dem Ikoo E-Styler Pro erhalten Sie einen 3-in-1 Allrounder. Bürste, Glätteisen und Lockenstab in einem. Somit steht dieses Modell dem Ikoo E-Styler Jet in nichts nach. Durch den Zusatz des Lockenstabes können Sie mit diesem Gerät ihr Zweithaar flexibel stylen, ob glatt oder voluminösen Wellen. Einfach die seitlichen Platten per Knopfdruck aktivieren und durch einfache Drehbewegungen wunderschöne Locken und Wellen in Ihr Haar zaubern. Durch das Zusammenspiel von Hitze, Bürste und der speziell versetzten Anordnung der Keramikplättchen erhalten Sie das optimale Ergebnis für Ihr Zweithaar. Die 42 Keramikplatten erhitzen sich schnell und das Haar kann schonend in fünf Temperaturstufen zwischen 150 °C und 230 °C bearbeitet werden. Hinzu kommt, dass dieses Gerät eine eingebaute Ionenfunktion besitzt. Diese verhindert, dass sich die Haare nach der Behandlung statisch aufladen und verleiht dem Haar einen seidigen Glanz.

FR

Les chevelures présentées dans nos catalogues on souvent été retravaillées avec divers produits de styling afin de vous montrer leurs possibilités d'adaptation. C'est dans cette optique que nous vous présentons aujourd'hui notre dernier produit tous talents en deux versions : l'Ikoo E Styler et l'Ikoo E-Styler-Pro.

C'est une combinaison de brosse à cheveux et de fer à lisser, et son utilisation est très simple. Ses 29 plaques en céramique atteignent très vite la température désirée à 5 niveaux entre 150 et 230 °. Equipé d'une fonction ionisation la chevelure ne se charge pas en électricité statique et on obtient un toucher soyeux lisse et brillant plus beau que jamais. Avec la brosse le cheveu n'est pas comprimé et on évite ainsi de faire des plis indésirables. Testez vous-même ! Avec l'Ikoo E Styler Pro vous avez un appareil 3 en 1 : brosse, fer à lisser et fer à friser. Avec cette fonction supplémentaire vous pouvez coiffer votre chevelure, la lisser comme lui faire des boucles volumineuses. Les plaques latérales doivent être activées et vous avez sur simple mouvement des ondulations ou des boucles dans la chevelure. Le résultat est parfait grâce à la mise au point de la disposition des plaques céramique, de la température et de la brosse. Ici vous avez 42 plaques en céramique, également 5 niveaux de température entre 150 et 230 ° et bien sûr la fonction ionisation. Vos possibilités sont quasi-illimitées !"

**E-Styler Jet****E-Styler Pro****IT**

Facciamo notare che i modelli presentati sul catalogo spesso vengono lavorati con vari utensili e prodotti, anche per mostrare quanto questi possano variare stile. Presentiamo quindi di seguito il nuovo e versatile Ikoo E-Styler, disponibile in due varianti:

Ikoo E-Styler Jet è una combinazione tra spazzola e piastra per capelli. Le 29 piastrine in ceramica si riscaldano in fretta e si può scegliere tra 5 livelli di temperatura tra i 150 e 230°C. Grazie alla speciale funzione a ioni, le parrucche non si caricano elettrostaticamente e mantengono così la naturale lucentezza e morbidezza. Usando questa spazzola si evitano pieghe nel capello.

Ikoo E-Styler Pro è una combinazione tra spazzola, piastra e arricciacapelli in un solo prodotto. Basta attivare le piastrine laterali per avere capelli mossi o ondulati. Grazie alla combinazione di calore, spazzola e la disposizione sfalsata delle 42 piastrine in ceramica si ottengono risultati ottimali sulla parrucca. Le piastrine si riscaldano in fretta e si può scegliere tra 5 livelli di temperatura tra i 150 e 230°C. Inoltre, con la speciale funzione a ioni, le parrucche non si caricano elettrostaticamente e mantengono così la lucentezza e morbidezza naturale.

GB

Please be advised our wigs are often styled before the photo shooting for our catalog. We use a variety of styling products and tools to show how versatile human hair wigs can be. Speaking of it...

We would like to introduce our latest styling tools, now available at Gisela Mayer. Ikoo E-Styler Jet and Ikoo E-Styler Pro.

Ikoo E-Styler Jet combines brush and straightener into one tool with easy handling guarantee. 29 ceramic pads - 5 adjustable temperature levels between 150°C and 230°C - warm up fast and provide the perfect heat for every hair type. The ionic technology helps to give the hair a silky, shiny and satin-like finish. Unlike usual straighteners this tool doesn't compress, but gently smooths the hair. Convince yourselves!

Ikoo E-Style Pro the 3-in-1 tool - brush, straightener and curling tongs in one! This tool has the same functions and benefits as the Ikoo E-Styler Jet. But with the added curling device you can create sleek or voluminous wavy stylings. Just press a button to warm up the ceramic pads at the side and with some simple twists you'll conjure lovely curls and waves. The interaction of heat, brush and curling device will nourish the perfect result for your human hair wig or hairpiece. Infinite styling possibilities!

ES

Nos gustaría informarles que a menudo en las fotos de catálogo, los modelos se peinan con diferentes productos de diseño para mostrarle lo cambiantes que son. En este contexto, también le presentamos nuestro último producto todo terreno, que está disponible en dos versiones a partir de ahora. El Ikoo E-Styler Jet y el Ikoo E-Styler Pro.

El Ikoo E-Styler Jet es una combinación de cepillo para el cabello y alisador, por lo que su manejo es muy fácil. Las 29 baldosas cerámicas se calientan rápidamente y el pelo puede procesarse suavemente en cinco niveles de temperatura diferentes, entre 150 y 230 ° C. Debido a la función especial de iones, el cabello no está cargado estáticamente al alisar, por lo que obtiene una superficie sedosa y lisa y brilla más bella que nunca. Al cepillar, el cabello no se comprime, sino que se suaviza suavemente para evitar enredos indeseables. Conviértase!

Con el Ikoo E-Styler Pro obtienes un 3-en-1 Allrounder para todo. El Cepillo, alisador y rizador en uno. Por lo tanto, este modelo no es inferior al Ikoo E-Styler Jet. El rizador le permite modelar el cabello con flexibilidad, ya sea suave o en ondas voluminosas. Simplemente activa las placas laterales con solo tocar un botón y forma hermosos rizos y ondas en el cabello con simples movimientos de torsión. La combinación de calor, cepillo y la disposición especial de las baldosas de cerámica le da el mejor resultado posible para su segundo cabello. Las 42 placas de cerámica se calientan rápidamente y el pelo puede procesarse suavemente en cinco niveles de temperatura entre 150 y 230 ° C. Además, este dispositivo tiene una función iónica incorporada, esto evita que el cabello después del tratamiento se recargue estáticamente y le da al cabello un brillo sedoso. ¡Aquí no hay límites!

GM
GISELA
MAYER
HAIR COLLECTION

MH
MAYER
HAIR
HAIR COLLECTION



**HAIR
PHILOSOPHY**
BY
**GISELA
MAYER**

Kennen Sie alle unsere Kataloge? Do you know all our catalogues?
Connaissez-vous tous nos catalogues? Conoces todos los nuestros catalogos?
Conheces todos os nossos catálogos? Conoscete tutti in nostri cataloghi? Вы знаете уже все наши каталоги?